

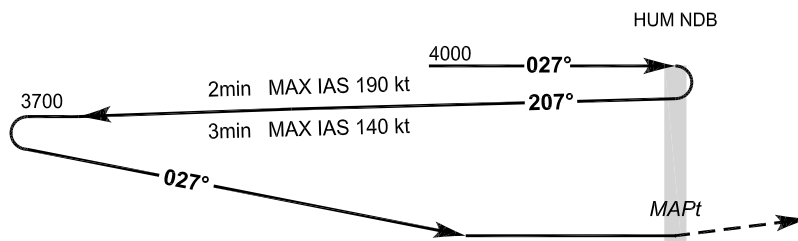
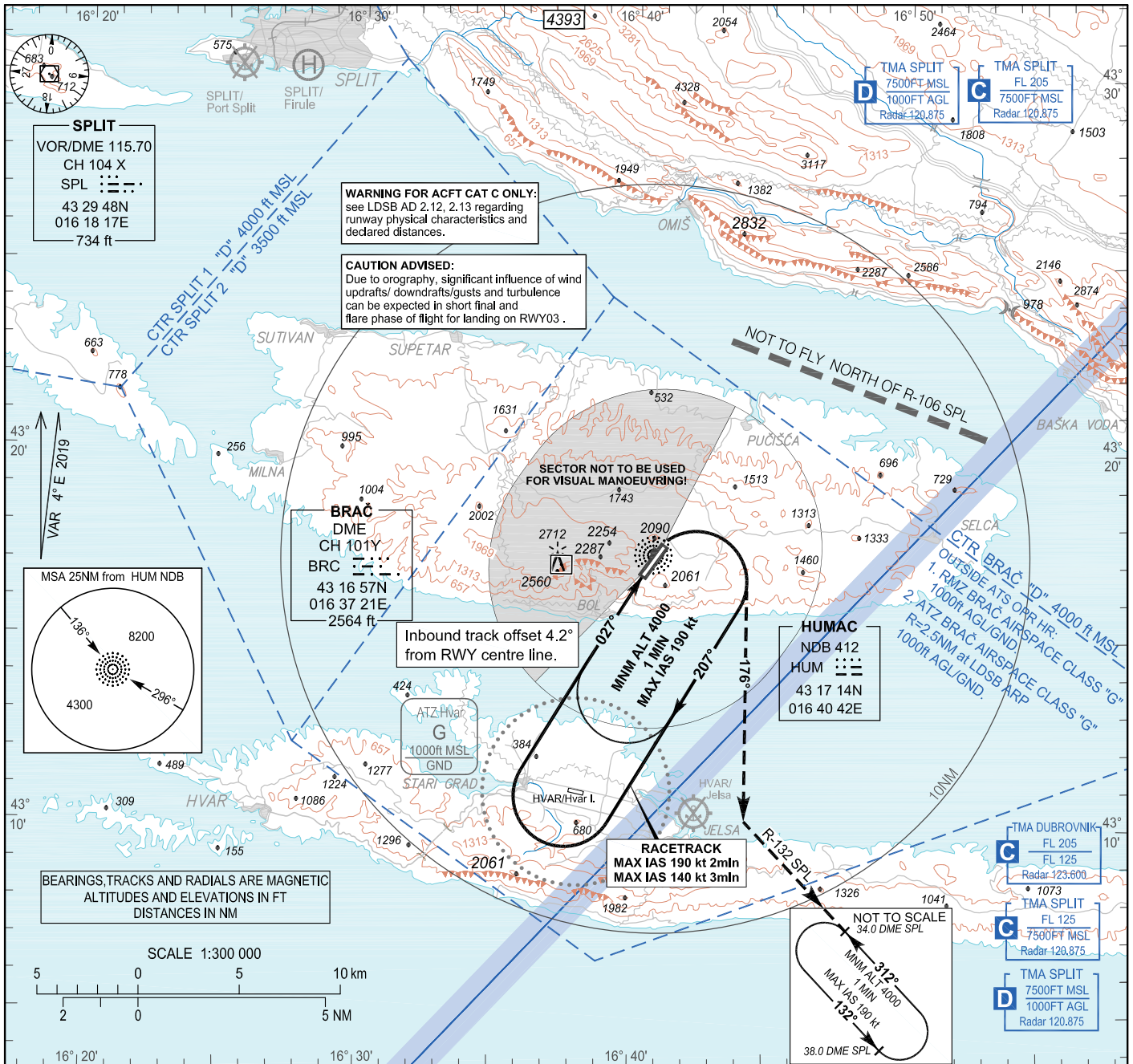
INSTRUMENT APPROACH
CHART-ICAO

AD ELEV 1781
HEIGHTS RELATED
TO AD ELEV 1781

SPLIT RADAR 120.875
BRAČ TOWER 118.025

BRAČ / Brač I. (LDSB)

NDB RWY 03



MISSED APPROACH:
At HUM NDB turn
RIGHT on track 176°,
intercept R-132 SPL
climbing to 34.0 DME SPL
at 4000 and hold.

THR ELEV 1779

NM to/from THR 03

OCA(H)	A	B	C
Straight - in Approach		2650 (870)	
Circling		2650 (870)	

Circling NW of aerodrome not allowed.
MAPt at HUM NDB.

WARNING FOR ACFT CAT C ONLY:
see LDSB AD 2.12, 2.13 regarding runway physical characteristics and declared distances.

CHANGE: RMZ Brač added; ATZ Brač added; Obstacles updated; Heliport Split/Firule added; Split/Resnik Water aerodrome removed; Editorial.

NDB RWY 03

AERONAUTICAL DATABASE REQUIREMENTS

Conventional procedure essential fixes/points

NDB RWY 03

Final approach descent angle:

-

Fix identification	Coordinates	True bearing or ARC distance providing track	True bearing or distance providing intersection
IAF (HUM NDB)	431713.88N 0164042.42E	-	-
MAPt (HUM NDB)	431713.88N 0164042.42E	-	-

CHANGE: RMZ Brač added; ATZ Brač added; Obstacles updated; Heliport Split/Firule added; Split/Resnik Water aerodrome removed; Editorial.