

WAAS CH 93620 W12A	APP CRS 123°	Rwy Idg TDZE Apt Elev	5001 2294 2296
--	------------------------	-----------------------------	---

RNAV (GPS) RWY 12

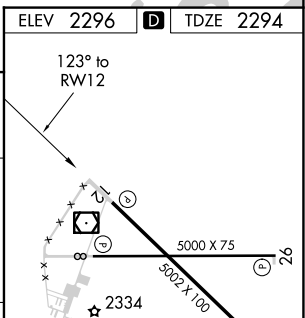
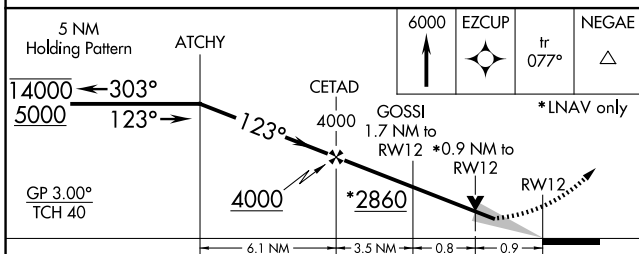
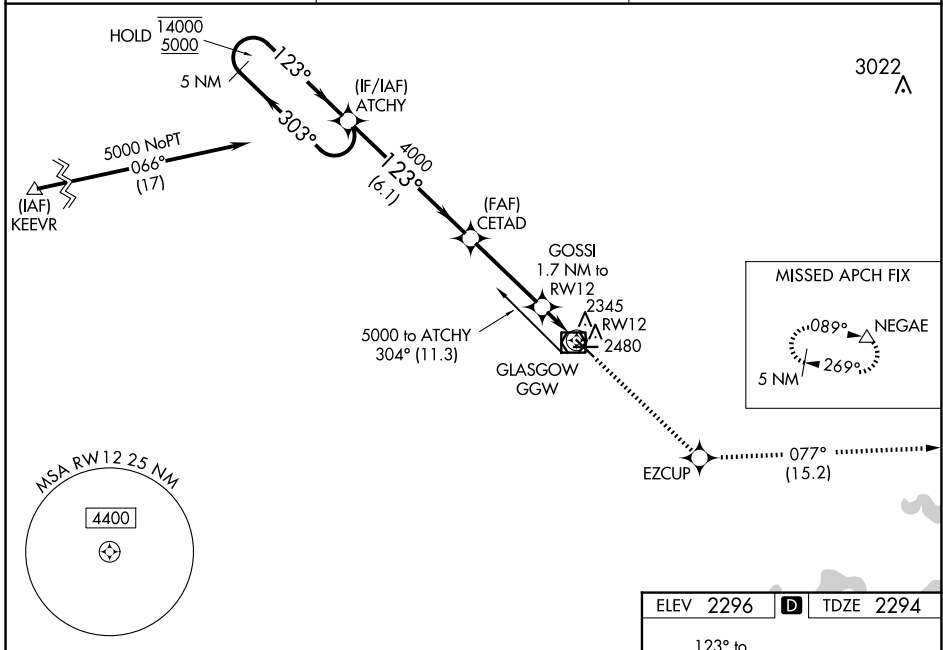
WOKAL FLD/GLASGOW-VALLEY COUNTY (GGW)

RNP APCH.

⚠ For uncompensated Baro-VNAV systems, LNAV-VNAV NA below -14°C or above 54°C. When local altimeter setting not received, use Wolf Point altimeter setting and increase LPV DA to 2685 feet and visibility all Cats ½ SM; Increase LNAV/VNAV DA to 2728 feet and visibility all Cats ½ SM; increase all MDAs 160 feet and LNAV Cats C/D and Circling Cat D visibility ½ SM, Circling Cat C ¼ SM. Baro-VNAV and VDP NA when using Wolf Point altimeter setting.

MISSED APPROACH: Climb to 6000 direct EZCUP and on track 077° to NEGAE and hold.

ASOS 135.175	SALT LAKE CENTER 126.85 305.2	UNICOM 122.8 (CTAF) 0
------------------------	---	---------------------------------



CATEGORY	A	B	C	D
LPV DA	2544-7/8		250 (300-7/8)	
LNAV/VNAV DA	2587-1		293 (300-1)	
LNAV MDA	2600-1	306 (400-1)	2600-7/8	306 (400-7/8)
CIRCLING	2780-1	484 (500-1)	2780-1½ 484 (500-1½)	2900-2 604 (700-2)

REIL Rwy 8, 12, 26 and 30 0

MIRL Rwy 8-26 and 12-30 0

NW-1, 20 MAR 2025 to 17 APR 2025

NW-1, 20 MAR 2025 to 17 APR 2025