

BOSSIER CITY, LOUISIANA

TACAN Y RWY 33

TACAN BAD Chan 105	APCH CRS 323°	Rwy ldg 11,758 THRE 161 Arprt Elev 165
------------------------------	-------------------------	---

[USAF]

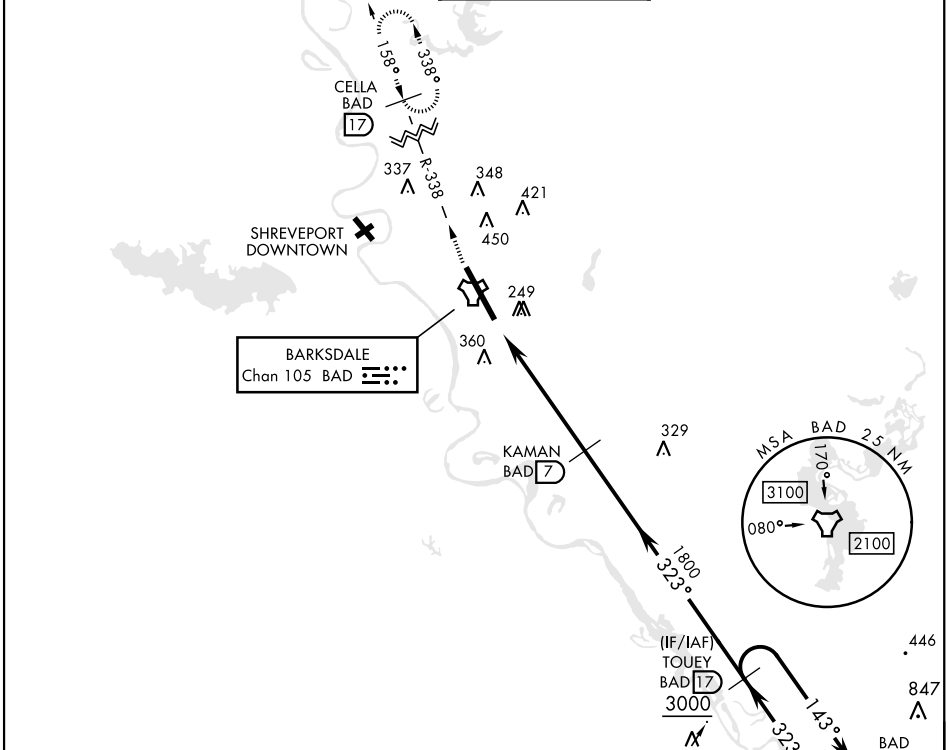
BARKSDALE AFB (KBAD)

* When ALS inop, increase CAT AB RVR to 55 and vis to 1 mile,
CAT CDE vis to 1 3/8 miles.
** Circling not authorized W of Rwy.

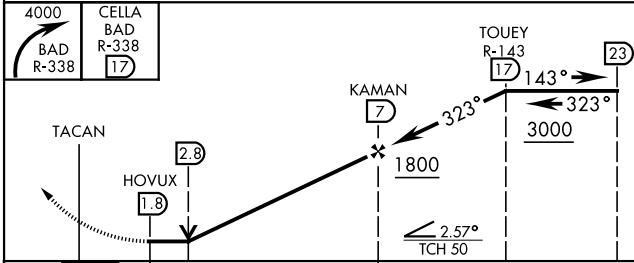


MISSED APPROACH: Climb to 4000 via
BAD R-338 direct CELLA and hold.

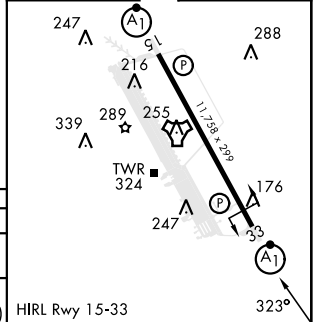
ATIS 307.025	SHREVEPORT APP CON 320°-152° 123.75 360.725 153°-319° 119.9 335.55	TOWER * 128.25 278.3	GND CON 121.8 253.5	ASR
------------------------	--	--------------------------------	-------------------------------	-----



EMERG SAFE ALT 100 NM 3300



ELEV	165	THRE	161
------	-----	------	-----



CATEGORY	A	B	C	D	E
S-33 *	640/24	479 (500-1/2)	640/50	479 (500-1)	
CIRCLING **	NOT AUTHORIZED		760-2 595 (600-2)	780-2 1/4 615 (700-2 1/4)	

HIRL Rwy 15-33

BOSSIER CITY, LOUISIANA

32° 30' N-93° 40' W

BARKSDALE AFB (KBAD)

Amdt 6 25JUN15

TACAN Y RWY 33

SC-4, 20 MAR 2025 to 17 APR 2025

SC-4, 20 MAR 2025 to 17 APR 2025