

WAAS CH <b>90509</b> W14A	APP CRS <b>144°</b>	Rwy ldg <b>13503</b> TDZE <b>1169</b> Apt Elev <b>1189</b>
---------------------------------	------------------------	--

# RNAV (GPS) Y RWY 14L

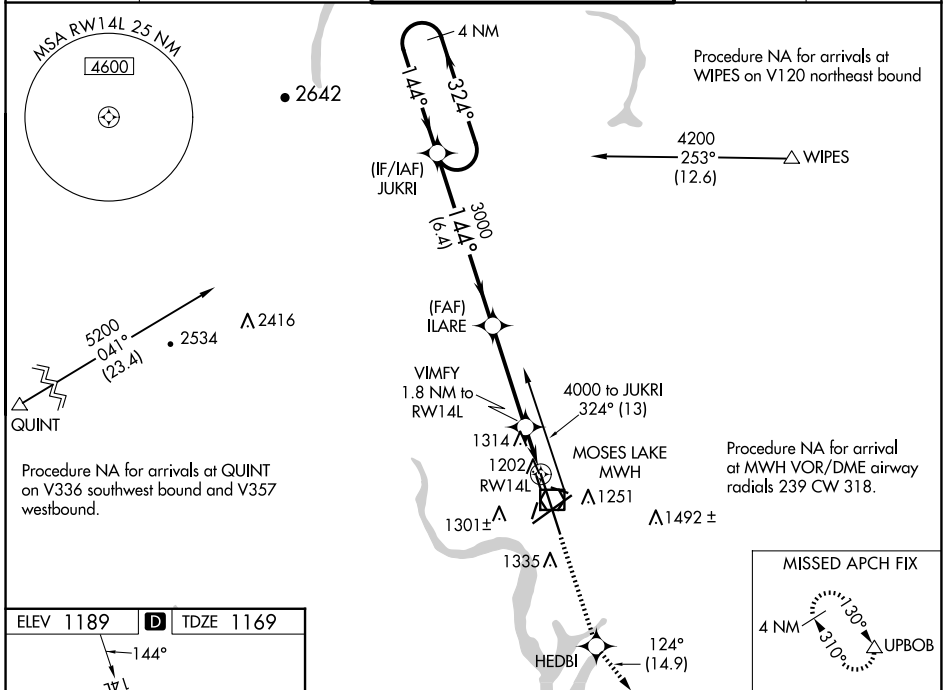
GRANT COUNTY INTL (MWH)

RNP APCH.

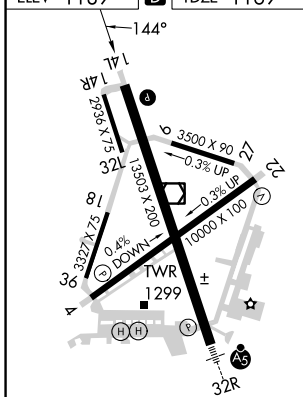
▼ For uncompensated Baro-VNAV systems, LNAV/VNAV NA below -17°C or above 36°C.  
 ▲ Baro-VNAV and VDP NA when using Ephrata altimeter setting. When local altimeter setting not received, use Ephrata altimeter setting; increase all DA 36 feet and all MDA 40 feet, increase LNAV/VNAV visibility all Cats 1/8 SM, LNAV Cats C and D and Circling Cat D 1/4 SM.

MISSED APPROACH: Climb to 4000 direct HEDBI and on track 124° to UPBOB and hold.

ATIS <b>119.05</b>	GRANT COUNTY APP CON * <b>126.4 379.95</b>	GRANT COUNTY TOWER * <b>118.25 (CTAF) 0 257.8 (EAST)</b> <b>128.0 257.8 (WEST)</b>	GND CON <b>121.9</b>	UNICOM <b>122.95</b>
-----------------------	---	--	-------------------------	-------------------------



ELEV 1189	<b>D</b>	TDZE 1169
-----------	----------	-----------

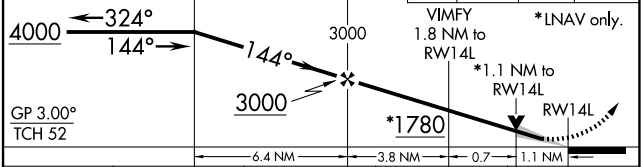


REIL Rwy 4  
 REIL Rwy 14L and 22  
 HIRL Rwy 14L-32R  
 MIRL Rwy 4-22 and 18-36

VGSI and RNAV glidepath not coincident (VGSI Angle 3.00/TCH 75).

4000	HEDBI	tr 124°	UPBOB
------	-------	---------	-------

\*LNAV only.



CATEGORY	A	B	C	D
LPV DA		1369-3/4	200 (200-3/4)	
LNAV/VNAV DA		1436-7/8	267 (300-7/8)	
LNAV MDA	1580-1	411 (400-1)	1580-1 1/8	411 (400-1 1/8)
CIRCLING	1660-1	471 (500-1)	1680-1 1/2	1820-2 631 (700-2)

NW-1, 20 MAR 2025 to 17 APR 2025

NW-1, 20 MAR 2025 to 17 APR 2025