

STANDARD DEPARTURE CHART -INSTRUMENT

RJOR / TOTTORI

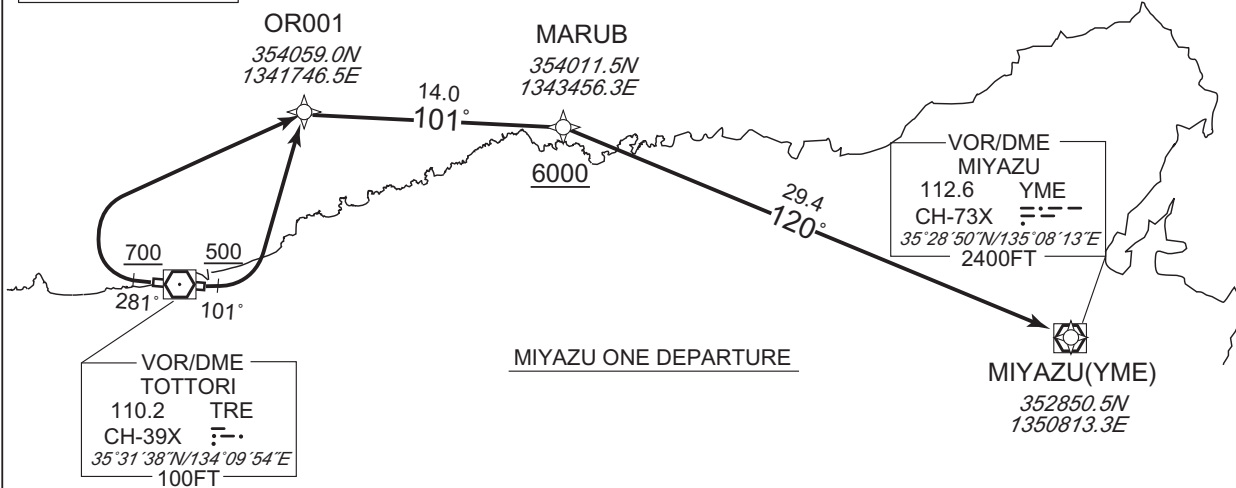
RNAV SID

MIYAZU ONE DEPARTURE

RNP1

Note GNSS required.

VAR 8°W (2013)



MIYAZU ONE DEPARTURE

RWY10: Climb on HDG 101° at or above 500FT, turn left direct to OR001, to MARUB at or above 6000FT, to YME.

RWY28: Climb on HDG 281° at or above 700FT, turn right direct to OR001, to MARUB at or above 6000FT, to YME.

NOTE RWY10: 5.3% climb gradient required up to 1100FT.
OBST ALT 853FT located at 3.6NM 102° FM end of RWY10.

RWY28: 3.6% climb gradient required up to 700FT.
OBST ALT 394FT located at 2.2NM 264° FM end of RWY28.

RWY10

| Serial Number | Path Descriptor | Waypoint Identifier | Fly Over | Course °M(°T) | Magnetic Variation | Distance (NM) | Turn Direction | Altitude (FT) | Speed (KIAS) | Vertical Angle | Navigation Specification |
|---------------|-----------------|---------------------|----------|---------------|--------------------|---------------|----------------|---------------|--------------|----------------|--------------------------|
| 001 | VA | — | — | 101 (093.8) | -7.6 | — | — | +500 | — | — | RNP1 |
| 002 | DF | OR001 | — | — | -7.6 | — | L | — | — | — | RNP1 |
| 003 | TF | MARUB | — | 101 (093.2) | -7.6 | 14.0 | — | +6000 | — | — | RNP1 |
| 004 | TF | YME | — | 120 (112.6) | -7.6 | 29.4 | — | — | — | — | RNP1 |

RWY28

| Serial Number | Path Descriptor | Waypoint Identifier | Fly Over | Course °M(°T) | Magnetic Variation | Distance (NM) | Turn Direction | Altitude (FT) | Speed (KIAS) | Vertical Angle | Navigation Specification |
|---------------|-----------------|---------------------|----------|---------------|--------------------|---------------|----------------|---------------|--------------|----------------|--------------------------|
| 001 | VA | — | — | 281 (273.8) | -7.6 | — | — | +700 | — | — | RNP1 |
| 002 | DF | OR001 | — | — | -7.6 | — | R | — | — | — | RNP1 |
| 003 | TF | MARUB | — | 101 (093.2) | -7.6 | 14.0 | — | +6000 | — | — | RNP1 |
| 004 | TF | YME | — | 120 (112.6) | -7.6 | 29.4 | — | — | — | — | RNP1 |

CHANGE : Navigation Specification(Basic RNP1 → RNP1).