

Akureyri RNP SID RWY 19 - ASKUR 1C, JARRI 1C

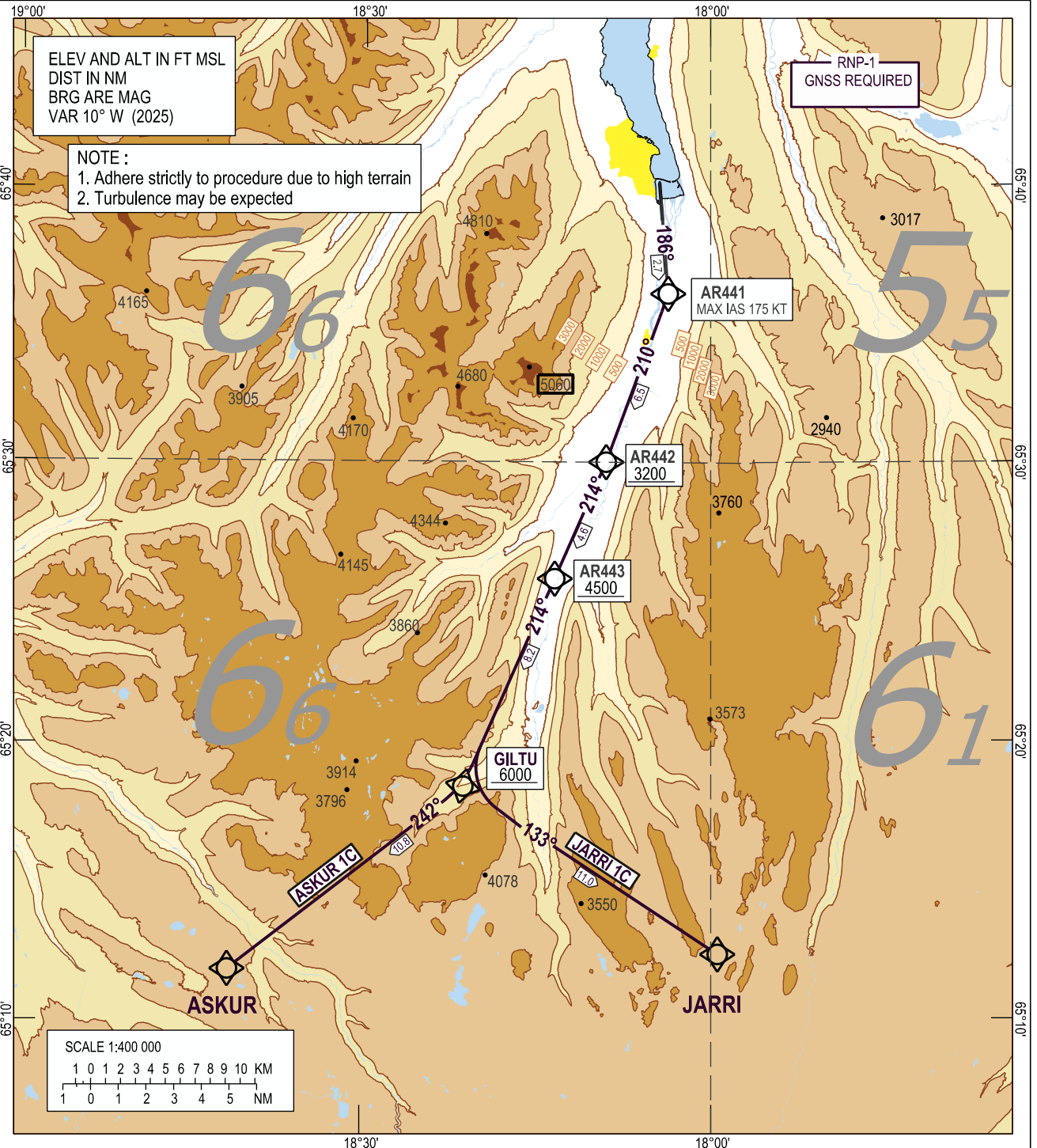
STANDARD DEPARTURE CHART -  
INSTRUMENT (SID) - ICAO

TRANSITION  
ALTITUDE 7000  
AERODROME ELEV 7

AKUREYRI TWR / APP	118.200
REYKJAVIK ACC	119.700
ATIS	136.200

BIAR - AKUREYRI

RNP SID RWY 19  
ASKUR 1C, JARRI 1C



CHANGES : MAG VAR

GS KT	75	100	125	150	175	200	225	250	275
5.8% Climb Gradient	440	590	730	880	1030	1170	1320	1470	1620
3.3% Climb Gradient	250	335	420	500	585	670	750	835	920

STANDARD DEPARTURE ROUTES- INSTRUMENT (SID) – ICAO			BIAR - AKUREYRI  RNP SID RWY 19	
<p><b>REMARKS:</b> Aircraft CAT A, B and C only</p> <p><b>GENERAL:</b> RNP 1 required. Loss of RNP 1 capability – Advise ATC Maximum speed below FL100; 250 KT IAS unless otherwise stated under RESTRICTIONS or instructed by ATC.</p> <p><b>RADIO COMMUNICATION FAILURE:</b> Set transponder to A 7600 Proceed in accordance with GEN 3.4.4.12.</p> <p><b>NOTE:</b> Change to STANDARD QNH at Transition Altitude or passing last altitude restriction if lower.</p>				
DESIGNATOR	ROUTE	RESTRICTIONS	After Take-Off	
			CLIMB TO	Contact
ASKUR 1C	To AR441 on course 186°, right turn to AR442, to AR443, to GILTU, right turn to ASKUR.	A MNM climb gradient of <b>5.8%</b> i.e. 352 FT/NM is required up to <b>4100</b> FT, thereafter MNM climb gradient of 3.3% i.e 201 FT/NM MAX IAS 175 KT until AR441 Cross AR442 at 3200 FT or above. Cross AR443 at 4500 FT or above. Cross GILTU at 6000 FT or above,	As cleared by ATC	Reykjavik Control 119.700 when instructed.
JARRI 1C	To AR441 on course 186°, right turn to AR442, to AR443, to GILTU, left turn to JARRI.	A MNM climb gradient of <b>5.8%</b> i.e. 352 FT/NM is required up to <b>4100</b> FT, thereafter MNM climb gradient of 3.3% i.e 201 FT/NM MAX IAS 175 KT until AR441 Cross AR442 at 3200 FT or above. Cross AR443 at 4500 FT or above. Cross GILTU at 6000 FT or above	As cleared by ATC	Reykjavik Control 119.700 when instructed

For **RECOMMENDED CODING TABLE** see AD 2 BIAR 7 - 19

For **WAYPOINT COORDINATES** see BIAR AD 4 - 1