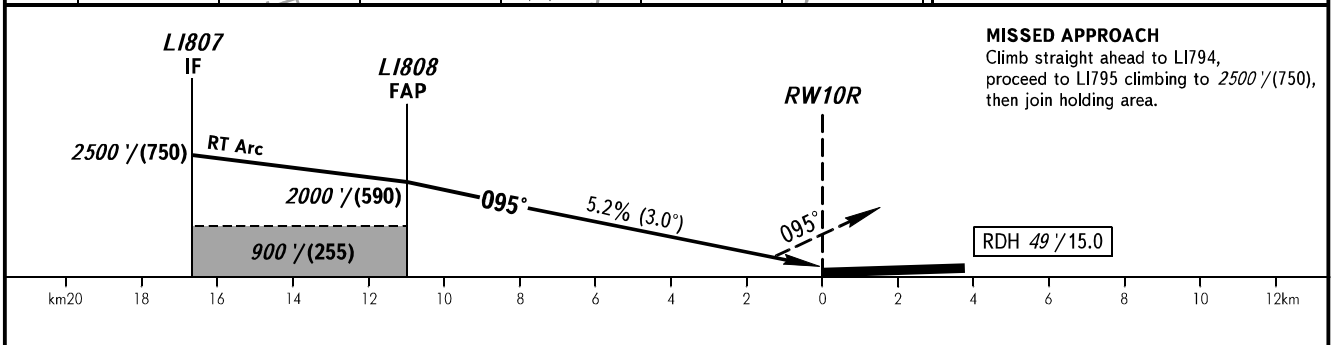
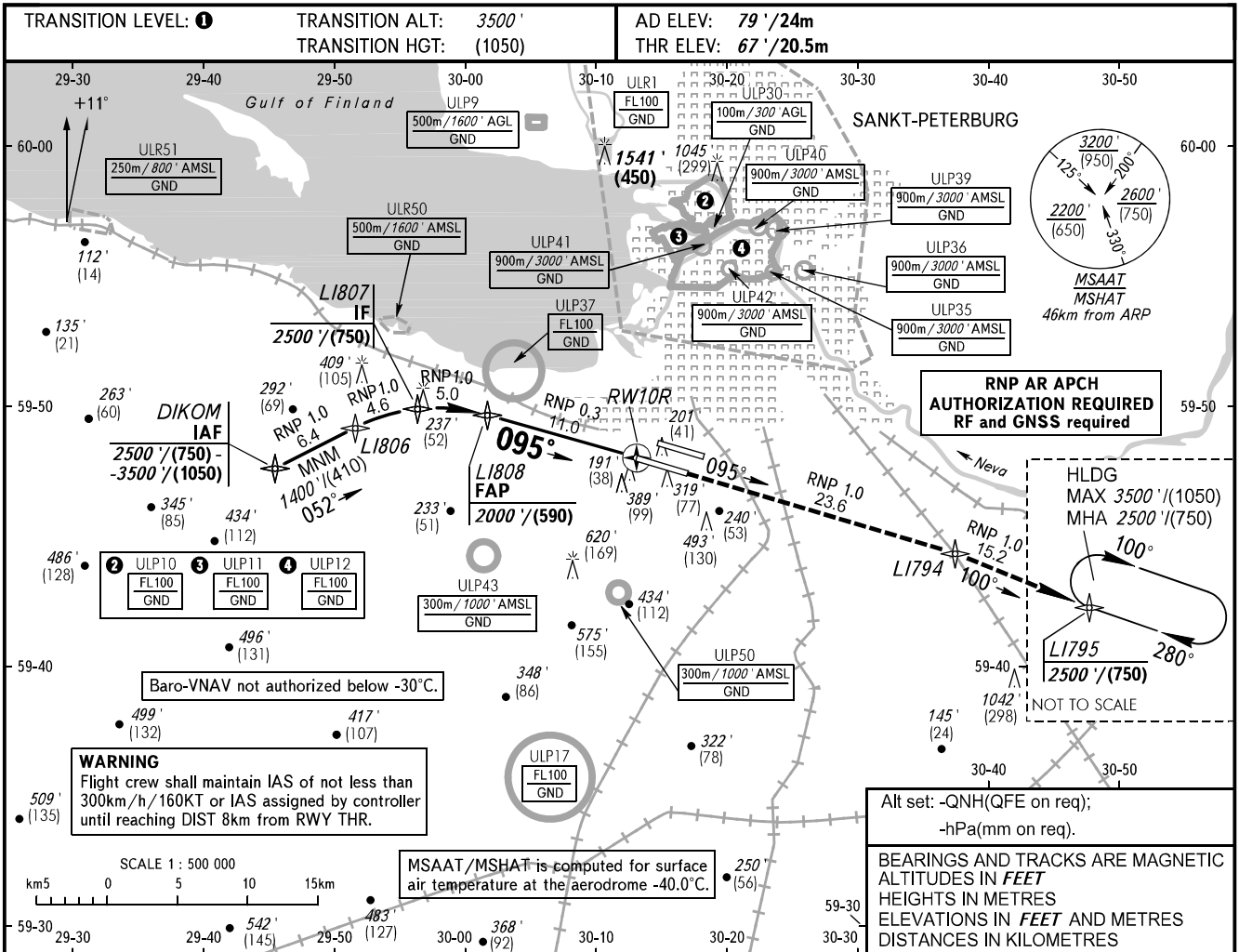


**INSTRUMENT
APPROACH
CHART - ICAO**

RADAR **120.300**
TOWER **118.700**

SANKT-PETERBURG, RUSSIA
PULKOVO
RNP Y RWY 10R (AR)



OCA(H)		A	B	C	D
Straight-in Approach	RNP (0.3)	350' (290') (90)	370' (310') (95)	400' (340') (105)	410' (350') (105)
Circling		690' (610') (190)	790' (710') (220)	890' (810') (250)	1020' (940') (290)

1 **TRANSITION LEVEL:**
- FL050 when QNH is 996 hPa (747mm mercury column) or above;
- FL060 when QNH is 960 hPa (720mm mercury column);
- FL070 when QNH is less than 960 hPa (720mm mercury column).

WARNING
Visual manoeuvring to the north of the AD is PROHIBITED.

GROUND SPEED	km/h	150	180	210	240	270	300	330	360	390
	kt	80	100	110	130	145	160	180	195	210
RATE OF DESCENT	m/s	2.2	2.6	3.1	3.5	3.9	4.4	4.8	5.2	5.7
	ft/min	430	516	602	688	774	860	946	1032	1118