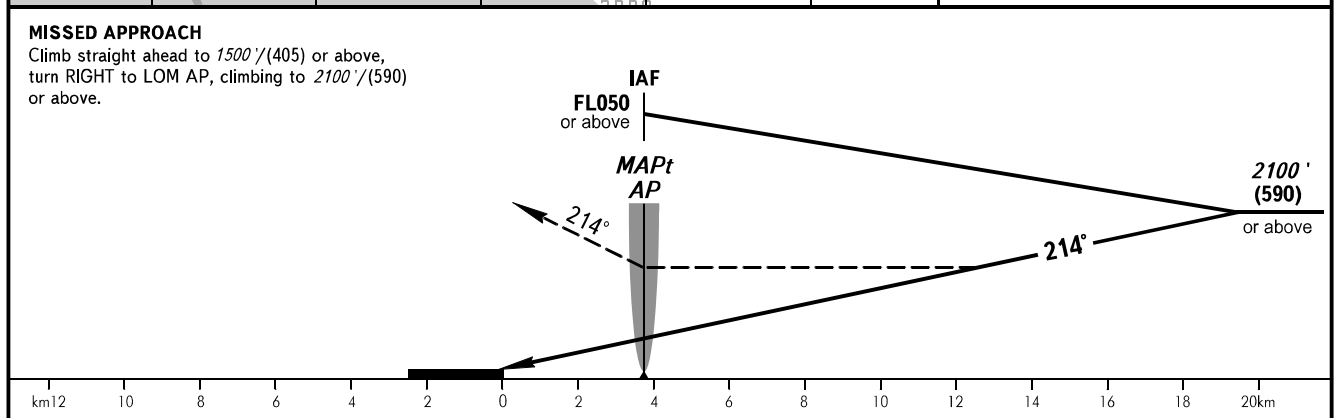
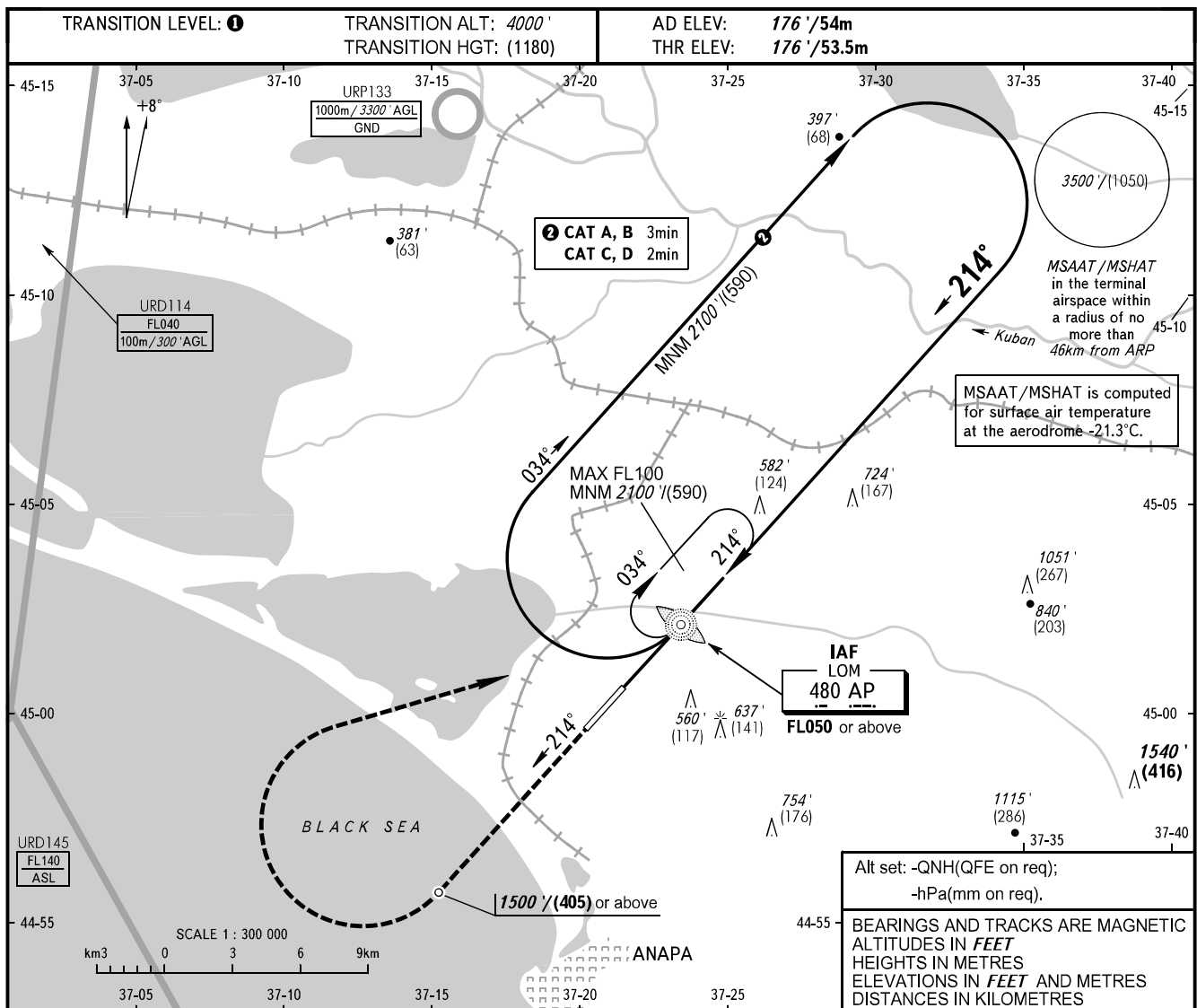


**INSTRUMENT
APPROACH
CHART - ICAO**

ANAPA, RUSSIA
VITYAZEVO
NDB B RWY 21

ANAPA RADAR **118.700**
ANAPA TOWER **119.800**



OCA(H)	A	B	C	D
Straight-in	NOT AVBL			
Approach				
Circling	860' (262) (210)	940' (287) (235)	1040' (317) (265)	1150' (351) (300)

① TRANSITION LEVEL:
- FL050 when QNH is 1013 hPa (760mm mercury column) or above;
- FL060 when QNH is 977 hPa (733mm mercury column) or above, but less than 1013 hPa (760mm mercury column);
- FL070 when QNH is less than 977 hPa (733mm mercury column).

WARNING
MAPt at LOM AP.
Timing not authorized for defining MAPt.
Turn before passing MAPt is PROHIBITED.