

STANDARD DEPARTURE CHART - INSTRUMENT

RJEO / OKUSHIRI

SID

ESASI TWO DEPARTURE

RWY13 : Turn left,...

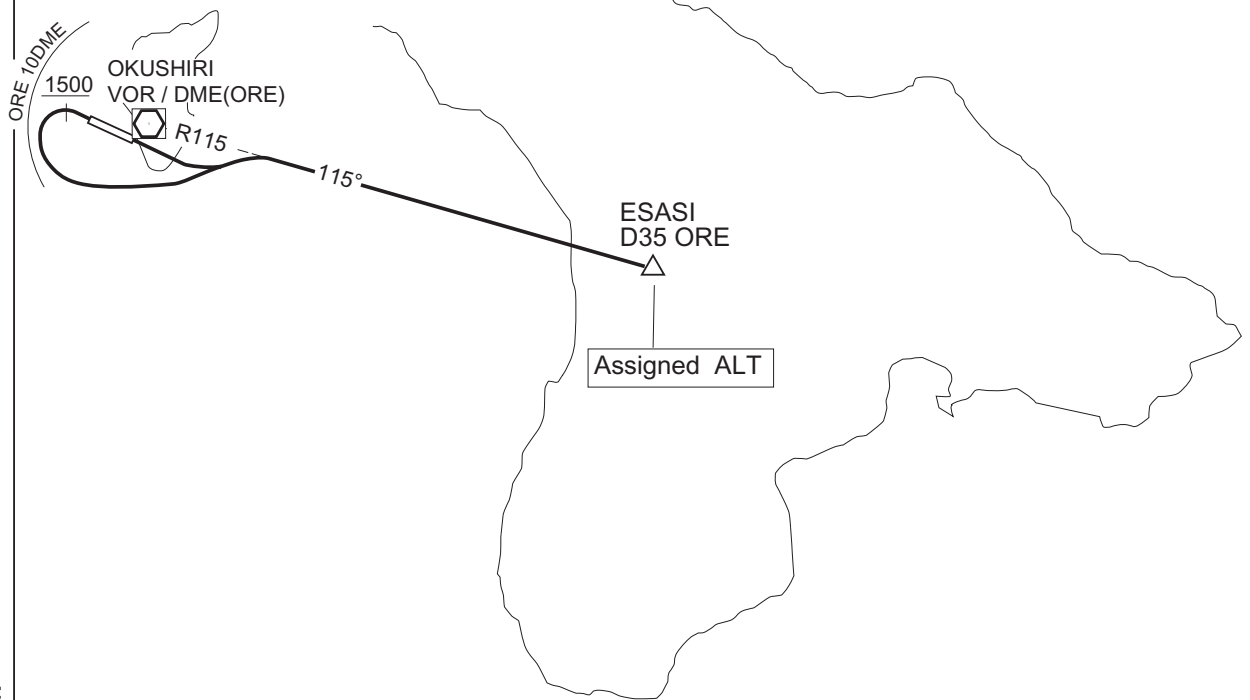
RWY31 : Climb via RWY HDG until 1500FT or above, complete left turn within  
ORE 10DME,...

...climb via ORE R115 to ESASI.

Cross ESASI at assigned or specified altitude.

Note : When take off from RWY13, following climb gradient should be  
maintained until 700FT.

Speed (Knots)	60	90	120	150	180	210
Rate (Feet/Min)	300	450	600	750	900	1050



CHANGE : TAKE OFF MINIMA deleted.