

**INSTRUMENT APPROACH CHART - ICAO**

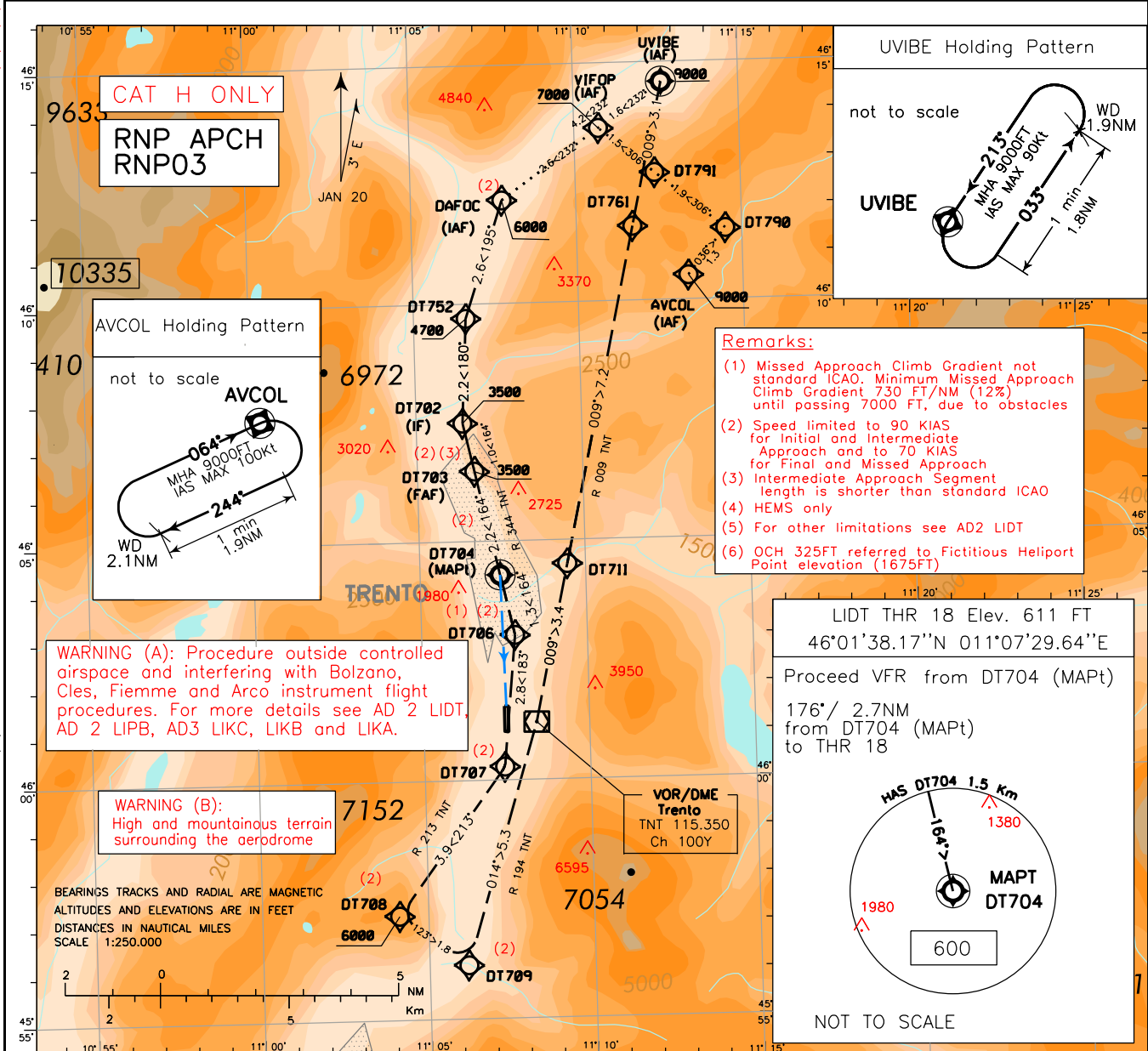
**EGNOS CH 60023 E16B**

Padova ACC 120.725  
Padova FIC 124.150  
AFIS Trento Aerodrome Info 119.650  
AFIS Bolzano Aerodrome Info 120.600

**AD ELEV 610**

**TRENTO/Mattarello LIDT RNP Y 164**

CHANGE: WARNING (A) UPDATED DOC 8168 ED. 7 - 2020 - AMDT 9 (1) (3)



**TRANSITION ALT 10000**

**HCH 10.7 m**

**MISSED APPROACH:** (1) Proceed on TR 164° (RDL 344 TNT VOR) climbing to 9000 FT. At DT706 (D1.9 TNT DME) turn right on TR 183° to DT707 then right turn on TR 213° (RDL 213 TNT VOR). At DT708 (D5 TNT DME), turn left on TR 123° to DT709 then turn left on TR 014° (RDL 194 TNT VOR) bound to TNT VOR then proceed via DT711 and DT761 bound to UVICE Holding Pattern to be reached at 9000 FT. IAS MAX 70 Kt during Missed Approach turns.

**Profile View:**

NM from MAPt (DT704)

THR ELEV 611

TNT DME 6 5 4 3 2 1 0 1 2 3 4 5 6 7 8 9 10 11 TNT DME

OCA (OCH)	CAT H	GS	FT PER MIN	FAF-MAPT		DIST DT704	ALT(HGT)
				2.2 NM	2		
LPV	2000 (1390) <sup>(6)</sup>	90	1003	1:28	1	4342(3732)	
		80	891	1:39			
		70	780	1:53			
		60	668	2:12			

**MNM SECT ALT 25 NM ARP LIDT**

14400

Produced by ENAV SpA/Roma - Data provided by Trentino Trasporti Spa