

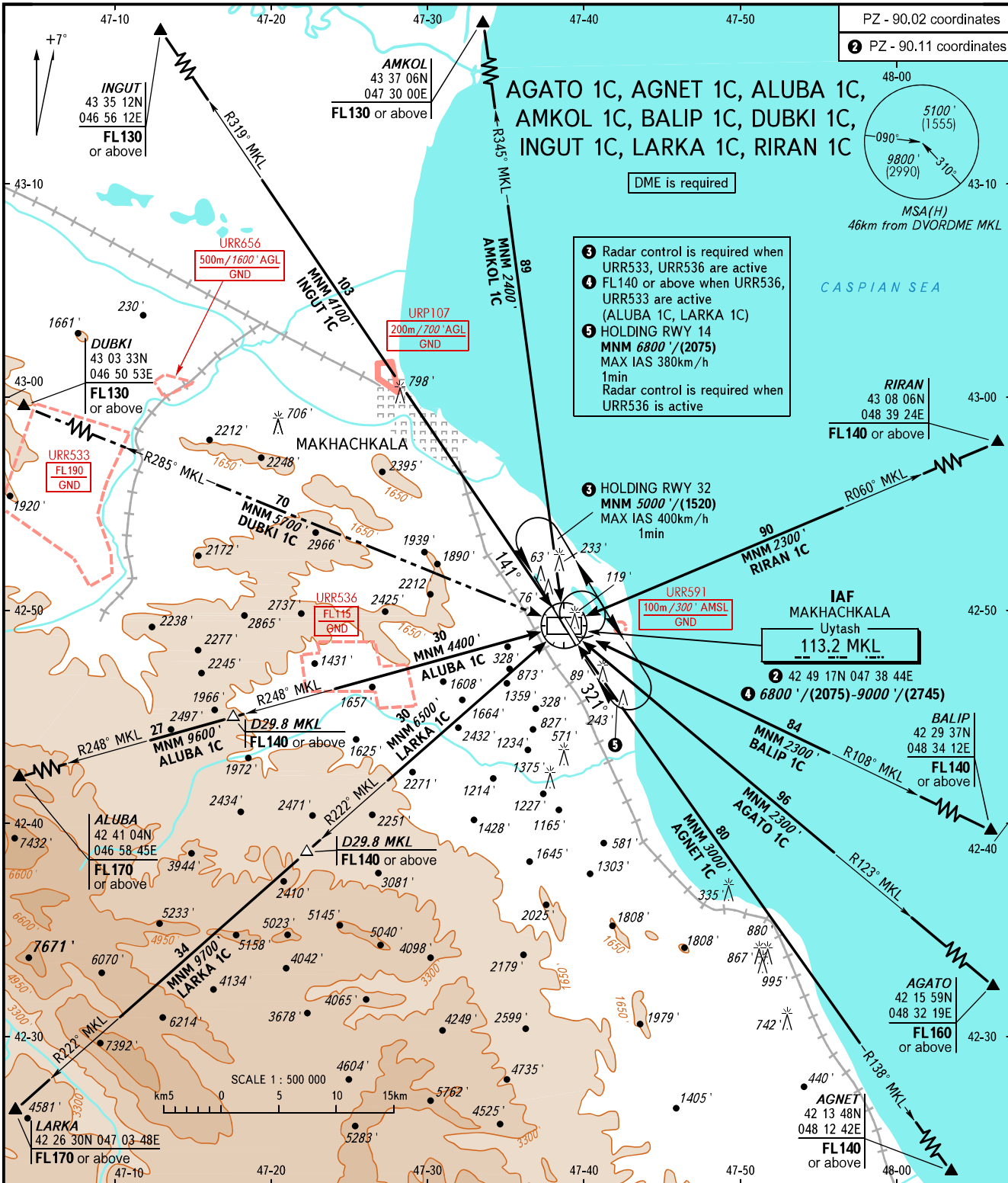
STANDARD ARRIVAL CHART
INSTRUMENT (STAR) - ICAO

MAKHACHKALA, RUSSIA

UYTASH

RWY 14/32

TRANSITION
LEVEL: **1**



- 1 Radar control is required when URR533, URR536 are active
- 2 FL140 or above when URR536, URR533 are active (ALUBA 1C, LARKA 1C)
- 3 HOLDING RWY 14
MNM 6800' / (2075)
MAX IAS 380km/h
1min
Radar control is required when URR536 is active
- 4 HOLDING RWY 32
MNM 5000' / (1520)
MAX IAS 400km/h
1min

APPROACH **119.700**
RADAR **121.300**
START **121.300**

- 1** TRANSITION LEVEL:
- FL110 when QNH is 1013 hPa (760mm mercury column) or above;
 - FL120 when QNH is 977 hPa (733mm mercury column) or above, but less than 1013 hPa (760mm mercury column);
 - FL130 when QNH is less than 977 hPa (733mm mercury column).
- WARNING:**
1. DUBKI 1C is not AVBL when URR533 is active.
 2. HGT is given relative to RWY 14 THR ELEV 0'/0.0m.

BEARINGS AND TRACKS ARE MAGNETIC
ALTITUDES AND ELEVATIONS IN FEET
HEIGHTS IN METRES
DISTANCES IN KILOMETRES

Alt set: -QNH(QFE on req);
-hPa(mm on req).

CHANGE: New chart