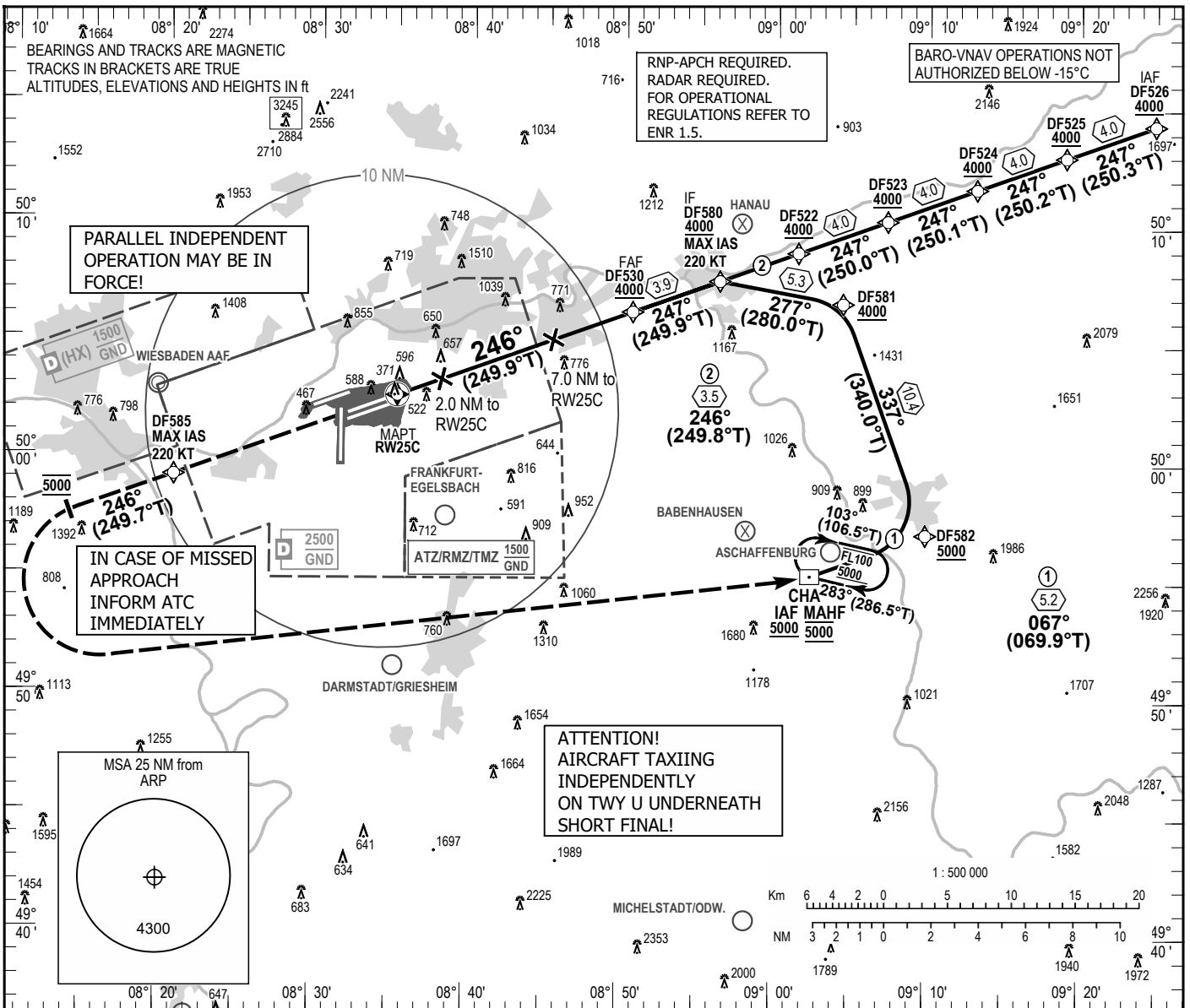


INSTRUMENT APPROACH CHART - ICAO

VAR 3° E
ELEV 363
OCH RELATED TO THR 25C ELEV 363

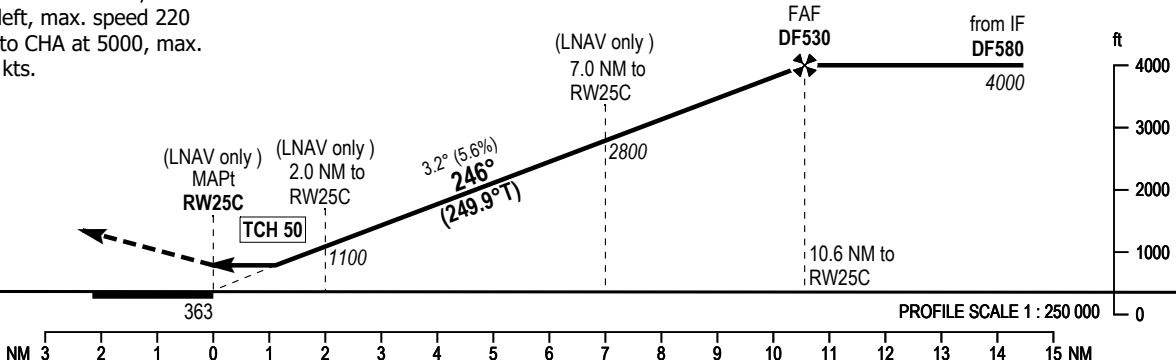
FRANKFURT ATIS	118.030	FRANKFURT TOWER	119.905
LANGEN RADAR	120.805	FRANKFURT GROUND	121.805
LANGEN RADAR	125.355	FRANKFURT APRON	121.755
FRANKFURT ARRIVAL	127.280	FRANKFURT APRON	121.855
FRANKFURT TOWER	118.780	FRANKFURT APRON	121.955

FRANKFURT MAIN
RNP Y RWY 25C
EGNOS CH 60675 E25J



MISSED APPROACH PROCEDURE

Direct to DF585, max. speed 220 kts; climb on course 246°, at 5000 turn left, max. speed 220 kts; direct to CHA at 5000, max. speed 250 kts.



OCA (OCH)	A	B	C	D	DL
LNAV	790 (430)	790 (430)	790 (430)	790 (430)	
LNAV / VNAV	694 (331)	703 (340)	709 (346)	716 (353)	
LPV	504 (141)	516 (153)	524 (161)	535 (172)	535 (172)

DIST THR / RW25C	2	3	4	5	6	7	8	9	10
ALTITUDE	1100	1450	1790	2130	2470	2800	3140	3480	3820

GS	kt	80	100	120	140	160	180
DF530 - RW25C (10.6 NM)	MIN:SEC	7:55	6:20	5:17	4:32	3:58	3:31
Rate of descent (5.6%)	ft/MIN	450	570	680	790	910	1020

Correction: Callsign.