

STANDARD DEPARTURE CHART-INSTRUMENT

RJSC / YAMAGATA

RNAV SID

NIIGATA ONE DEPARTURE

RNP1

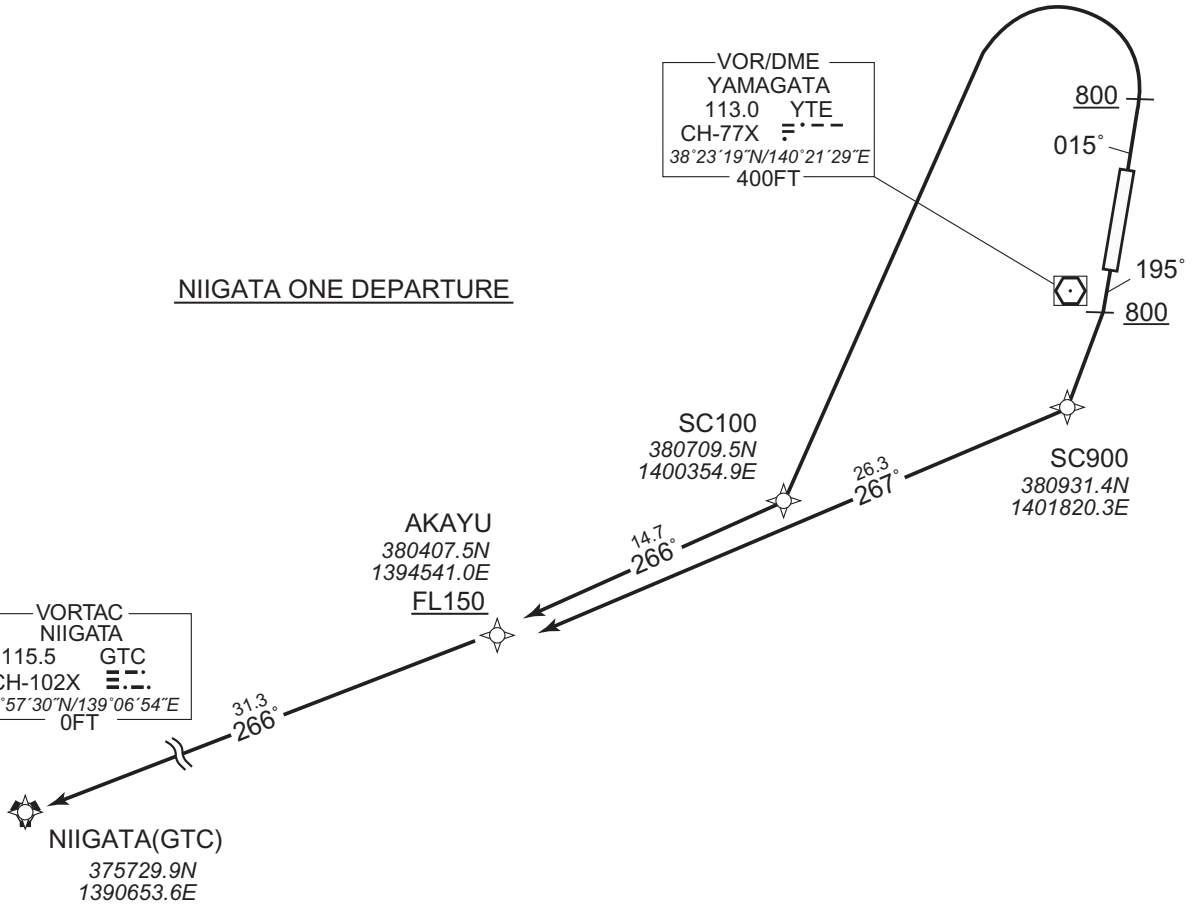
Note GNSS required.

VAR 8°W (2017)

NIIGATA ONE DEPARTURE

VOR/DME  
YAMAGATA  
113.0 YTE  
CH-77X   
38°23'19"N/140°21'29"E  
400FT

VORTAC  
NIIGATA  
115.5 GTC  
CH-102X   
37°57'30"N/139°06'54"E  
0FT



NIIGATA ONE DEPARTURE

RWY01 : Climb on HDG015° at or above 800FT, turn left direct to SC100,...  
 RWY19 : Climb on HDG195° at or above 800FT, direct to SC900,...  
 ... to AKAYU at or above FL150, to GTC.

Note RWY01 : 5.5% climb gradient required up to 2500FT.  
 OBST ALT 2198FT located at 6.3NM 321° FM end of RWY01.  
 RWY19 : 4.3% climb gradient required up to 800FT.  
 OBST ALT 722FT located at 2.8NM 182° FM end of RWY19.

CHANGE : Navigation Specification(Basic RNP1 → RNP1).

STANDARD DEPARTURE CHART-INSTRUMENT

RJSC / YAMAGATA

RNAV SID

NIIGATA ONE DEPARTURE

RWY01

Serial Number	Path Descriptor	Waypoint Identifier	Fly Over	Course °M(°T)	Magnetic Variation	Distance (NM)	Turn Direction	Altitude (FT)	Speed (KIAS)	Vertical Angle	Navigation Specification
001	VA	-	-	015 (006.6)	-8.2	-	-	+800	-	-	RNP1
002	DF	SC100	-	-	-8.2	-	L	-	-	-	RNP1
003	TF	AKAYU	-	266 (258.2)	-8.2	14.7	-	+FL150	-	-	RNP1
004	TF	GTC	-	266 (258.0)	-8.2	31.3	-	-	-	-	RNP1

RWY19

Serial Number	Path Descriptor	Waypoint Identifier	Fly Over	Course °M(°T)	Magnetic Variation	Distance (NM)	Turn Direction	Altitude (FT)	Speed (KIAS)	Vertical Angle	Navigation Specification
001	VA	-	-	195 (186.6)	-8.2	-	-	+800	-	-	RNP1
002	DF	SC900	-	-	-8.2	-	-	-	-	-	RNP1
003	TF	AKAYU	-	267 (258.3)	-8.2	26.3	-	+FL150	-	-	RNP1
004	TF	GTC	-	266 (258.0)	-8.2	31.3	-	-	-	-	RNP1

CHANGE : Navigation Specification(Basic RNP1 → RNP1).