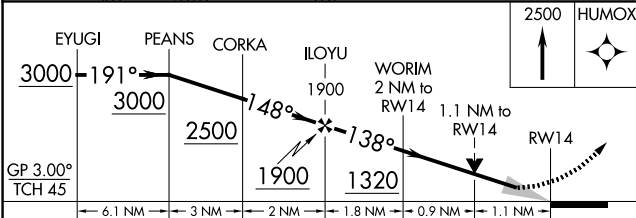
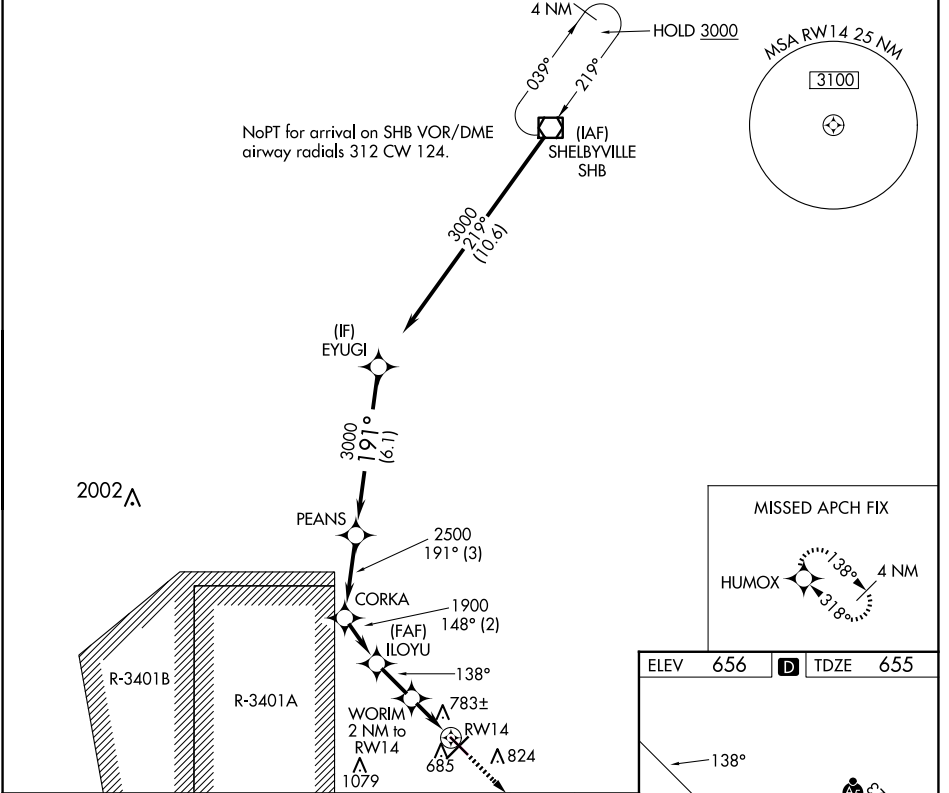


WAAS CH <b>62847</b> <b>W14A</b>	APP CRS <b>138°</b>	Rwy Idg TDZE Apt Elev	<b>5000</b> <b>655</b> <b>656</b>
--	------------------------	-----------------------------	---

# RNAV (GPS) RWY 14

COLUMBUS MUNI (BAK)

RNP APCH - GPS.		MISSED APPROACH: Climb to 2500 direct HUMOX and hold.			
▼ For uncompensated Baro-VNAV systems, LNAV/VNAV NA ▲ below -16°C or above 54°C.					
AWOS-3 <b>119.75</b>	INDIANAPOLIS APP CON <b>134.85 317.8</b>	COLUMBUS TOWER ★ <b>118.6 (CTAF) 0</b>	GND CON <b>121.6</b>	CLNC DEL <b>134.85</b> (When twr closed)	UNICOM <b>122.95</b>



CATEGORY	A	B	C	D
LPV DA		855- <sup>3</sup> / <sub>4</sub>	200 (200- <sup>3</sup> / <sub>4</sub> )	
LNAV/VNAV DA		944- <sup>7</sup> / <sub>8</sub>	289 (300- <sup>7</sup> / <sub>8</sub> )	
LNAV MDA	1040-1	385 (400-1)	1040-1 <sup>1</sup> / <sub>8</sub>	385 (400-1 <sup>1</sup> / <sub>8</sub> )
CRCLING	1140-1	484 (500-1)	1200-1 <sup>1</sup> / <sub>2</sub> 544 (600-1 <sup>1</sup> / <sub>2</sub> )	1400-2 <sup>1</sup> / <sub>2</sub> 744 (800-2 <sup>1</sup> / <sub>2</sub> )

ELEV 656	TDZE 655
----------	----------

MIRL Rwy 14-32

HIRL Rwy 5-23

REIL Rws 5, 14, and 32

EC-2, 20 MAR 2025 to 17 APR 2025

EC-2, 20 MAR 2025 to 17 APR 2025