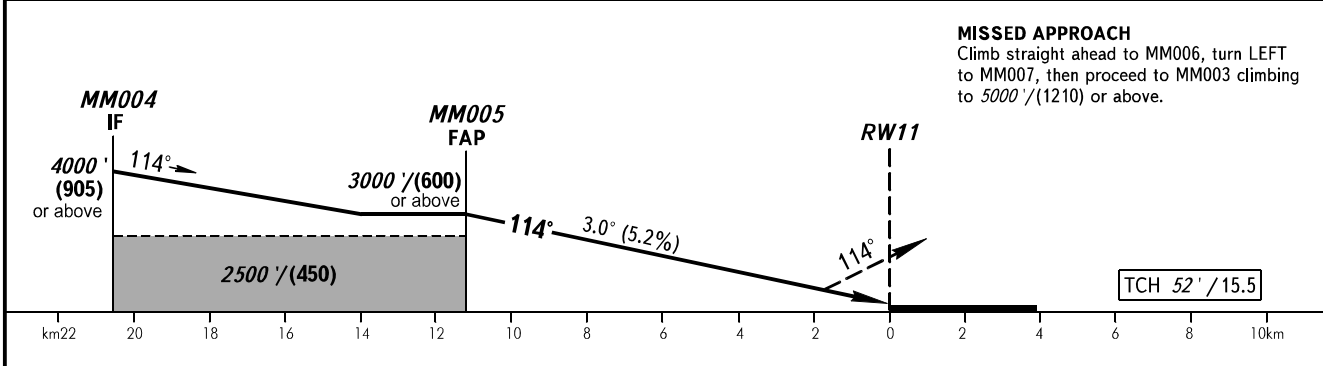
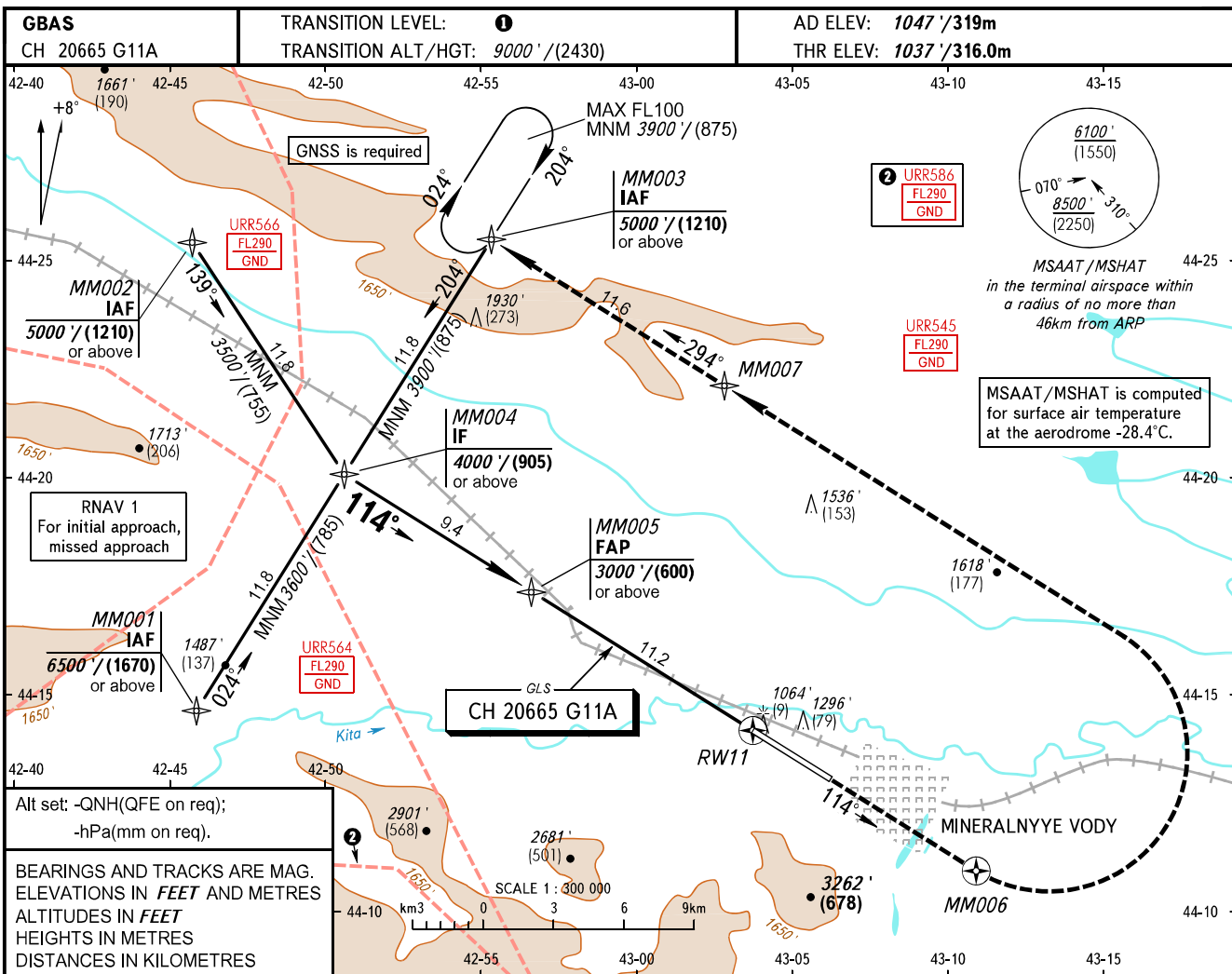


**INSTRUMENT  
APPROACH  
CHART - ICAO**

RADAR START **120.700**  
START **128.000**

**MINERALNYYE VODY, RUSSIA**  
MINERALNYYE VODY  
GLS RWY 11



OCA(H)		A	B	C	D				
Straight-in Approach	CAT I	1194' (158') (49)	1206' (170') (52)	1214' (178') (55)	1225' (189') (58)				
	Circling	1890' (840') (260)	1890' (840') (260)	2180' (1140') (350)	2320' (1280') (395)				
GROUND SPEED	km/h	150	180	210	240	270	300	330	360
	kt	81	97	113	130	146	162	178	194
RATE OF DESCENT	m/s	2.2	2.6	3.0	3.5	3.9	4.3	4.8	5.2
	ft/min	427	512	597	682	768	853	938	1024

**1** TRANSITION LEVEL:  
- FL100 when QNH is 1013 hPa (760mm mercury column) or above;  
- FL110 when QNH is 977 hPa (733mm mercury column) or above, but less than 1013 hPa (760mm mercury column);  
- FL120 when QNH is less than 977 hPa (733mm mercury column).

Visual manoeuvring south of the AD is PROHIBITED.

**NOTE**  
Procedure is not AVBL, when URR545, URR564, URR566 are active.

CHANGE: New chart