

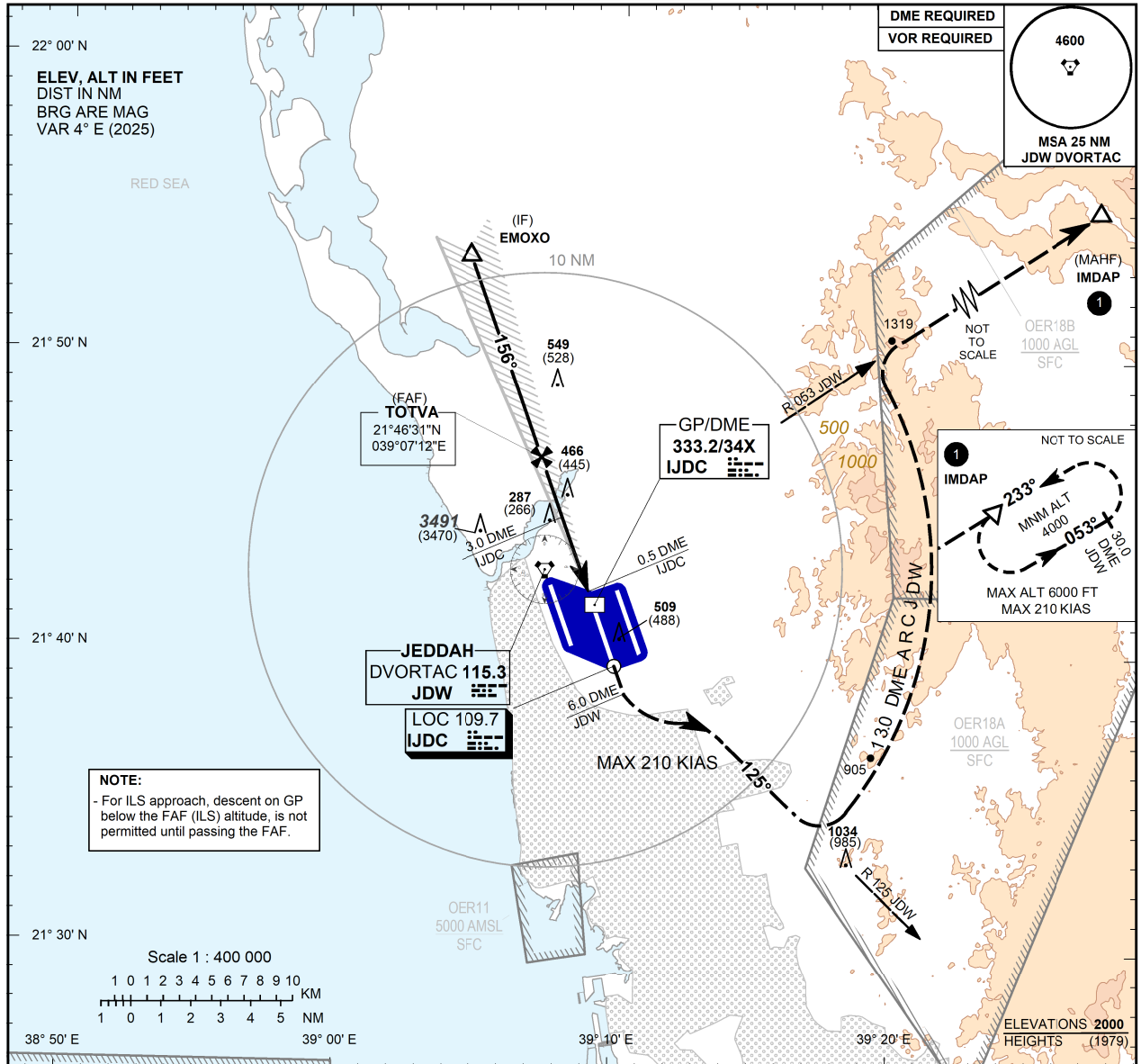
**INSTRUMENT
APPROACH
CHART - ICAO**

**AERODROME ELEV 50 FT
HEIGHTS RELATED TO
THR RWY 16C - ELEV 21 FT**

TWR 118.2(W) 118.3(W)
118.5(E) 124.3(E)
APP 123.8 124.0
UHF 345.6
ATIS 126.2 ARR 128.7 DEP

JEDDAH/ King Abdulaziz intl (OEJN)

ILS Z or LOC RWY 16C



TRANSITION ALT 13000
TRANSITION LEVEL FL 150

MISSED APPROACH

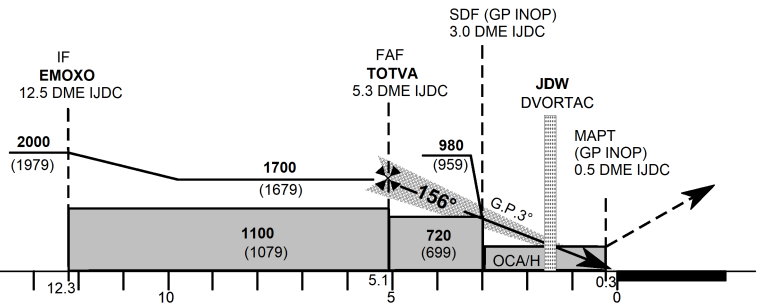
Climb on RWY heading at 6.0 DME JDW
turn left to intercept the **RDL 125 JDW**
turn left and arc follow **JDW 13.0 NM** turn right to
intercept the **RDL 053 JDW** to **IMDAP** and hold.
climb to **4000 FT** (MAX 210 KIAS)

ILS RDH 52

THR ELEV 21

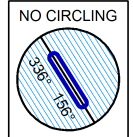
NM to/from THR RWY 16C

		ACFT CAT	A	B	C	D
Straight-in Approach	CAT I	OCA(H)	230 (209)			
		RVR(m)	550			
	GP INOP (With SDF)	OCA(H)	540 (519)			
		RVR(m)	1600			
GP INOP (WO SDF)	OCA(H)	720 (699)				
	RVR(m)	2500				
Circling	OCA(H)	NOT AUTHORIZED				
	VIS(m)	NOT AUTHORIZED				



GND SPEED		Knots	70	90	110	130	150	170	190
FAF - THR 5.1	min:s	4:23	3:24	2:47	2:22	2:03	1:48	1:37	
Rate of Descent (5.24%)	ft/min	370	480	580	690	800	900	1010	
DME IJDC NM			2	3	4	5			
ALT (HGT) 5.24% APCH		658 (637)	976 (955)	1295 (1274)	1613 (1592)				

- RVR/VIS RELATED TO DA (H) MDA (H) = OCA (H)
- CIRCLING NOT AUTHORIZED



ICAO PANS OPS

CHANGE: IF and FAF distance revised
AMDT: Original, 21 JUL 2016