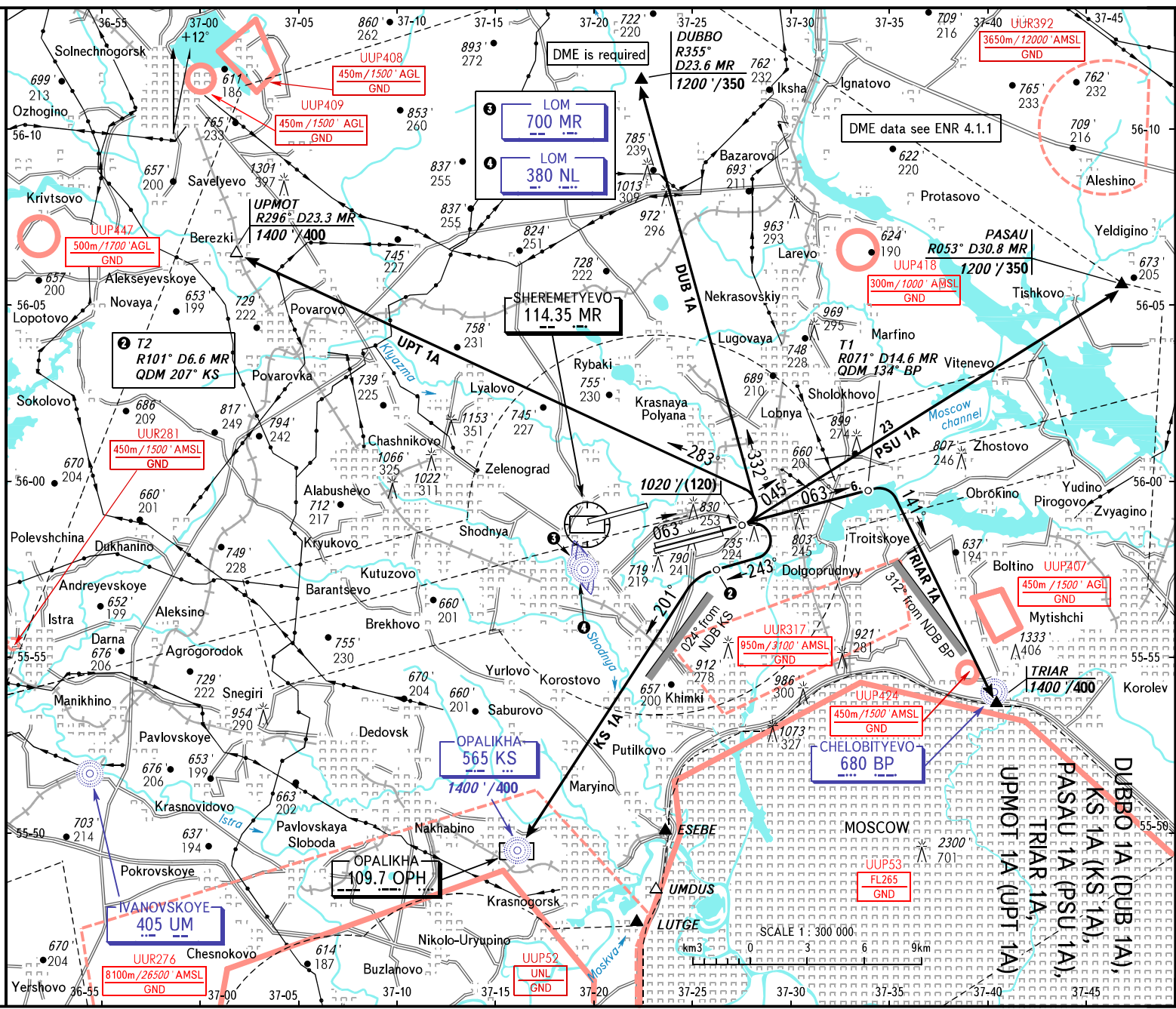


AIP  
RUSSIA  
VFR  
DEPARTURE  
CHART

TRANSITION  
ALTITUDE: 10000'

MOSCOW, RUSSIA  
SHEREMETYEVO  
RWY 06C, 06R

AD 2.1 UUEE-203  
20 FEB 25



**CHANGE: NIL**

BEARINGS AND TRACKS ARE MAGNETIC  
ALTITUDES, ELEVATIONS IN FEET AND METRES  
DISTANCES IN KILOMETRES

Federal Air Transport Agency

WARNING  
MAX IAS for ACFT executing VFR flights  
shall not exceed 450km/h below FL100.  
Lateral and vertical limits see UUEE AD 2.18.

AIRAC AMDT 02/25