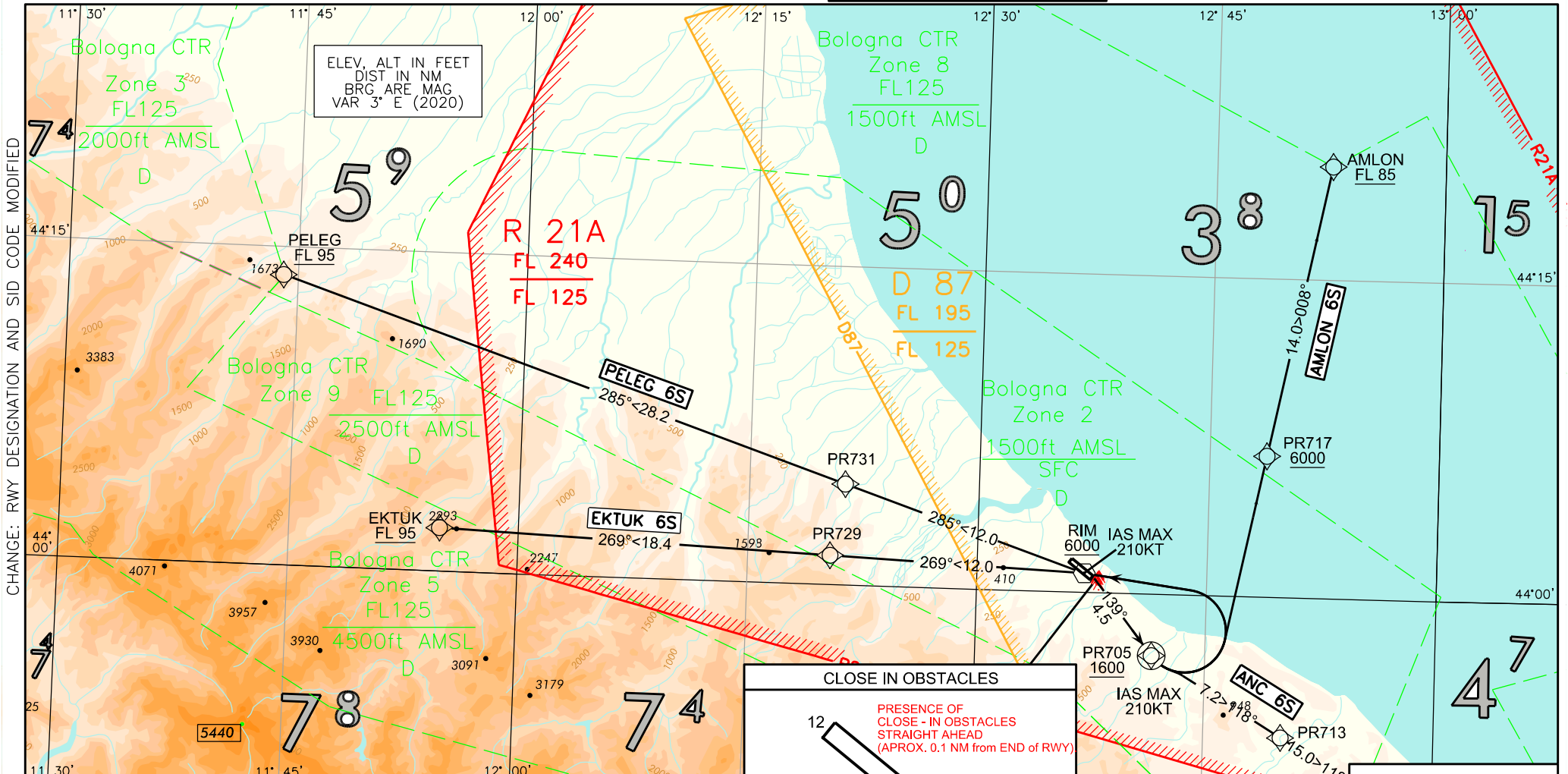


STANDARD DEPARTURE CHART -
INSTRUMENT (SID) - ICAO

TRANSITION ALT
6000 FT

TWR Rimini TWR 131.225
APP Bologna APP/Radar 118.150
(133.775)

RIMINI / MIRAMARE (LIPR)
SID RNAV 1/RNP 1 RWY 12
AMLON 6S ANC 6S EKTUT 6S PELEG 6S



CHANGE: RWY DESIGNATION AND SID CODE MODIFIED

ELEV. ALT IN FEET
DIST IN NM
BRG ARE MAG
VAR 3° E (2020)

CLOSE IN OBSTACLES

PRESENCE OF CLOSE-IN OBSTACLES STRAIGHT AHEAD (APPROX. 0.1 NM FROM END OF RWY)

ONLY HIGHER ELEVATION ARE DEPICTED AMONG OBSTACLES GROUPS.

PR524 FL90

18.2 > 121°

ANC FL 120

NOT TO SCALE

MNM SECT ALT
25 NM ARP

6500

AIRSPACE CLASSIFICATION
SEE AIP ENR 1.4

LEGEND

SID — 031° > 25 →

Not to scale — →

REMARKs

(1) For AMLON 6S, EKTUK 6S and PELEG 6S minimum climb gradient 5.6% (340 FT/NM) until 6000 Ft.

(2) For SID ANC 6S minimum climb gradient 5.6% (340 FT/NM) until FL90.

SCALE 1:500.000