

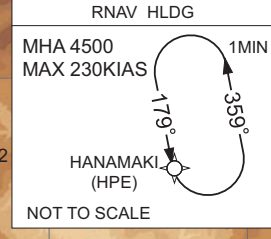
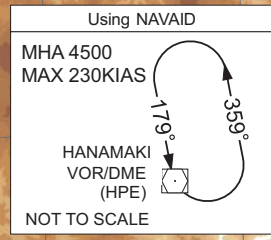
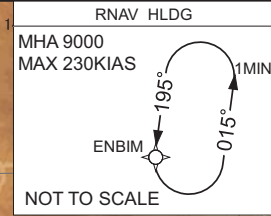
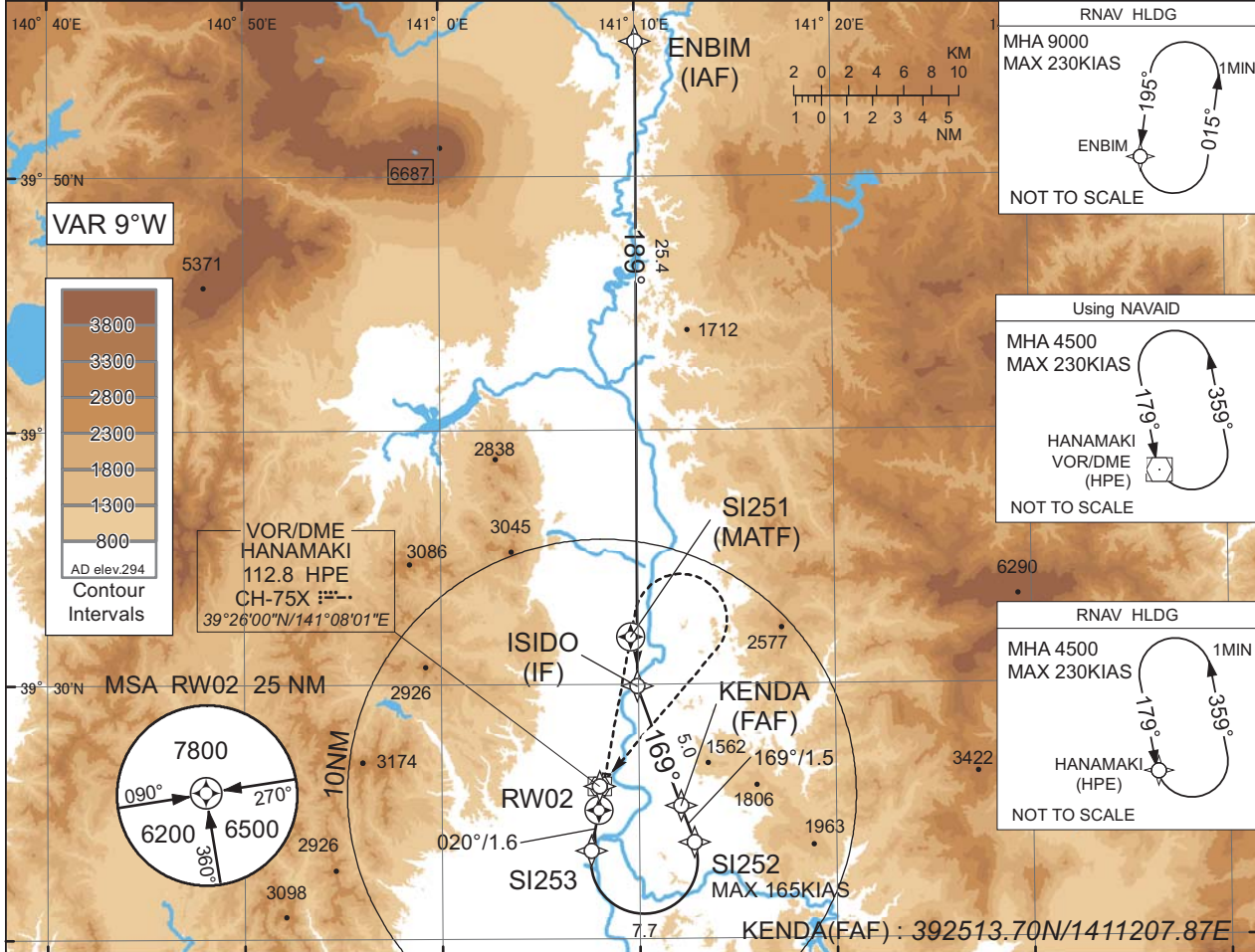
INSTRUMENT APPROACH CHART

RJSI / HANAMAKI

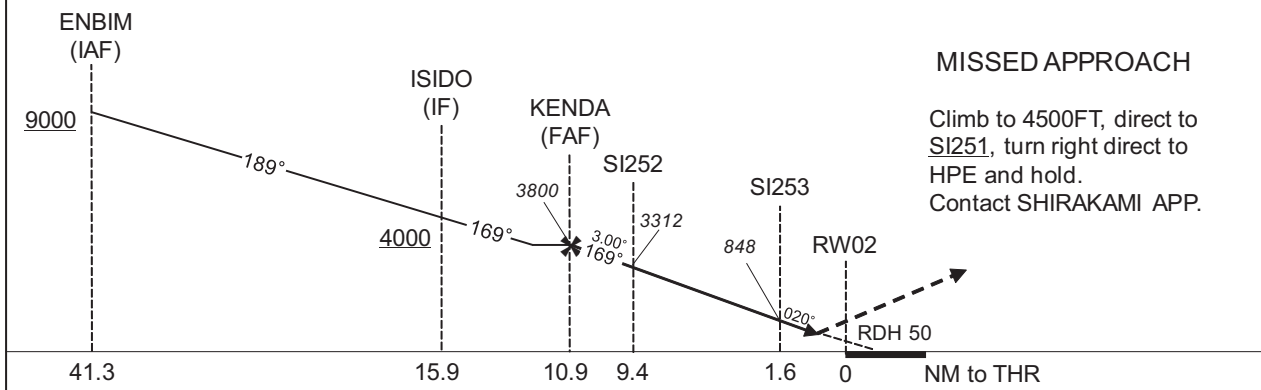
RNP Y RWY02(AR)

SHIRAKAMI APP 119.25 - 315.3 - 120.65	RNP AR RF required.	HANAMAKI RADIO 118.2 - 126.2	RADAR AVBL
--	------------------------	---------------------------------	------------

For uncompensated Baro-VNAV systems, procedure not authorized below -20°C / above 45°C



CHANGE : HLDG pattern for using NAVAID. RNAV HLDG at HANAMAKI.



MISSED APPROACH

Climb to 4500FT, direct to SI251, turn right direct to HPE and hold.
Contact SHIRAKAMI APP.

Missed APCH climb gradient MNM 4.0%

CAT	RNP 0.30	
	DA(H)	CMV
A	-	-
B	-	-
C	595(312)	1400
D	-	1600

Authorization Required

MINIMA with Missed APCH climb gradient of 2.5% are not established.

INSTRUMENT APPROACH CHART

RJSI / HANAMAKI

RNP Y RWY02(AR)

Coding Table

Serial Number	Path Descriptor	Waypoint Identifier	Fly Over	Course °M(°T)	Magnetic Variation	Distance (NM)	Turn Direction	Altitude (FT)	Speed (KIAS)	VPA/ RDH (°/FT)	RNP Value
001	IF	ENBIM	-	-	-8.8	-	-	+9000	-	-	-
002	TF	ISIDO	-	189 (180.2)	-8.8	25.4	-	+4000	-	-	1.0
003	TF	KENDA	-	169 (160.3)	-8.8	5.0	-	3800	-	-	1.0
004	TF	SI252	-	169 (160.4)	-8.8	1.5	-	3312	-165	-3.00	0.3
005	RF Center: SIRF1 r=2.10NM	SI253	-	-	-8.8	7.7	R	848	-	-3.00	0.3
006	TF	RW02	Y	020 (010.7)	-8.8	1.6	-	333	-	-3.00/50	0.3
007	DF	SI251	Y	-	-8.8	-	-	-	-	-	1.0
008	DF	HPE	-	-	-8.8	-	R	4500	-	-	1.0

Path	Waypoint Identifier	Inbound Course °M(°T)	Magnetic Variation	Outbound Time (MIN)	Turn Direction	Minimum Altitude (FT)	Maximum Altitude (FT)	Speed (KIAS)	RNP Value
Hold	ENBIM	195 (186.5)	-8.8	1.0 (-14000)	L	9000	FL140	-230 (-14000)	1.0
Hold	HPE	179 (169.7)	-8.9	1.0 (-14000)	L	4500	FL140	-230 (-14000)	1.0

Waypoint Coordinates

Waypoint Identifier	Coordinates	RF Arc Center Identifier	Coordinates
ENBIM	395519.34N / 1411002.82E	SIRF1	392304.37N / 1411014.42E
ISIDO	392956.45N / 1410957.05E		
KENDA	392513.70N / 1411207.87E		
SI252	392347.07N / 1411247.89E		
SI253	392327.97N / 1410734.24E		
RW02	392503.58N / 1410757.62E		
SI251	393152.68N / 1410937.82E		
HPE	392600.09N / 1410800.60E		

CHANGE : HLDG at HPE. VAR.