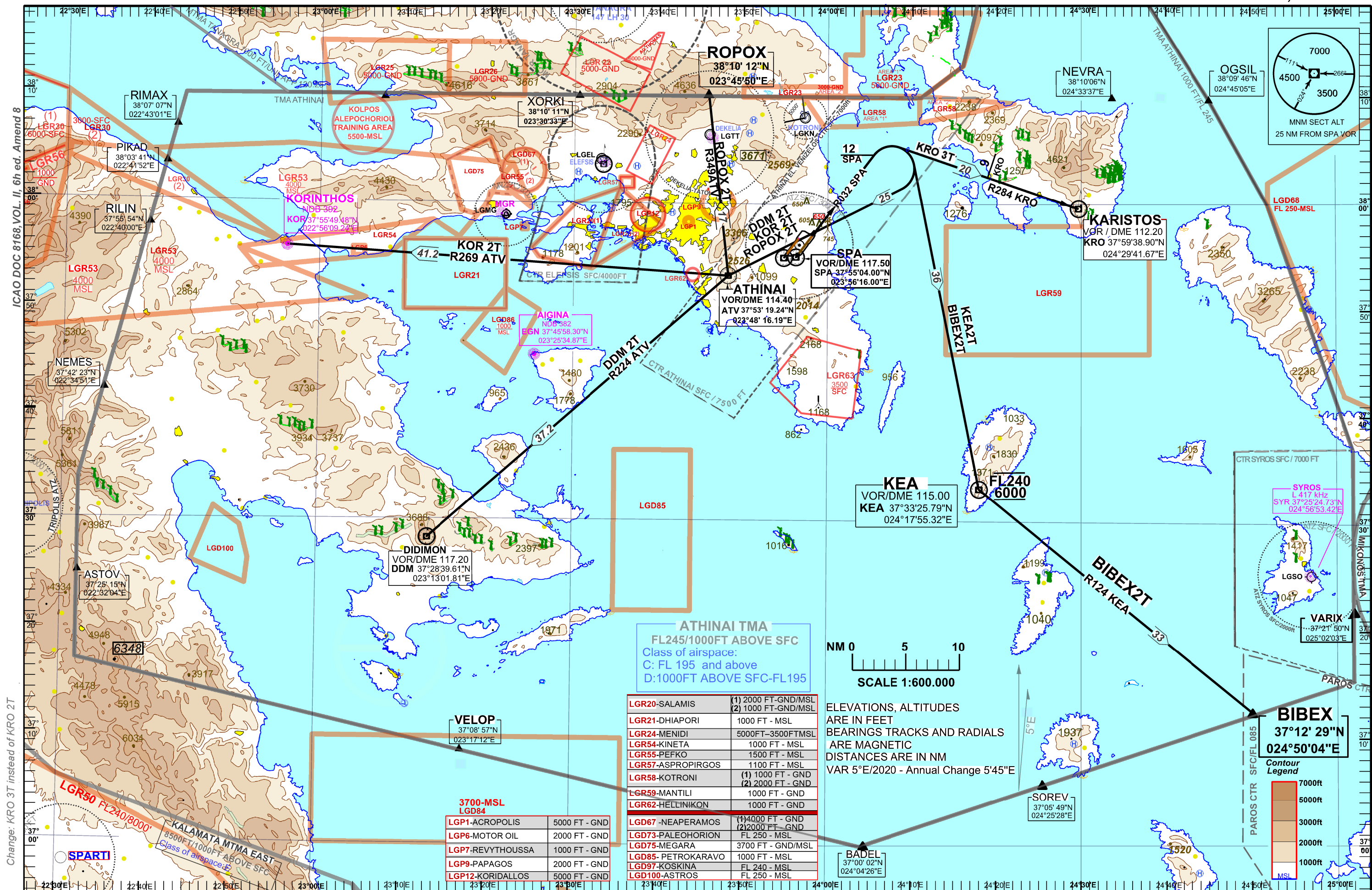


TOWER WEST	136.275	ARRIVAL WEST	132.975
TOWER EAST	118.625	ARRIVAL EAST	126.575

ATIS	136.125
------	---------



ATHINAI / “ELEFThERIOS VENIZELOS”
SIDs : SPA VOR/DME RWY 03R**KRO 3T,DDM 2T, KOR 2T, ROPOX 2T, KEA 2T,BIBEX 2T.**

DESIGNATOR	DESCRIPTION	MAXIMUM IAS / MINIMUM BANK ANGLE	PROCEDURE DESIGN GRADIENT	LEVEL RESTRICTIONS
KRO 3T	Climb on RDL032 SPA. At 12 DME SPA turn right and intercept RDL284 KRO inbound to KRO.	210kt / 20° During initial turn.	5.0 % (304ft/NM) up to 3000ft.	Nil.
DDM 2T	Climb on RDL032 SPA. At 12 DME SPA turn right inbound to ATV. Then intercept and follow RDL224 ATV inbound to DDM.	210kt / 20° During initial turn.	5.0 % (304ft/NM) up to 3000ft.	Nil.
KOR 2T	Climb on RDL032 SPA At 12 DME SPA turn right inbound to ATV. Then intercept and follow RDL269 ATV inbound to KOR.	210kt / 20° During initial turn.	5.0 % (304ft/NM) up to 3000ft.	Nil.
ROPOX 2T	Climb on RDL032 SPA. At 12 DME SPA turn right inbound to ATV. Then turn right, intercept and follow RDL349 ATV inbound to ROPOX.	210kt / 20° During initial turn.	5.0 % (304ft/NM) up to 3000ft.	Nil.
KEA 2T	Climb on RDL032 SPA. At 12 DME SPA turn right inbound to KEA.	210kt / 20° During initial turn.	5.0 % (304ft/NM) up to 3000ft.	Cross KEA between 6000ft and FL240 inclusive.
BIBEX 2T (This SID should be used for destination PAROS AIRPORT)	Climb on RDL032 SPA. At 12 DME SPA turn right inbound to KEA. At KEA turn left, intercept RDL124 KEA inbound to BIBEX.	210kt / 20° During initial turn.	5.0 % (304ft/NM) up to 3000ft.	Cross KEA between 6000ft and FL240 inclusive.