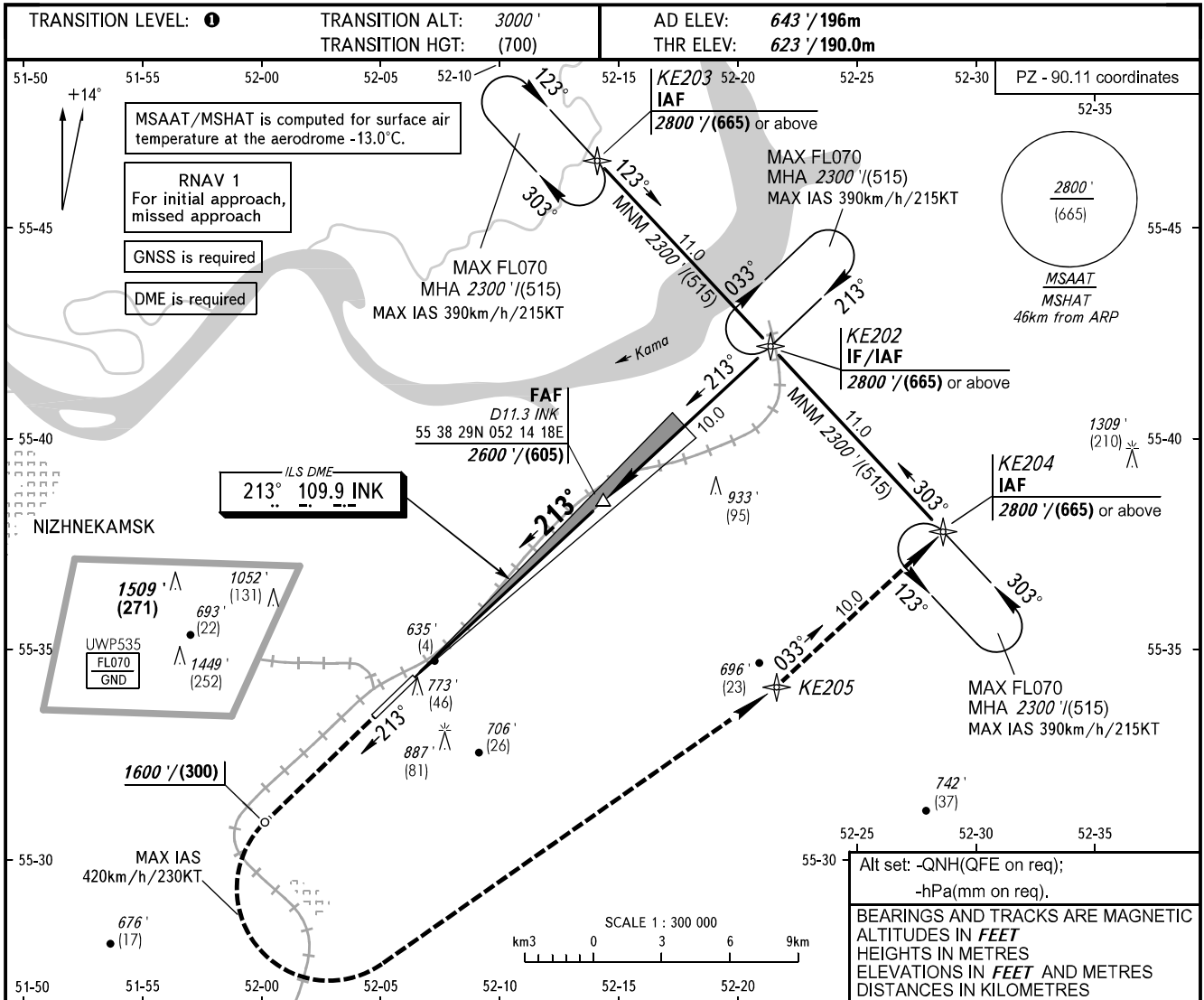


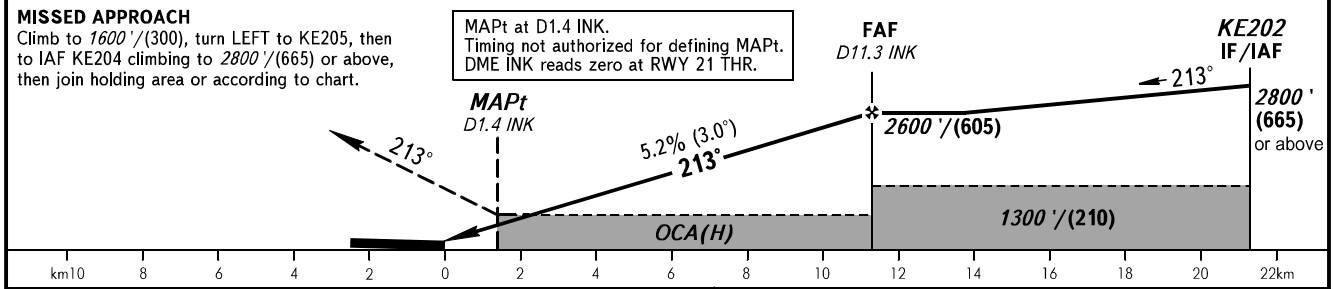
**INSTRUMENT
APPROACH
CHART - ICAO**

RADAR	127.900
TOWER	127.900
START	121.200

**NIZHNEKAMSK, RUSSIA
BEGISHEVO
LOC Z RWY 21**



DME INK	2.0	4.0	6.0	8.0	10.0
ALTITUDE	1020' / 310	1360' / 415	1700' / 520	2040' / 625	2380' / 725
HEIGHT	(400') / (120)	(740') / (225)	(1080') / (330)	(1420') / (435)	(1760') / (535)



OCA(H)		A	B	C	D	TRANSITION LEVEL:							
Straight-in Approach		910' (290') 280 (90)	910' (290') 280 (90)	910' (290') 280 (90)	910' (290') 280 (90)	- FLO40 when QNH is 1013 hPa (760mm mercury column) or above;							
						- FLO50 when QNH is 977 hPa (733mm mercury column) or above, but less than 1013 hPa (760mm mercury column);							
Circling		1070' (430') 330 (130)	1190' (540') 365 (165)	1290' (640') 395 (195)	1340' (690') 410 (210)	- FLO60 when QNH is less than 977 hPa (733mm mercury column).							
						Visual manoeuvring in sector 228° - 018° is PROHIBITED.							
GROUND SPEED	km/h		150	180	210	240	270	300	330	360	390	420	450
	kt		81	97	113	130	146	162	178	194	211	227	243
RATE OF DESCENT	m/s		2.2	2.6	3.0	3.5	3.9	4.3	4.8	5.2	5.6	6.1	6.5
	ft/min		427	512	597	682	768	853	938	1024	1109	1194	1280

CHANGE: New chart