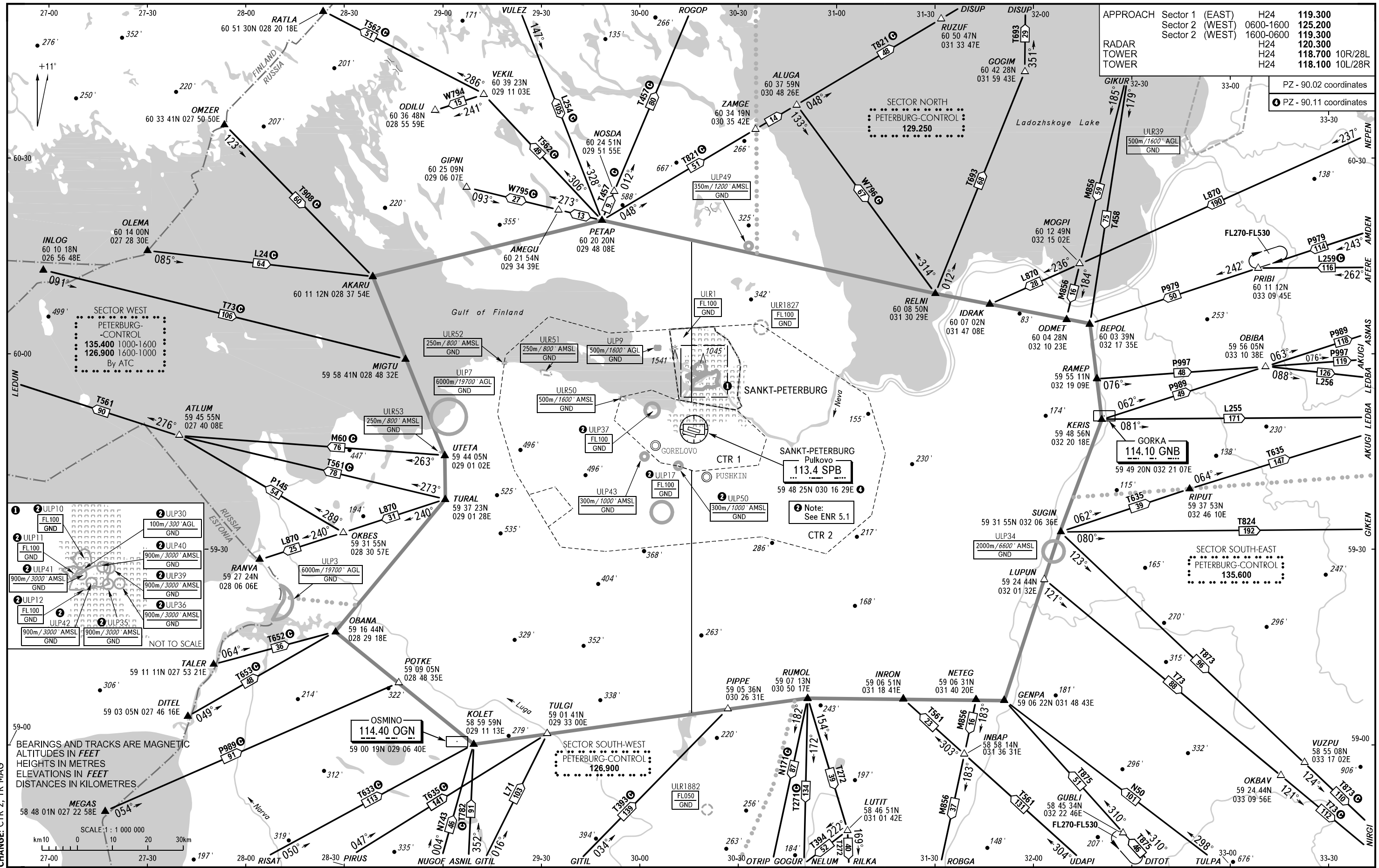


AREA CHART - ICAO

ARRIVAL, DEPARTURE
AND TRANSIT ROUTES

SANKT-PETERBURG, RUSSIA

PULKOVO



APPROACH	Sector 1 (EAST)	H24	119.300
	Sector 2 (WEST)	0600-1600	125.200
	Sector 2 (WEST)	1600-0600	119.300
RADAR TOWER		H24	120.300
		H24	118.700 10R/28L
		H24	118.100 10L/28R

PZ - 90.02 coordinates
 ① PZ - 90.11 coordinates

① ULP10 FL100 GND	② ULP30 100m/300' AGL GND
② ULP11 FL100 GND	② ULP40 900m/3000' AMSL GND
② ULP41 900m/3000' AMSL GND	② ULP39 900m/3000' AMSL GND
② ULP12 FL100 GND	② ULP36 900m/3000' AMSL GND
② ULP42 900m/3000' AMSL GND	② ULP35 900m/3000' AMSL GND

BEARINGS AND TRACKS ARE MAGNETIC
 ALTITUDES IN FEET
 HEIGHTS IN METRES
 ELEVATIONS IN FEET
 DISTANCES IN KILOMETRES

SCALE 1 : 1 000 000

km 10 0 10 20 30km