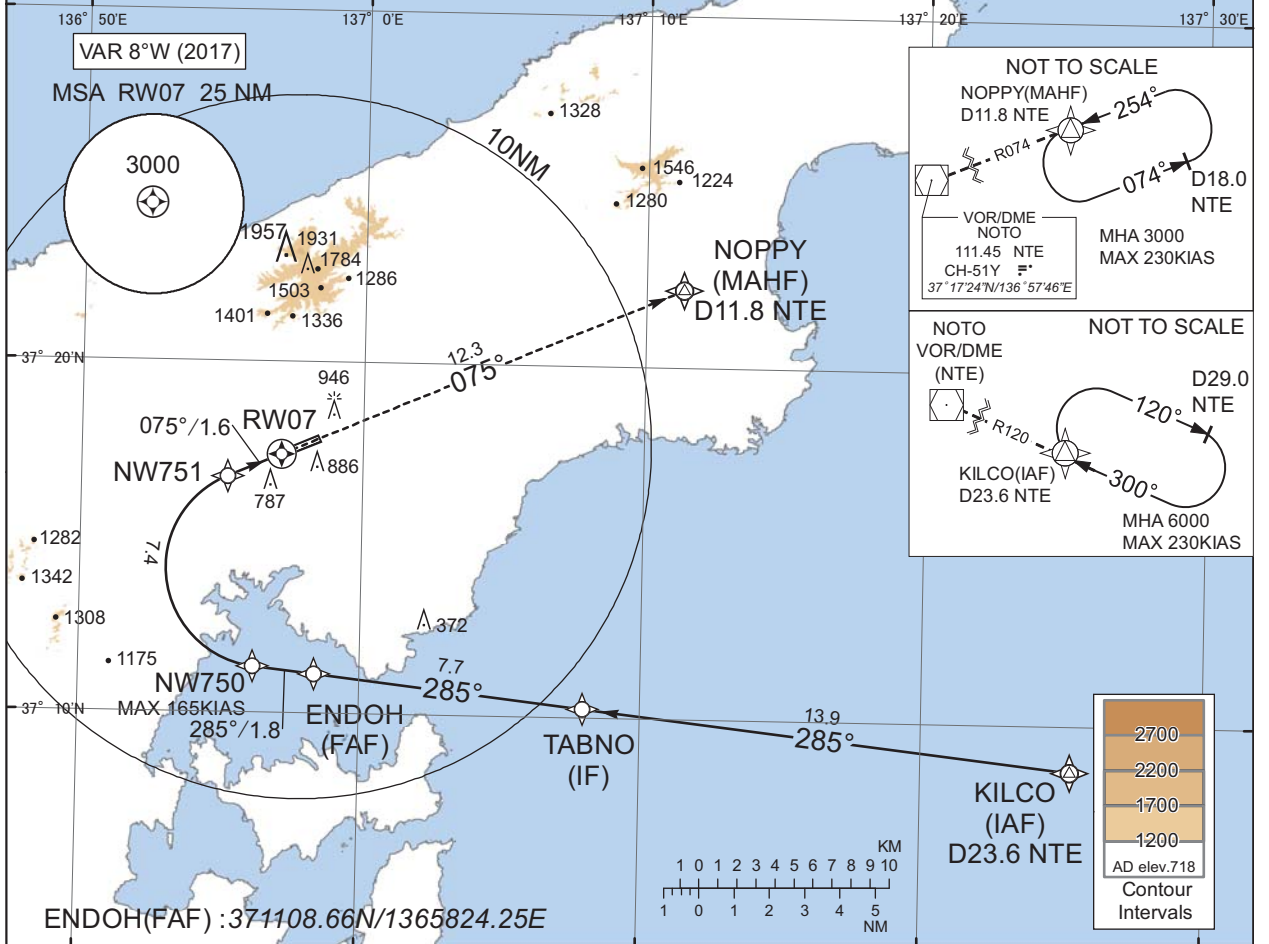


INSTRUMENT APPROACH CHART

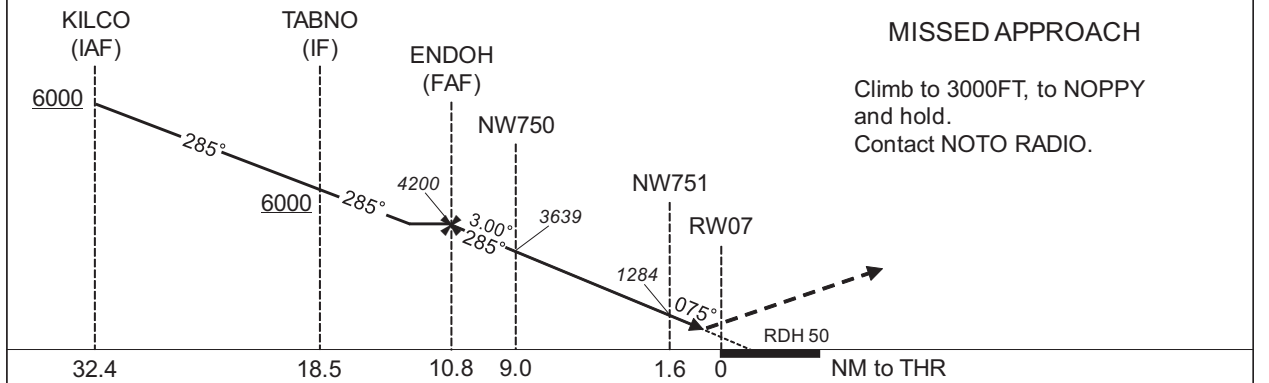
RJNW / NOTO RNP Z RWY07(AR)

<b>KOBE CONTROL</b> 132.45 - 125.6 304.4 - 317.1	<b>RNP AR</b> RF required.	<b>NOTO RADIO</b> 118.05 AFIS provided by Osaka Airport Office	<b>NO RADAR</b>
--	-------------------------------	---	-----------------

For uncompensated Baro-VNAV systems, procedure not authorized below -10°C / above 45°C



CHANGE : ATC call sign (TOKYO CONTROL → KOBE CONTROL).



Missed APCH climb gradient MNM 3.2%

	MINIMA	THR elev. 710	AD elev. 718
CAT	RNP 0.30		
	DA(H)		
A	-		
B	-		
C	1010(300)	1400	
D	1010(300)	1600	

Authorization Required

MINIMA with Missed APCH climb gradient of 2.5% are not established.

## INSTRUMENT APPROACH CHART

RJNW / NOTO

RNP Z RWY07(AR)

Coding Table

Serial Number	Path Descriptor	Waypoint Identifier	Fly Over	Course °M(°T)	Magnetic Variation	Distance (NM)	Turn Direction	Altitude (FT)	Speed (KIAS)	VPA/RDH (°/FT)	RNP Value
001	IF	KILCO	-	-	-8.3	-	-	+6000	-	-	-
002	TF	TABNO	-	285 (276.6)	-8.3	13.9	-	+6000	-	-	1.0
003	TF	ENDOH	-	285 (276.4)	-8.3	7.7	-	4200	-	-	1.0
004	TF	NW750	-	285 (276.3)	-8.3	1.8	-	3639	-165	-3.00	0.3
005	RF Center: NWRF1 r=2.82NM	NW751	-	-	-8.3	7.4	R	1284	-	-3.00	0.3
006	TF	RW07	Y	075 (066.6)	-8.3	1.6	-	760	-	-3.00/50	0.3
007	TF	NOPPY	-	075 (066.7)	-8.3	12.3	-	3000	-	-	1.0

Waypoint Coordinates

Waypoint Identifier	Coordinates	RF Arc Center Identifier	Coordinates
KILCO	370843.05N / 1372519.77E	NWRF1	371408.38N / 1365636.03E
TABNO	371017.61N / 1370758.59E		
ENDOH	371108.66N / 1365824.25E		
NW750	371120.22N / 1365612.92E		
NW751	371643.80N / 1365512.45E		
RW07	371722.92N / 1365706.38E		
NOPPY	372214.69N / 1371120.01E		

CHANGE : PROC renamed.