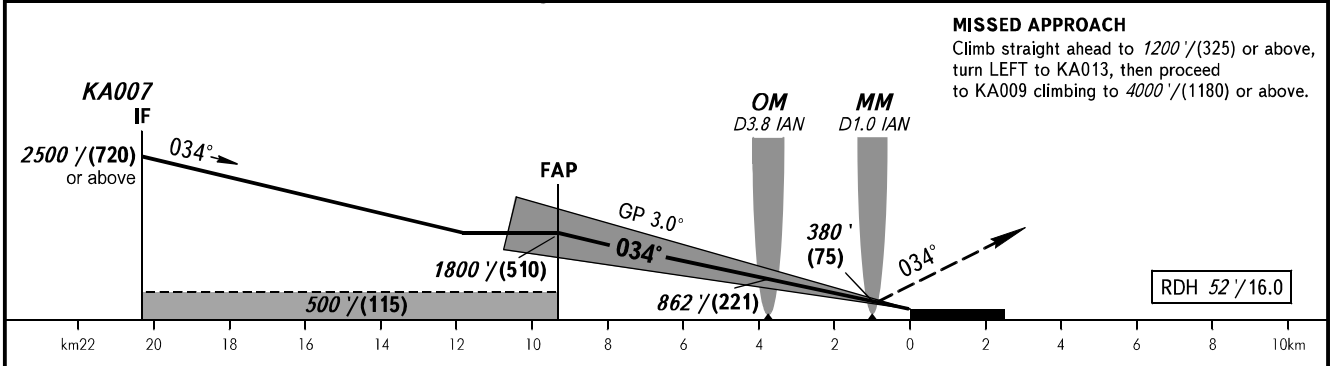
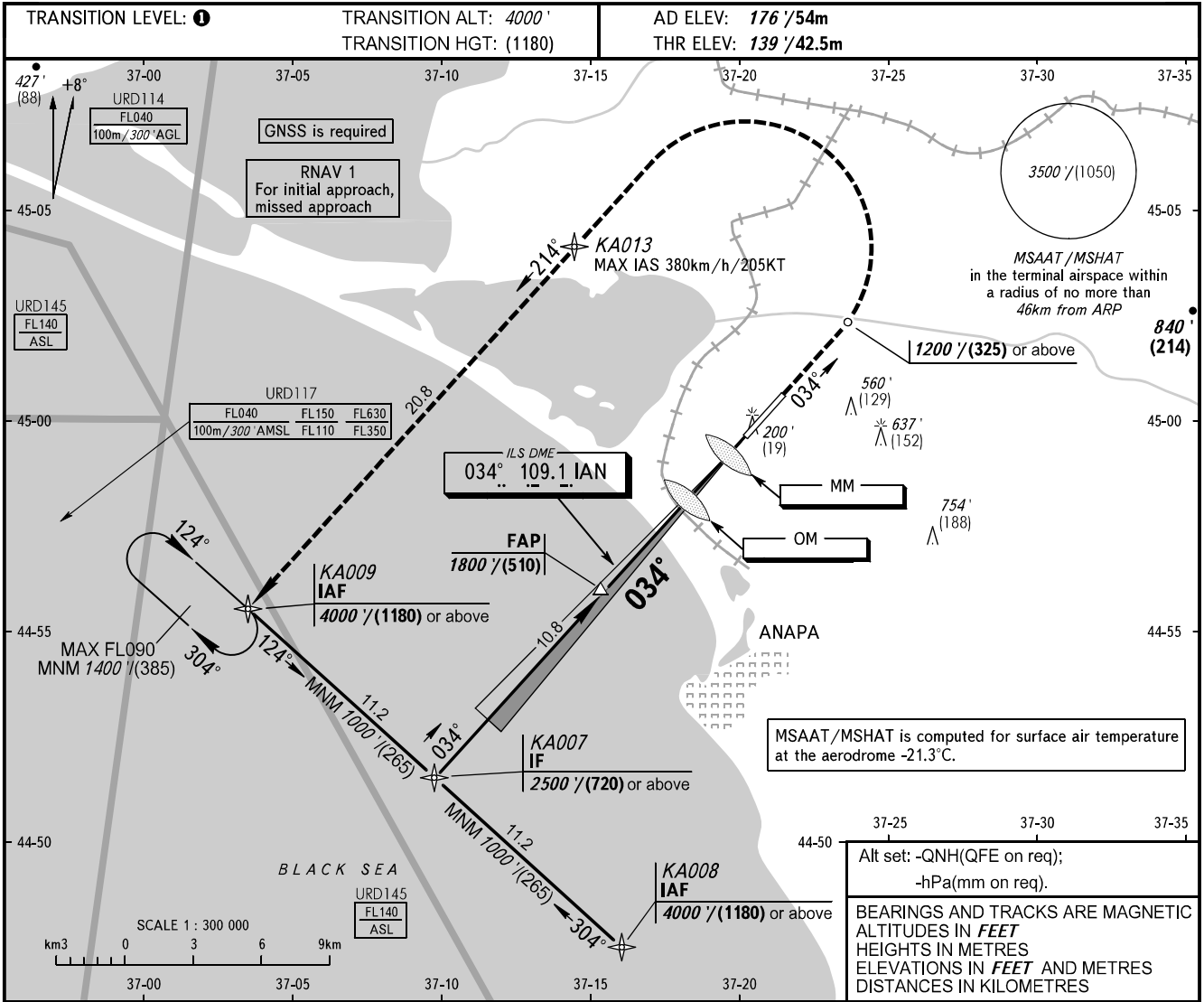


**INSTRUMENT
APPROACH
CHART - ICAO**

ANAPA RADAR 118.700
ANAPA TOWER 119.800

**ANAPA, RUSSIA
VITYAZEVO
ILS Z CAT I RWY 03**



OCA(H)		A	B	C	D						
Straight-in	CAT I	282' (143') (44)	291' (152') (47)	302' (163') (50)	315' (176') (54)						
	Approach										
Circling		860' (680') (210)	940' (760') (235)	1040' (860') (265)	1150' (980') (300)						
GROUND SPEED		km/h	150	180	210	240	270	300	330	360	390
RATE OF DESCENT		kt	81	97	113	130	146	162	178	194	211
		m/s	2.2	2.6	3.0	3.5	3.9	4.3	4.8	5.2	5.6
		ft/min	427	512	597	682	768	853	938	1024	1109

TRANSITION LEVEL:
- FL050 when QNH is 1013 hPa (760mm mercury column) or above;
- FL060 when QNH is 977 hPa (733mm mercury column) or above, but less than 1013 hPa (760mm mercury column);
- FL070 when QNH is less than 977 hPa (733mm mercury column).

WARNING
Zero range of DME IAN is indicated at RWY 03 THR.

CHANGE: URD145