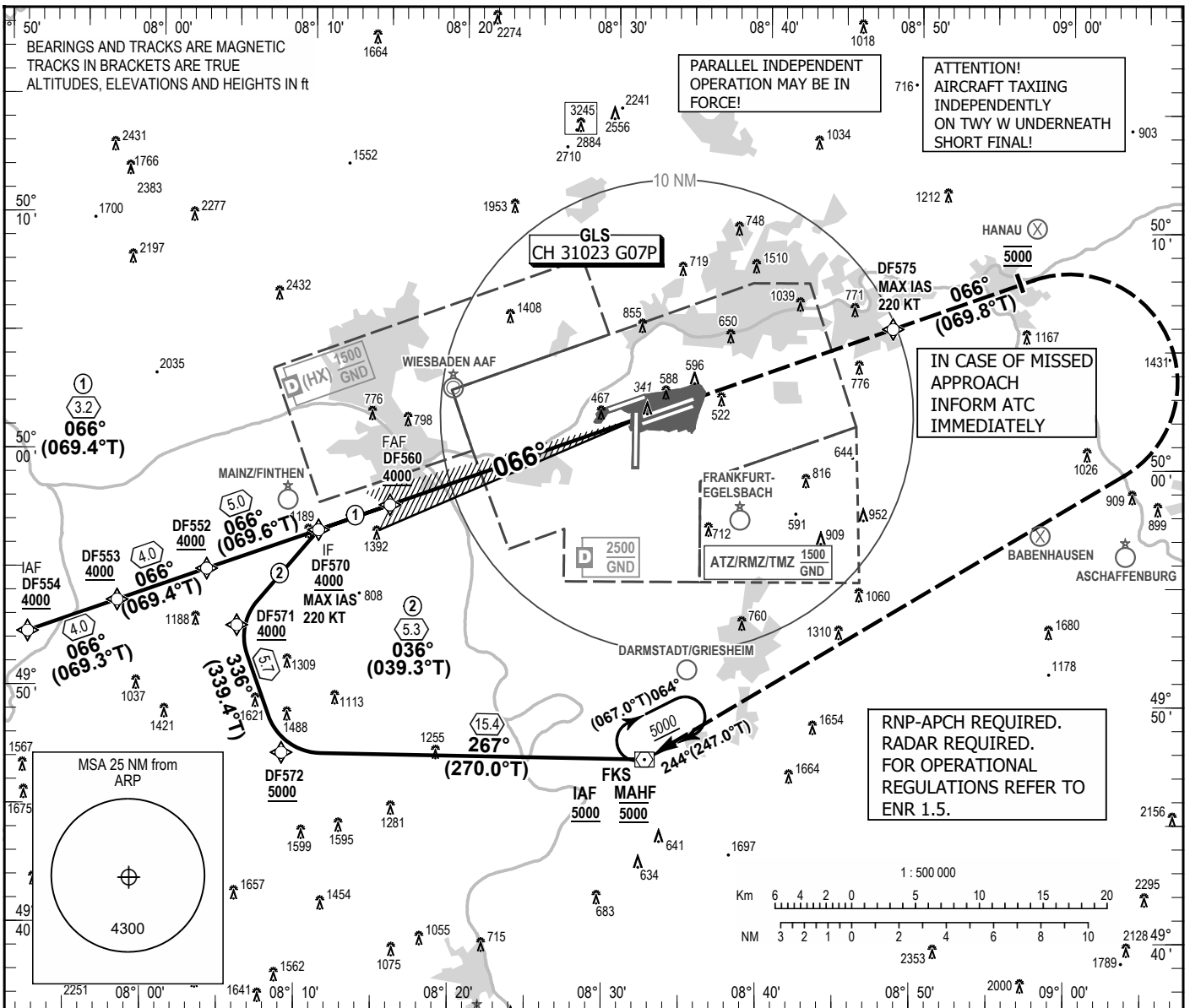


INSTRUMENT APPROACH
CHART - ICAO

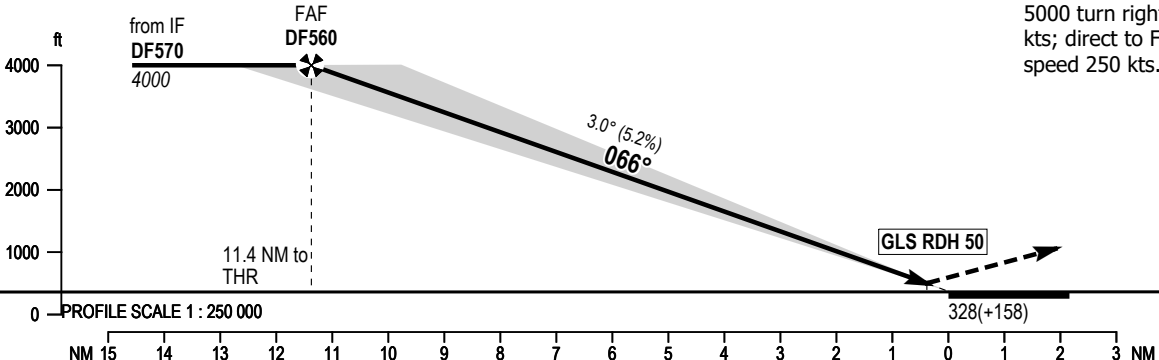
VAR 3° E
ELEV 363
OCH RELATED TO THR 07C ELEV 328

| | | | |
|-------------------|---------|------------------|---------|
| FRANKFURT ATIS | 118.030 | FRANKFURT TOWER | 119.905 |
| LANGEN RADAR | 120.805 | FRANKFURT GROUND | 121.805 |
| LANGEN RADAR | 125.355 | FRANKFURT APRON | 121.755 |
| FRANKFURT ARRIVAL | 127.280 | FRANKFURT APRON | 121.955 |
| FRANKFURT TOWER | 118.780 | FRANKFURT APRON | 121.855 |

FRANKFURT MAIN
GLS Z CAT I & II
RWY 07C



MISSED APPROACH PROCEDURE
Direct to DF575, max. speed 220 kts; climb on course 066°, at 5000 turn right, max. speed 220 kts; direct to FKS at 5000, max. speed 250 kts.



| OCA (OCH) | A | B | C | D | DL |
|------------|--------------|--------------|--------------|--------------|--------------|
| GLS CAT I | 470 (142) | 483 (155) | 491 (163) | 501 (173) | 501 (173) |
| GLS CAT II | 382 (54) | 400 (72) | 412 (84) | 426 (98) | 426 (98) |

| DIST THR | 11 | 10 | 9 | 8 | 7 | 6 | 5 | 4 | 3 | 2 |
|----------|------|------|------|------|------|------|------|------|------|------|
| ALTITUDE | 3890 | 3570 | 3250 | 2930 | 2610 | 2290 | 1980 | 1660 | 1340 | 1020 |

| GS | kt | 80 | 100 | 120 | 140 | 160 | 180 |
|------------------------|---------|------|------|------|------|------|------|
| DF560 - THR (11.4 NM) | MIN:SEC | 8:32 | 6:49 | 5:41 | 4:52 | 4:16 | 3:47 |
| Rate of descent (5.2%) | ft/MIN | 420 | 530 | 640 | 740 | 850 | 960 |

Correction: Callsign.