

STANDARD DEPARTURE CHART - INSTRUMENT

RJAW / IWOTO

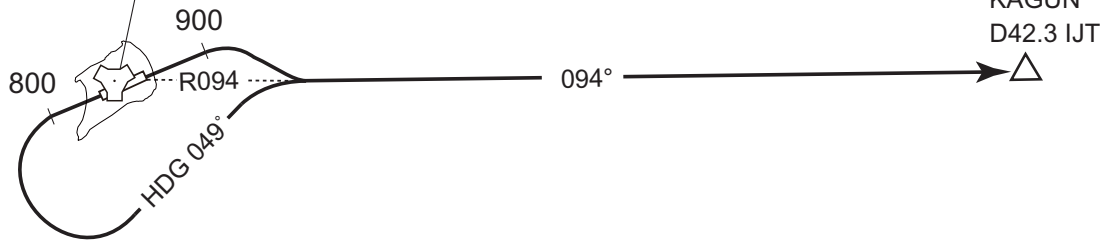
SID

KAGUN ONE DEPARTURE

RWY 07 : Climb RWY HDG to 900FT, via IJT R094 to KAGUN.

RWY 25 : Climb RWY HDG to 800FT, turn left HDG049° to intercept and proceed via IJT R094 to KAGUN.

TACAN
IWOTO
996 IJT
CH-35X ---
24°47'04"N 141°18'57"E
400FT



CHANGE : New PROC.