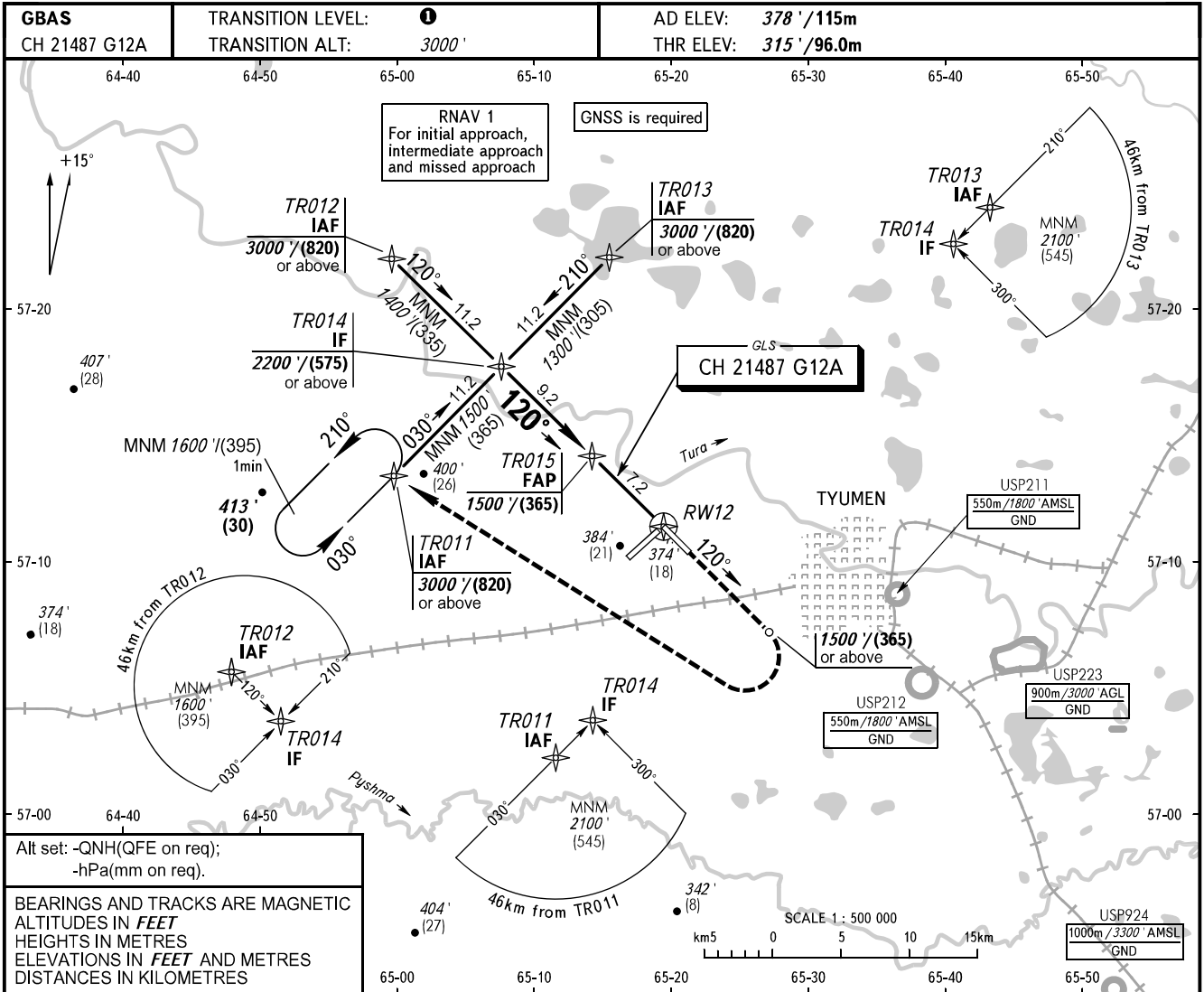


**INSTRUMENT  
APPROACH  
CHART - ICAO**

RADAR	126.100
START	118.200

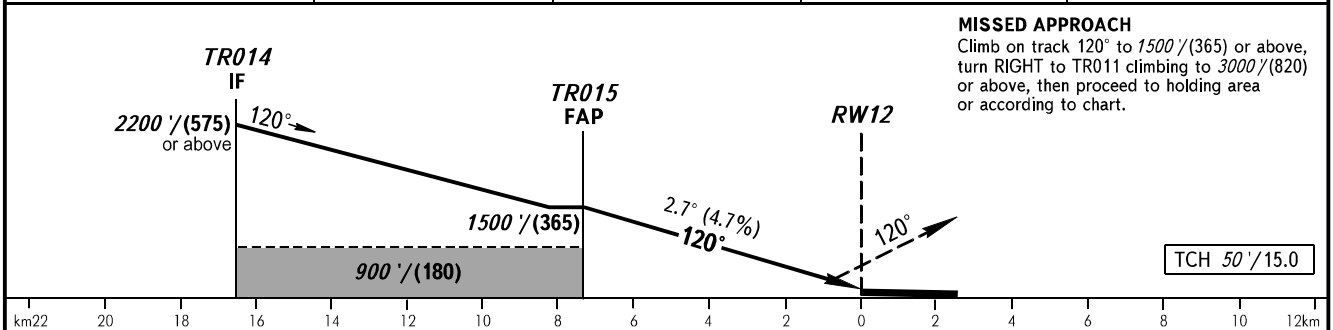
**TYUMEN, RUSSIA  
ROSHCHINO  
GLS RWY 12**



Alt set: -QNH(QFE on req);  
-hPa(mm on req).

BEARINGS AND TRACKS ARE MAGNETIC  
ALTITUDES IN FEET  
HEIGHTS IN METRES  
ELEVATIONS IN FEET AND METRES  
DISTANCES IN KILOMETRES

DIST to RW12	7.0	6.0	4.0	2.0
ALTITUDE	1445'	1291'	982'	674'



**MISSED APPROACH**  
Climb on track 120° to 1500'/(365) or above, turn RIGHT to TR011 climbing to 3000'/(820) or above, but less than 1013 hPa (760mm mercury column); or above, then proceed to holding area or according to chart.

OCA(H)		A	B	C	D	① TRANSITION LEVEL:										
Straight-in Approach	CAT I	504' (189')	517' (202')	525' (210')	535' (220')	- FL040 when QNH is 1013 hPa (760mm mercury column) or above;										
		(58)	(62)	(64)	(70)	- FL050 when QNH is 977 hPa (733mm mercury column) or above, but less than 1013 hPa (760mm mercury column);										
Circling		780' (410')	870' (500')	970' (600')	1070' (690')	- FL060 when QNH is less than 977 hPa (733mm mercury column).										
GROUND SPEED		km/h	150	180	210	240	270	300	330	360	390	420	450			
RATE OF DESCENT		m/s	1.9	2.3	2.7	3.1	3.5	3.9	4.3	4.7	5.0	5.4	5.8			
		ft/min	374	453	532	610	689	768	847	925	984	1063	1142			