

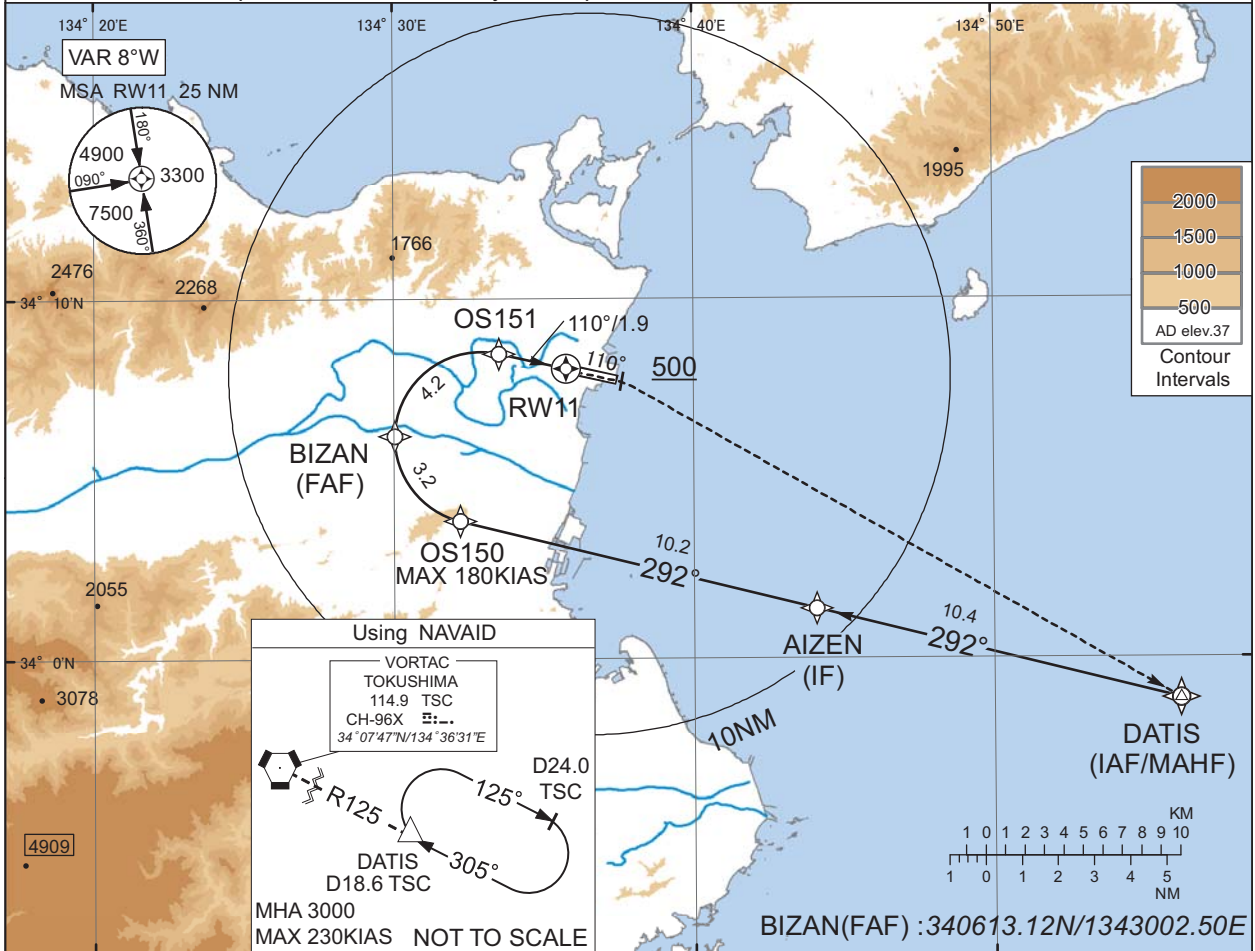
INSTRUMENT APPROACH CHART

RJOS / TOKUSHIMA

RNP Z RWY11(AR)

TOKUSHIMA APP 120.1 - 124.0 261.2 - 284.6	RNP AR RF required.	TOKUSHIMA TOWER 118.0 - 126.2 233.8 - 236.8	GCA AVBL CALL TOKUSHIMA APP
---	------------------------	---	-----------------------------------

For uncompensated Baro-VNAV systems, procedure not authorized below -5°C / above 45°C



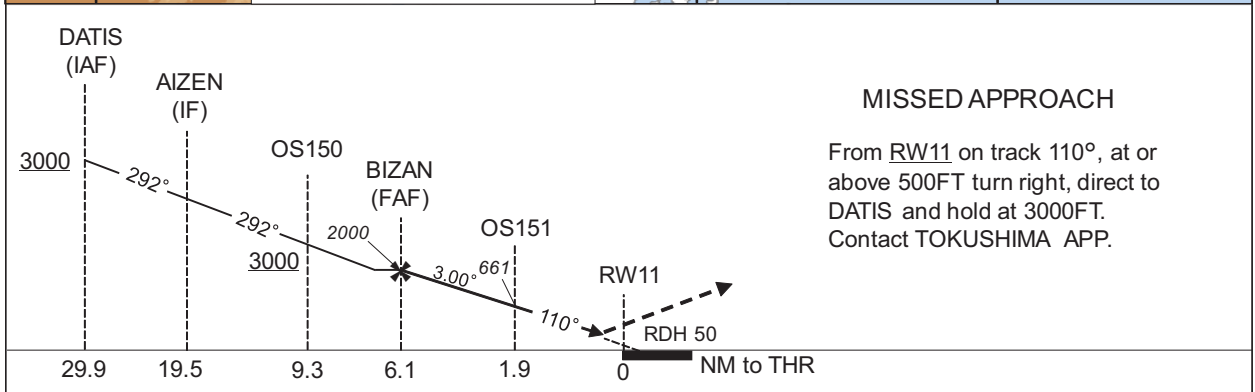
Using NAVAID

VORTAC
TOKUSHIMA
114.9 TSC
CH-96X
34°07'47"N/134°36'31"E

D24.0 TSC
R125
125°

DATIS
D18.6 TSC
305°

MHA 3000
MAX 230KIAS NOT TO SCALE



MISSED APPROACH

From RW11 on track 110°, at or above 500FT turn right, direct to DATIS and hold at 3000FT. Contact TOKUSHIMA APP.

Missed APCH climb gradient MNM 5.0%

MINIMA	THR elev. 6		AD elev. 37	
	RNP 0.15		RNP 0.30	
CAT	DA(H)	CMV	DA(H)	CMV
A	-	-	-	-
B	-	-	-	-
C	306(300)	1400	362(356)	1400
D	306(300)	1600	362(356)	1600

MINIMA with Missed APCH climb gradient of 2.5% are not established.

Authorization Required

CHANGE : Description of VAR.

INSTRUMENT APPROACH CHART

RJOS / TOKUSHIMA

RNP Z RWY11(AR)

Coding Table

Serial Number	Path Descriptor	Waypoint Identifier	Fly Over	Course °M(°T)	Magnetic Variation	Distance (NM)	Turn Direction	Altitude (FT)	Speed (KIAS)	VPA/RDH (°/FT)	RNP Value
001	IF	DATIS	-	-	-7.8	-	-	+3000	-	-	-
002	TF	AIZEN	-	292 (284.2)	-7.8	10.4	-	-	-	-	1.0
003	TF	OS150	-	292 (284.1)	-7.8	10.2	-	+3000	-180	-	0.3
004	RF Center: OSRF2 r=2.38NM	BIZAN	-	-	-7.8	3.2	R	2000	-	-	0.3
005	RF Center: OSRF2 r=2.38NM	OS151	-	-	-7.8	4.2	R	661	-	-3.00	0.15 0.30
006	TF	RW11	Y	110 (102.6)	-7.8	1.9	-	56	-	-3.00/50	0.15 0.30
007	FA	-	-	110 (102.6)	-7.8	-	-	+500	-	-	1.0
008	DF	DATIS	-	-	-7.8	-	R	3000	-	-	1.0

Waypoint Coordinates

Waypoint Identifier	Coordinates	RF Arc Center Identifier	Coordinates
DATIS	335851.96N / 1345613.14E	OSRF2	340610.26N / 1343254.26E
AIZEN	340123.97N / 1344405.59E		
OS150	340351.55N / 1343212.95E		
BIZAN	340613.12N / 1343002.50E		
OS151	340829.79N / 1343331.39E		
RW11	340804.98N / 1343545.74E		

CHANGE : PROC renamed.