

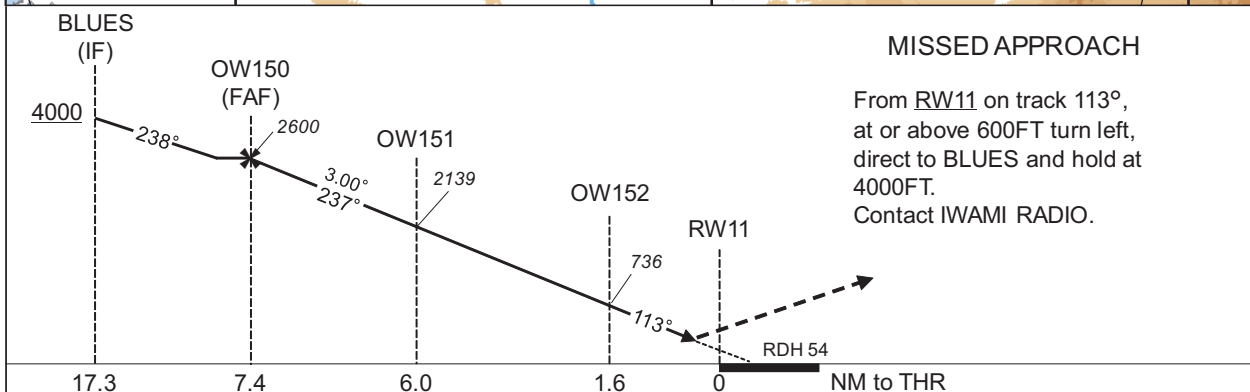
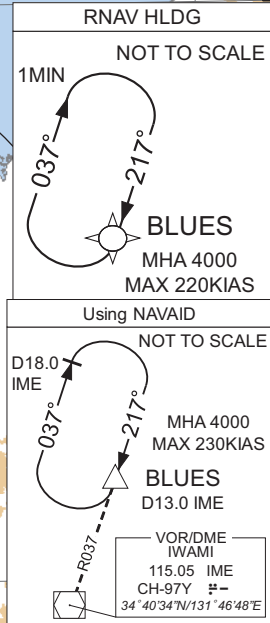
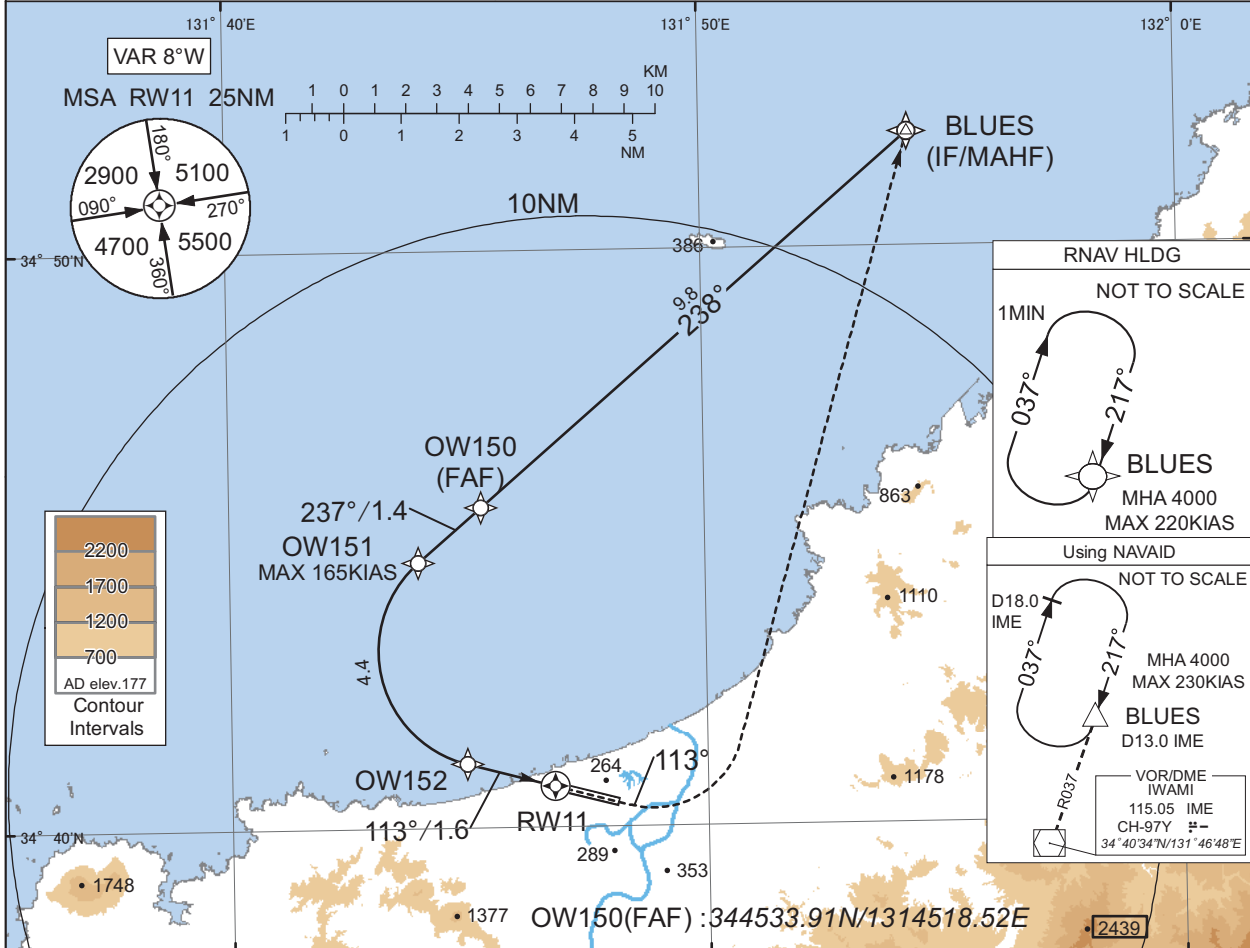
INSTRUMENT APPROACH CHART

RJOW / IWAMI

RNP RWY11(AR)

KOBE CONTROL 132.5 - 246.1 134.25 - 315.5	RNP AR RF required.	IWAMI RADIO 122.2 AFIS provided by Osaka Airport Office	NO RADAR
---	------------------------	--	----------

For uncompensated Baro-VNAV systems, procedure not authorized below -5°C / above 45°C



**MISSED APPROACH**  
 From RW11 on track 113°, at or above 600FT turn left, direct to BLUES and hold at 4000FT.  
 Contact IWAMI RADIO.

Missed APCH climb gradient MNM 5.0%

MINIMA	THR elev. 184	AD elev. 177
CAT	RNP 0.30	
	DA(H)	RVR/CMV
A	-	-
B	-	-
C	484(300)	1000
D	-	-

**Authorization Required**

MINIMA with Missed APCH climb gradient of 2.5% are not established.

CHANGE : HLDG course for using NAVAID.

INSTRUMENT APPROACH CHART

RJOW / IWAMI

RNP RWY11(AR)

Coding Table

Serial Number	Path Descriptor	Waypoint Identifier	Fly Over	Course °M(°T)	Magnetic Variation	Distance (NM)	Turn Direction	Altitude (FT)	Speed (KIAS)	VPA/ RDH (°/FT)	RNP Value
001	IF	BLUES	-	-	-8.2	-	-	+4000	-	-	1.0
002	TF	OW150	-	238 (229.3)	-8.2	9.8	-	2600	-	-	1.0
003	TF	OW151	-	237 (229.2)	-8.2	1.4	-	2139	-165	-3.00	0.3
004	RF Center: OWRF1 r=2.03NM	OW152	-	-	-8.2	4.4	L	736	-	-3.00	0.3
005	TF	RW11	Y	113 (104.8)	-8.2	1.6	-	238	-	-3.00/54	0.3
006	FA	-	-	113 (104.8)	-8.2	-	-	+600	-	-	1.0
007	DF	BLUES	-	-	-8.2	-	L	4000	-	-	1.0

Path	Waypoint Identifier	Inbound Course °M(°T)	Magnetic Variation	Outbound Time (MIN)	Turn Direction	Minimum Altitude (FT)	Maximum Altitude (FT)	Speed (KIAS)	RNP Value
Hold	BLUES	217 (208.7)	-8.2	1.0 (-13000)	R	4000	13000	-220 (-13000)	1.0

Waypoint Coordinates

Waypoint Identifier	Coordinates	RF Arc Center Identifier	Coordinates
BLUES	345159.02N / 1315423.09E	OWRF1	344304.90N / 1314534.53E
OW150	344533.91N / 1314518.52E		
OW151	344437.18N / 1314358.51E		
OW152	344107.26N / 1314456.99E		
RW11	344043.28N / 1314647.11E		

CHANGE : VAR. Course FM BLUES to OW150. RNAV HLDG established.