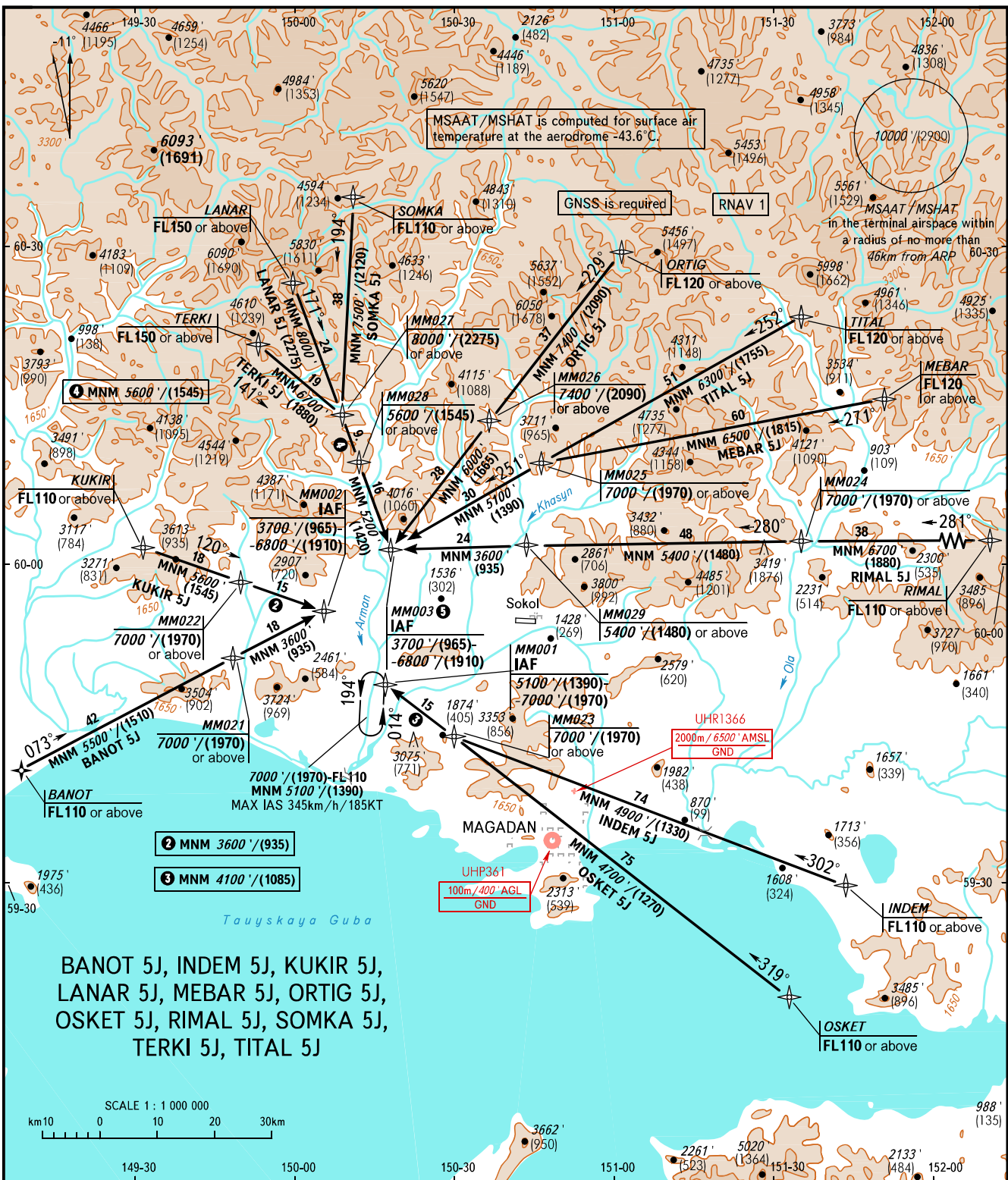


STANDARD ARRIVAL CHART
INSTRUMENT (STAR) - ICAO

TRANSITION
LEVEL: ①

MAGADAN, RUSSIA
SOKOL
RNAV RWY 10



BANOT 5J, INDEM 5J, KUKIR 5J,
LANAR 5J, MEBAR 5J, ORTIG 5J,
OSKET 5J, RIMAL 5J, SOMKA 5J,
TERKI 5J, TITAL 5J

APPROACH TOWER 119.300
120.800

- ① TRANSITION LEVEL:
- FL110 when QNH is 1013 hPa (760mm mercury column) or above;
 - FL120 when QNH is 977 hPa (733mm mercury column) or above but less than 1013 hPa (760mm mercury column);
 - FL130 when QNH is less than 977 hPa (733mm mercury column).

- ② WARNING
ALT/HGT at IAF MM003:
- 5200'/(1420)-6800'/(1910) for LANAR 5J, SOMKA 5J, TERKI 5J;
 - 6000'/(1665)-6800'/(1910) for ORTIG 5J;
 - 5100'/(1390)-6800'/(1910) for MEBAR 5J, TITAL 5J.

BEARINGS AND TRACKS ARE MAGNETIC
ALTITUDES IN FEET
HEIGHTS IN METRES
ELEVATIONS IN FEET AND METRES
DISTANCES IN KILOMETRES

Alt set: -QNH(QFE on req);
-hPa(mm on req).

CHANGE: New chart