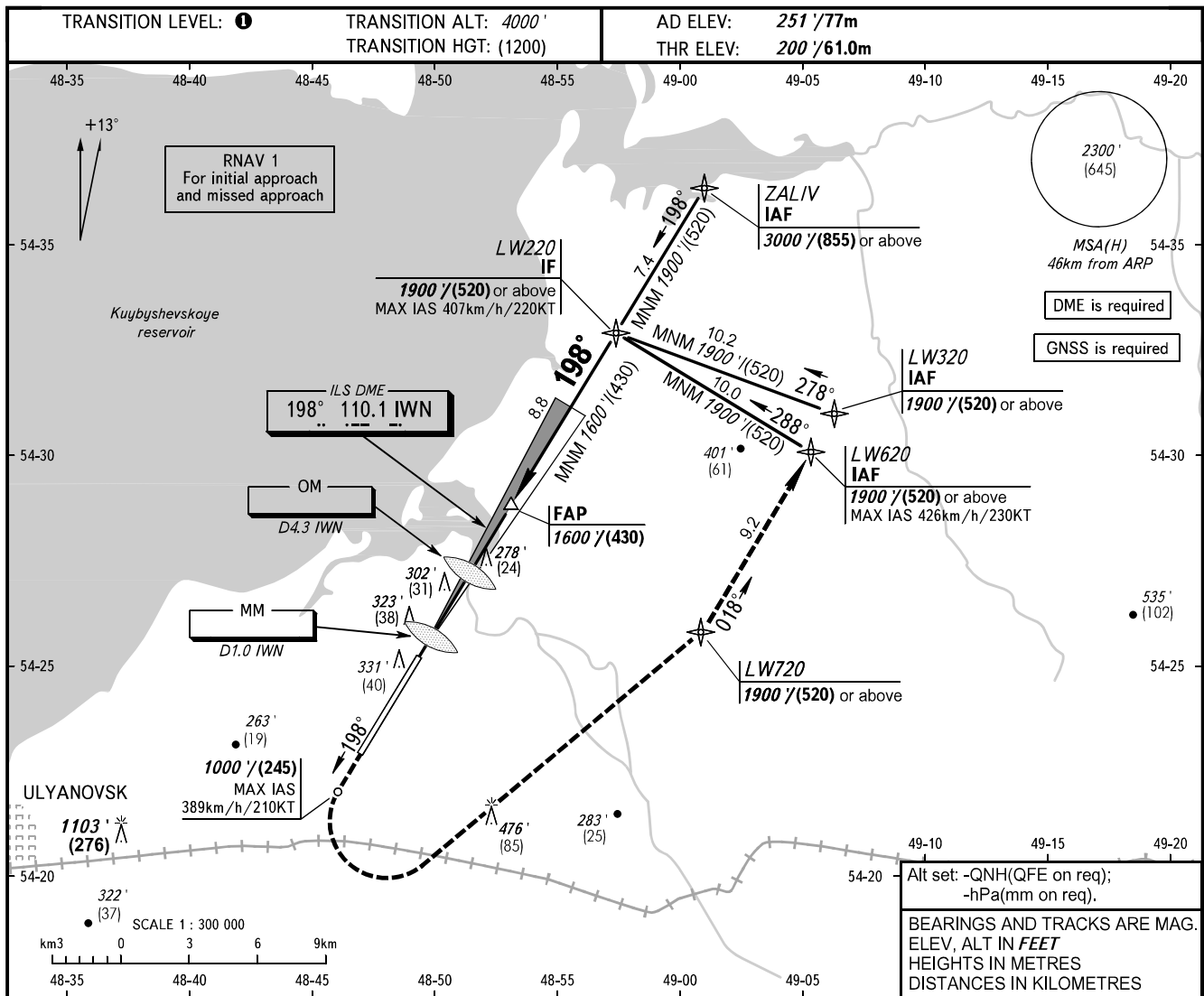


**INSTRUMENT
APPROACH
CHART - ICAO**

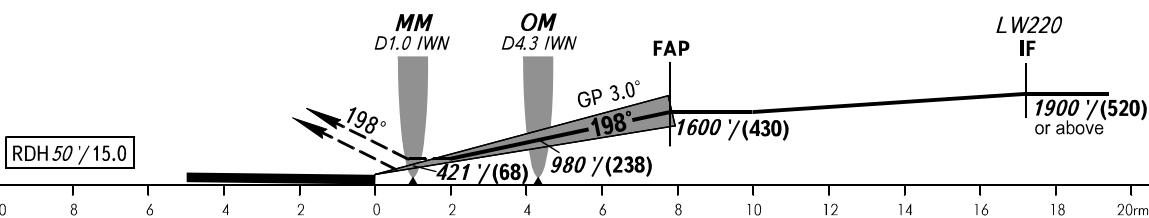
VOSTOCHNY TOWER 124.200

ULYANOVSK, RUSSIA
VOSTOCHNY
ILS Z CAT I RWY 20



MISSED APPROACH

Climb straight ahead to 1000' (245), turn LEFT to LW720 climbing to 1900' (520) or above, then to LW620 or as instructed by ATC.



OCA(H)		A	B	C	D							
Straight-in	CAT I	339' (139')	346' (146')	357' (157')	366' (166')							
		(43)	(45)	(48)	(51)							
Approach												
Circling		680' (420')	750' (500')	870' (600')	950' (700')							
		(135)	(155)	(190)	(215)							
GROUND SPEED		km/h		150	180	210	240	270	300	330	360	390
		kt		81	97	113	130	146	162	178	194	211
RATE OF DESCENT		m/s		2.2	2.6	3.0	3.5	3.9	4.3	4.8	5.2	5.6
		ft/min		427	512	597	682	768	853	938	1024	1109

TRANSITION LEVEL:
- FL050 when QNH is 977 hPa (733mm mercury column) or above;
- FL060 when QNH is less than 977 hPa (733mm mercury column).

WARNING:
1. Visual manoeuvring north-west of the aerodrome is PROHIBITED.
2. Zero range of DME IWN is indicated at RWY 20 THR.