

Akureyri SID RWY 01 - AKI 1F

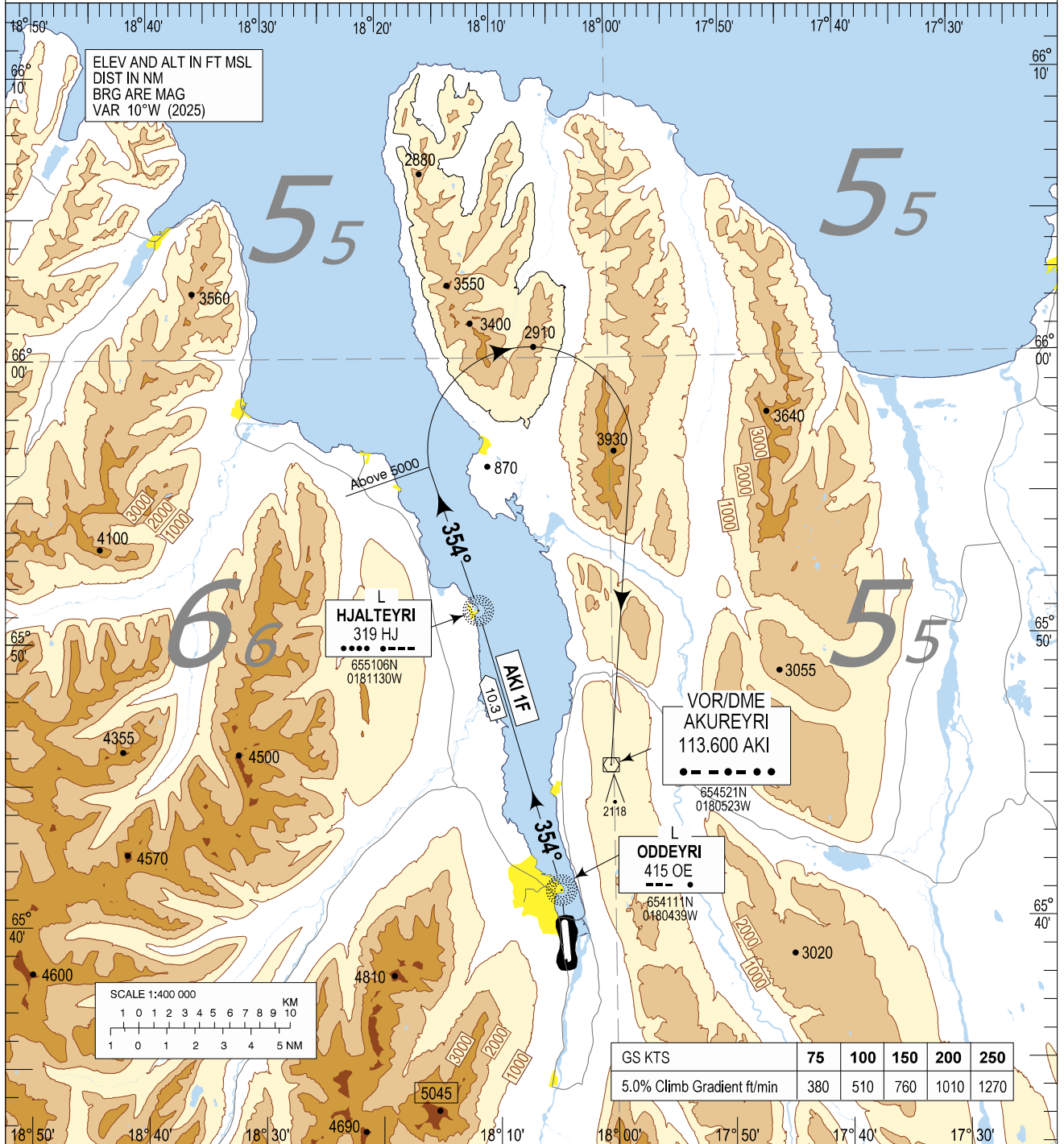
STANDARD DEPARTURE CHART -
INSTRUMENT (SID) - ICAO

TRANSITION
ALTITUDE 7000
AD ELEV 7

AKUREYRI TWR / APP	118.200
REYKJAVIK ACC	119.700
ATIS	136.200

BIAR - AKUREYRI

SID RWY 01
AKI 1F



CHANGES : REVISED PROCEDURE

DESIGNATOR	ROUTING	RESTRICTIONS	After Take-off	
			Climb to	Contact
AKI 1F	Climb course 006° to OE L. Then left turn on track 354° to HJ L. Continue on course 354° from HJ L until passing 5000ft. Turn right direct AKI VOR.	A MNM climb gradient 5.0% i.e. 304ft/NM is required to 5000 FT	As cleared by ATC	Reykjavik Control 119.700 when Instructed

THIS PAGE INTENTIONALLY LEFT BLANK