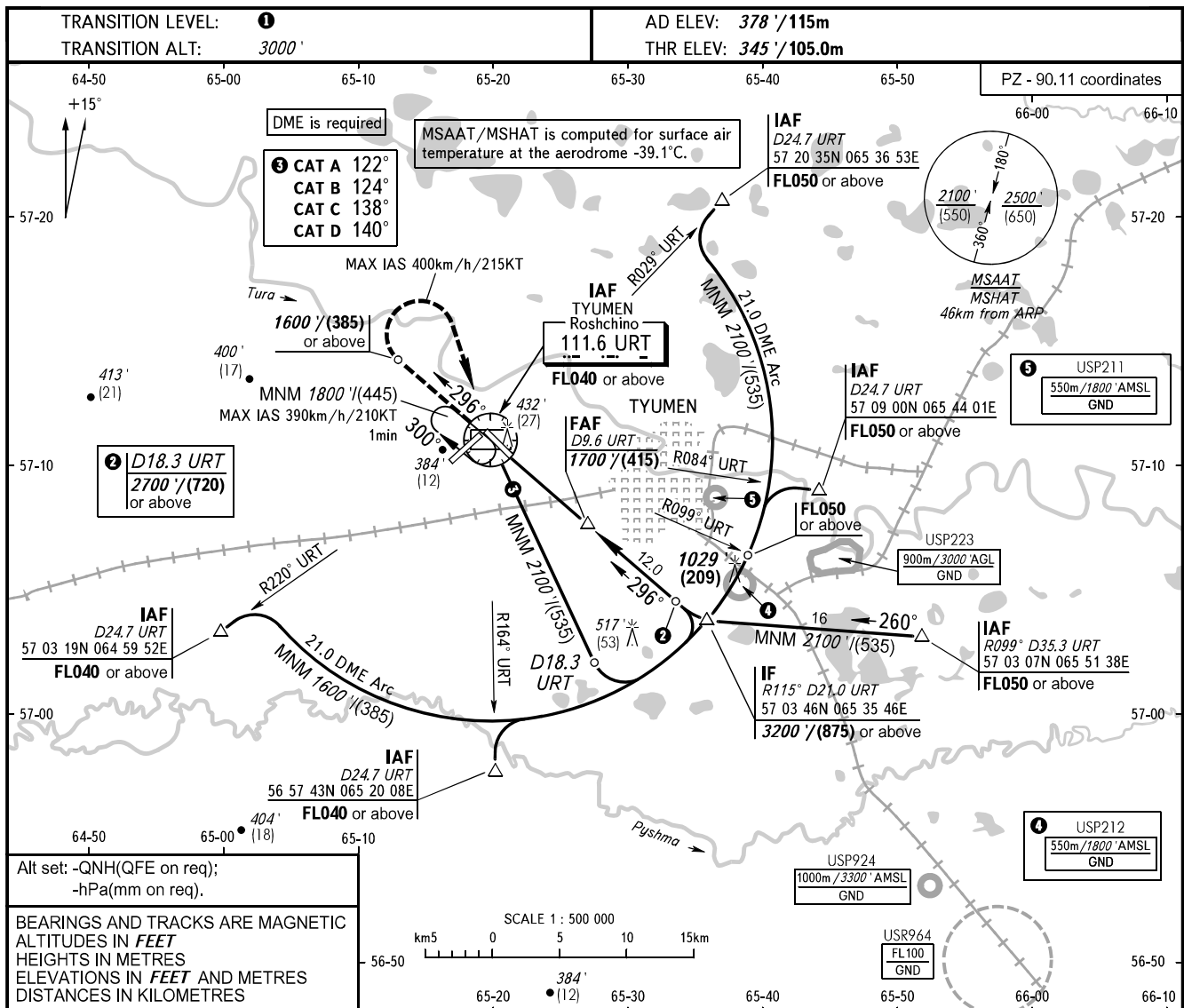


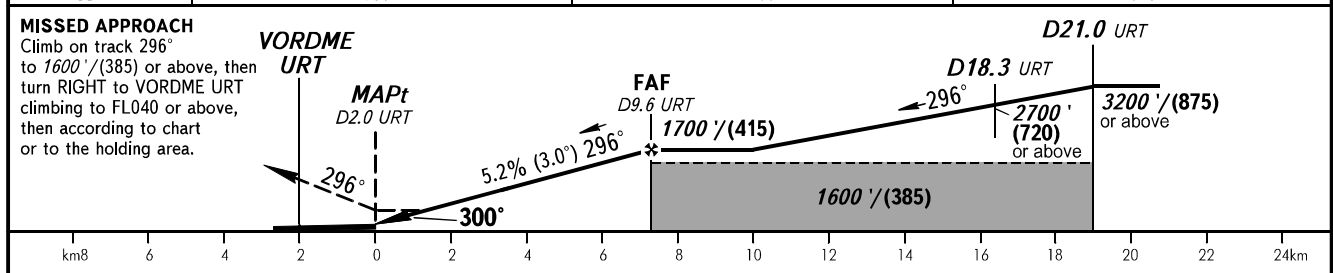
**INSTRUMENT
APPROACH
CHART - ICAO**

RADAR **126.100**
START **118.200**

**TYUMEN, RUSSIA
ROSHCHINO
VOR RWY 30**



DME URT	5.0	7.0	9.0
ALTITUDE	900'	1250'	1610'



OCA(H)	A	B	C	D
Straight-in Approach	770' (420') (130)	770' (420') (130)	770' (420') (130)	770' (420') (130)
Circling	780' (410') (125)	870' (500') (150)	970' (600') (185)	1070' (690') (215)

1 TRANSITION LEVEL:
- FL040 when QNH is 1013 hPa (760mm mercury column) or above;
- FL050 when QNH is 977 hPa (733mm mercury column) or above, but less than 1013 hPa (760mm mercury column);
- FL060 when QNH is less than 977 hPa (733mm mercury column).

WARNING:
1. Final approach track is offset by 4° from RCL.
2. Turn before passing MAPt is PROHIBITED.
3. Timing not authorized for defining MAPt.

GROUND SPEED	km/h	150	180	210	240	270	300	330	360	390	420	450
	m/s	2.2	2.6	3.1	3.5	3.9	4.4	4.8	5.2	5.7	6.1	6.6
RATE OF DESCENT	ft/min	433	512	610	689	768	866	945	1024	1122	1201	1299