

LOC I-ITH 108.7	APP CRS 325°	Rwy Idg 6602
		TDZE 1099
		Apt Elev 1099

ILS or LOC RWY 32

ITHACA TOMPKINS INTL (ITH)

DME required.

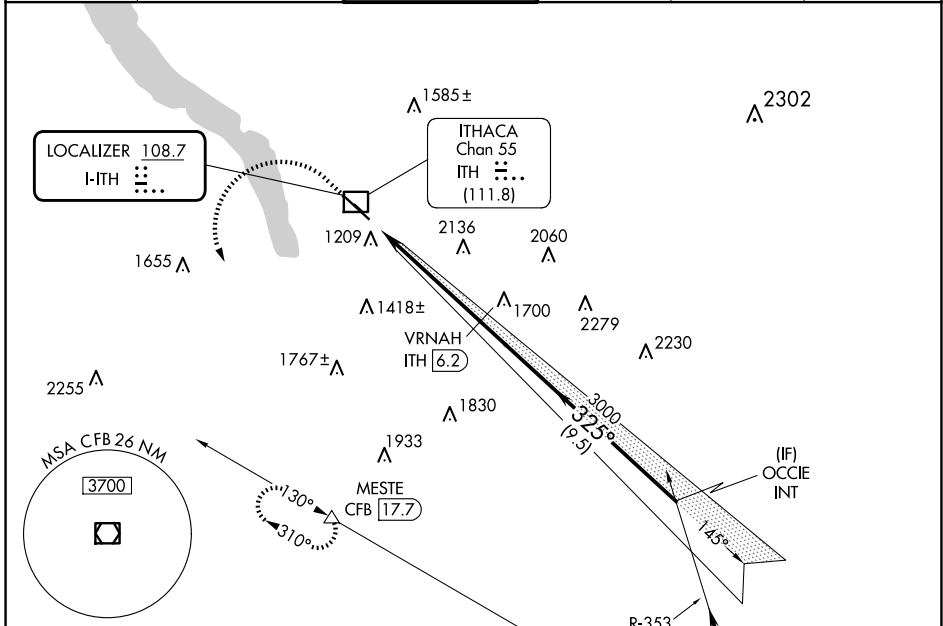
⚠ Circling NA to Rwy 15 and 33. DME from ITH DME. DME use requires simultaneous reception of I-ITH and ITH DME.

⚠ -19°C

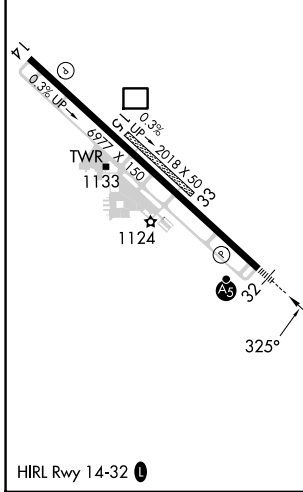
MALSR **A2**

MISSED APPROACH: Climb to 2600 then climbing left turn to 4000 on heading 180° and CFB VOR/DME R-310 to MESTE/CFB VOR/DME 17.7 DME and hold.

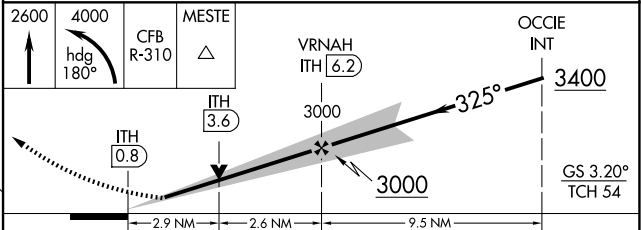
ATIS 125.175	ELMIRA APP CON ★ 124.3 257.8	ITHACA TOWER ★ 119.6 (CTAF) 0	GND CON 121.8	CLNC DEL 121.8	UNICOM 122.95
------------------------	--	--	-------------------------	--------------------------	-------------------------



ELEV 1099	D	TDZE 1099
-----------	----------	-----------



Procedure NA for arrival on CFB VOR/DME airway radials 310 CW 015 and V374 northwest bound.



CATEGORY	A	B	C	D
S-ILS 32	1349/24		250 (300-1/2)	
S-LOC 32	2140/40 1041 (1100-3/4)	2140/55 1041 (1100-1)	2140-2 1/2 1041 (1100-2 1/2)	
C CIRCLING	2140-1 1/4 1041 (1100-1 1/4)	2140-1 1/2 1041 (1100-1 1/2)	2140-3 1041 (1100-3)	2440-3 1341 (1400-3)

NE-2, 20 MAR 2025 to 17 APR 2025

NE-2, 20 MAR 2025 to 17 APR 2025