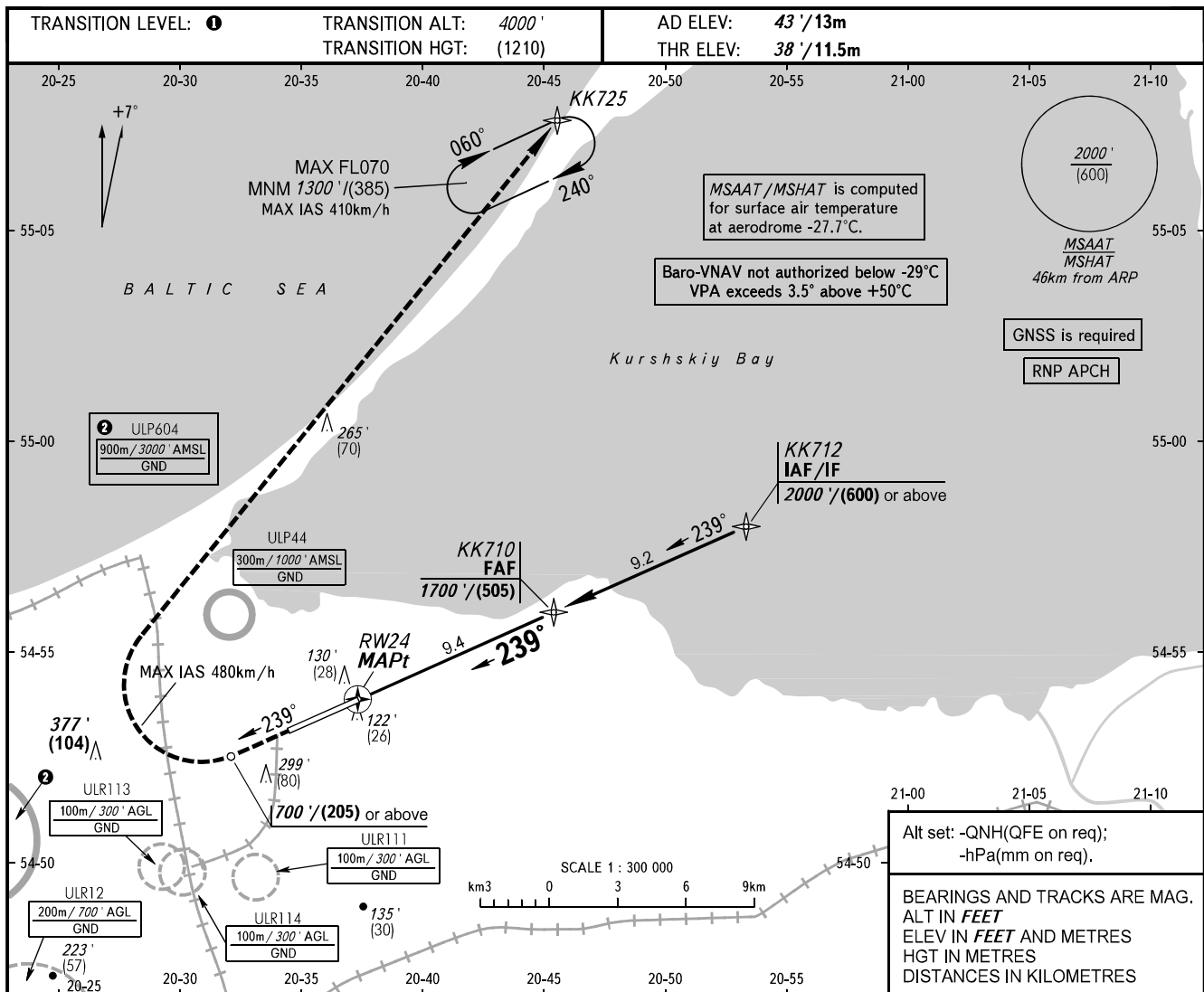


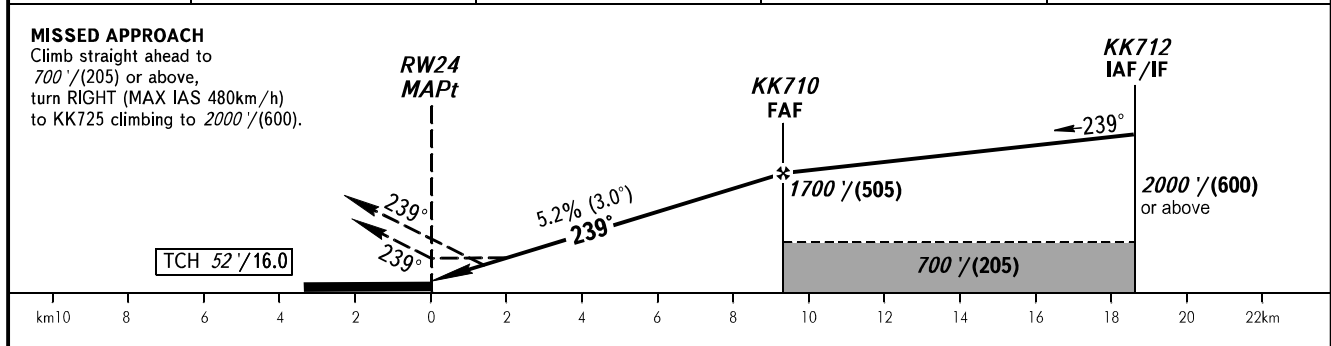
**INSTRUMENT  
APPROACH  
CHART - ICAO**

TOWER 127.200

**KALININGRAD, RUSSIA**  
KHRABROVO  
RNP RWY 24



DIST TO RW24	2.0	4.0	6.0	8.0
ALTITUDE/HEIGHT	432'/(125)	776'/(225)	1120'/(330)	1464'/(435)



OCA(H)		A	B	C	D						
Straight-in Approach	LNAV	390' (350') (110)	390' (350') (110)	390' (350') (110)	390' (350') (110)						
	LNAV/VNAV	340' (300') (95)	350' (310') (100)	370' (330') (105)	380' (340') (105)						
Circling		600' (550') (170)	600' (550') (170)	700' (650') (205)	780' (730') (225)						
GROUND SPEED		km/h	150	180	210	240	270	300	330	360	390
RATE OF DESCENT		m/s	2.2	2.6	3.0	3.5	3.9	4.4	4.8	5.2	5.7
		ft/min	433	512	610	689	768	866	945	1024	1122

- ① TRANSITION LEVEL:**
- FL050 when QNH is 1013 hPa (760mm mercury column) or above;
  - FL060 when QNH is 977 hPa (733mm mercury column) or above, but less than 1013 hPa (760mm mercury column);
  - FL070 when QNH is less than 977 hPa (733mm mercury column).