

INSTRUMENT APPROACH
CHART-ICAO

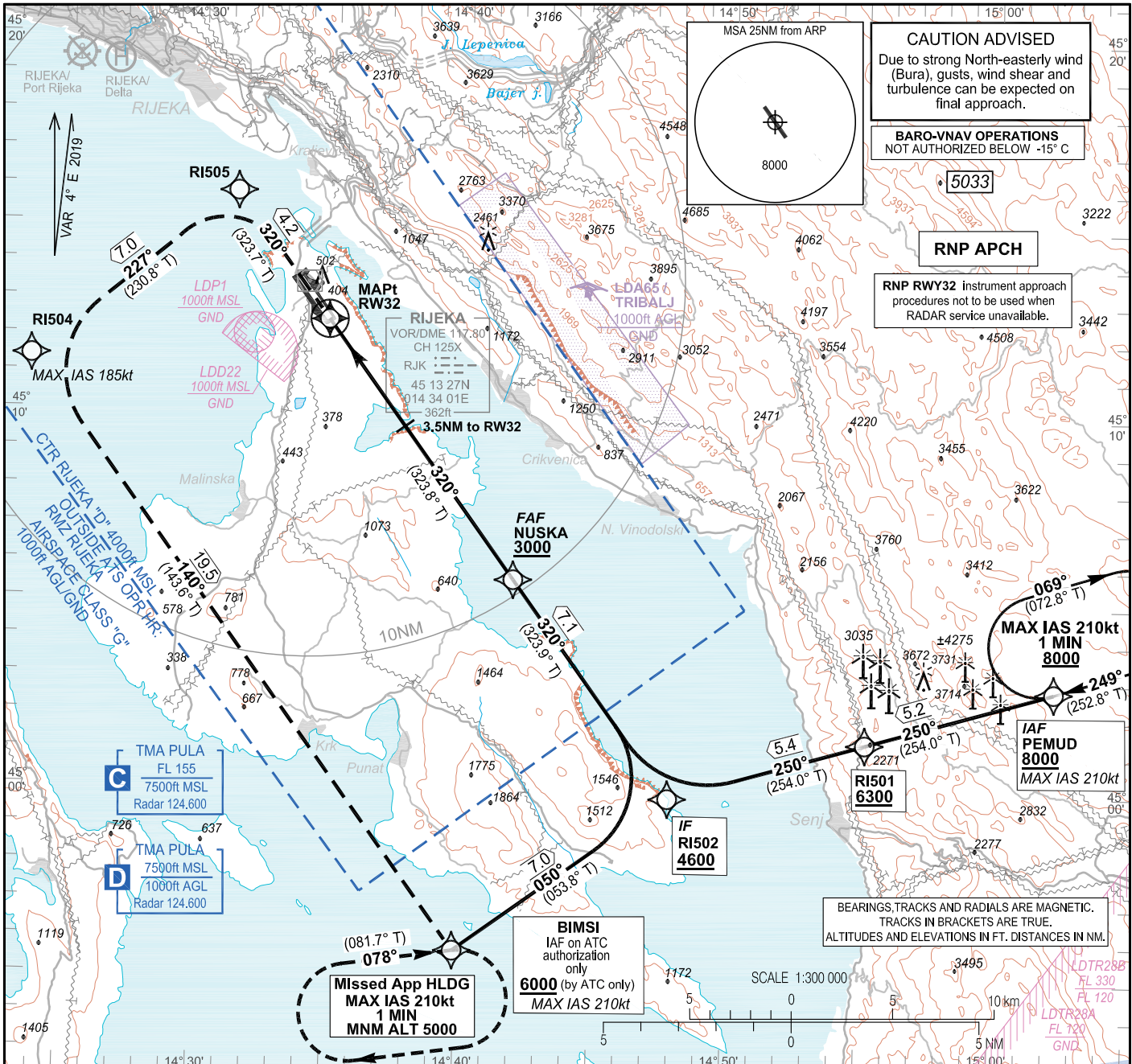
AD ELEV 278
HEIGHTS RELATED
TO THR 32 ELEV 246

SBAS
CH: 44289
E32A

PULA RADAR 127.675
RIJEKA TOWER 124.600
119.000

RIJEKA / Krk I. (LDRI)

RNP RWY 32

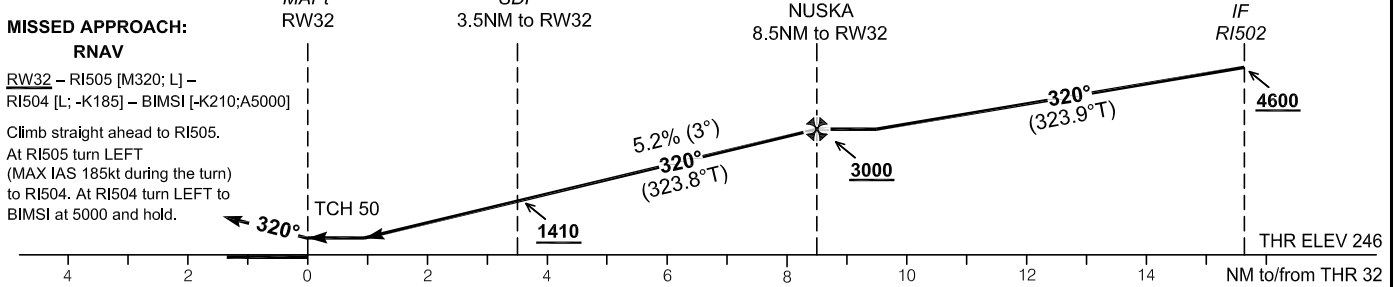


TRANSITION ALT 10 000

MISSED APPROACH:
RNAV

RW32 – RI505 [M320; L] –
RI504 [L; -K185] – **BIMSI** [-K210; A5000]

Climb straight ahead to RI505.
At RI505 turn **LEFT**
(MAX IAS 185kt during the turn)
to RI504. At RI504 turn **LEFT**
to **BIMSI** at 5000 and hold.



OCA(H)		A	B	C	D
Straight-in approach	LNAV	680 (434)			
	LNAV/VNAV	640 (394)	650 (404)	660 (414)	670 (424)
	LPV	640 (394)	650 (404)	660 (414)	670 (424)
Circling		Circling for ACFT CAT A, SW of the aerodrome not allowed.			
		Circling for ACFT CAT B, C and D not allowed.			

Altitude related to descent gradient of 5.2%							
DIST THR / RW14	NM	8	7	6	5	4	3
Altitude	ft	2840	2520	2210	1890	1570	1250

NUSKA TO RW32 DISTANCE 8.49NM						
GS (kt)	80	100	120	140	160	180
min:sec	6:22	5:06	4:15	3:38	3:11	2:50
Rate of descent (5.2%) (ft/min)	425	531	637	743	849	955
MAPt at RW32	TIMING NOT AUTHORIZED FOR DEFINING THE MAPt					

CHANGE: Heliport RIJEKA/Delta added.

RIJEKA / Krk I. (LDRI)

RNP RWY 32

Input data	
Operation Type	0
SBAS Provider	1 (EGNOS)
Airport Identifier	LDRI
Runway	32
Runway Letter	0 (None)
Approach Performance Designator	0
Route Indicator	
Reference Path Data Selector	0
Reference Path Identifier	E32A
LTP/FTP Latitude	451227.4075N
LTP/FTP Longitude	0143448.7030E
LTP/FTP Ellipsoidal Height (metres)	119.1
FPAP Latitude	451332.3610N
Delta FPAP Latitude (seconds)	64.9535
FPAP Longitude	0143341.1580E
Delta FPAP Longitude (seconds)	-67.5450
Threshold Crossing Height	50.0
TCH Units Selector	0 (feet)
Glidepath Angle (degrees)	3.00
Course Width (metres)	105.00
Length Offset (metres)	0
HAL (metres)	40.0
VAL (metres)	50.0
Output data	
Data Block	10 09 12 04 0C 20 00 00 01 32 33 05 1F A8 66 13 FE D3 41 06 A7 18 73 FB 01 4E F0 FD F4 01 2C 01 64 00 C8 FA 17 74 39 4A
Calculated CRC Value	1774394A
Required Additional Data	
ICAO Code	LD
LTP/FTP Orthometric Height (metres)	75.0

CHANGE: Heliport RIJEKA/Delta added.

LDRI RNP RWY 32

Proposed tabular description for navigation database coding - APPROACH TRANSITION

Serial Number	Fix	Path descriptor	Waypoint name	Flyover	Course	Magnetic Variation	Distance (NM)	Turn direction	Altitude (ft)	Speed (kt)	VPA/TCH (°/ft)	Remarks	NAV SPEC
					°M (°T)								
010	IAF	IF	PEMUD	-	-	4°E	-	-	+8000	-210	-	-	RNP APCH
020	-	TF	RI501	-	250° (254.0° T)	4°E	5.2	-	+6300	-	-	-	
030	IF	TF	RI502	-	250° (254.0° T)	4°E	5.4	-	+4600	-	-	-	
010	IAF	IF	BIMSI	-	-	4°E	-	-	+5000	-210	-	IAF on ATC authorization only	RNP APCH
020	IF	TF	RI502	-	050° (053.8° T)	4°E	7.0	-	+4600	-	-	-	

Proposed tabular description for navigation database coding - FINAL TRANSITION

Serial Number	Fix	Path descriptor	Waypoint name	Flyover	Course	Magnetic Variation	Distance (NM)	Turn direction	Altitude (ft)	Speed (kt)	VPA/TCH (°/ft)	Remarks	NAV SPEC
					°M (°T)								
010	IF	IF	RI502	-	-	4°E	-	-	+4600	-	-	-	RNP APCH
020	FAF	TF	NUSKA	-	320° (323.9° T)	4°E	7.1	-	+3000	-	-	-	
030	MAPt	TF	RW32	Y	320° (323.8° T)	4°E	8.5	-	-	-	3.0 / 50.0	-	
040	-	CF	RI505	-	320° (323.7° T)	4°E	4.2	-	-	-	-	-	
050	-	TF	RI504	-	227° (230.8° T)	4°E	7.0	L	-	-185	-	-	
060	MAHF	TF	BIMSI	-	140° (143.6° T)	4°E	19.5	L	5000	-210	-	-	
070	MAHF	HM	BIMSI	-	078° (081.7° T)	4°E	1MIN	R	5000	-210	-	Holding above 5000ft on ATC clearance only	RNAV 1

RNAV HOLDING tabular description

Waypoint name	Path Terminator	Inbound course °M (°T)	Leg time/distance NM	Turn direction	Minimum altitude ft	Maximum altitude ft	Speed limit MAX IAS (kt)	Magnetic variation	Remarks	NAV SPEC
PEMUD	HM	249° (252.8° T)	1MIN / -	R	8000	-	210	4°E	-	RNAV 1
BIMSI	HM	078° (081.7° T)	1MIN / -	R	5000	-	210	4°E	-	RNAV 1

Waypoint Coordinates

Waypoint Name	WGS-84 Latitude	WGS-84 Longitude
BIMSI	445542.4N	0143954.3E
NUSKA	450536.6N	0144154.7E
PEMUD	450247.1N	0150218.3E
RW32	451227.41N	0143448.70E
RI501	450120.9N	0145514.1E
RI502	445950.4N	0144751.7E
RI504	451124.1N	0142337.0E
RI505	451550.4N	0143117.4E

CHANGE: Heliport RIJEKA/Delta added.

OVA STRANICA JE NAMJERNO OSTAVLJENA PRAZNA
THIS PAGE INTENTIONALLY LEFT BLANK