

SW-4, 20 MAR 2025 to 17 APR 2025

SALT LAKE CITY APP CON
121.1

ARRIVAL ROUTE DESCRIPTION

BEARR TRANSITION (BEARR.WLKRR1)

CARTR TRANSITION (CARTR.WLKRR1)

DRAPR TRANSITION (DRAPR.WLKRR1)

FLECC TRANSITION (FLECC.WLKRR1)

LANDING OGD: From over WLKRR then on track 114°. Expect RADAR vectors to final approach course.

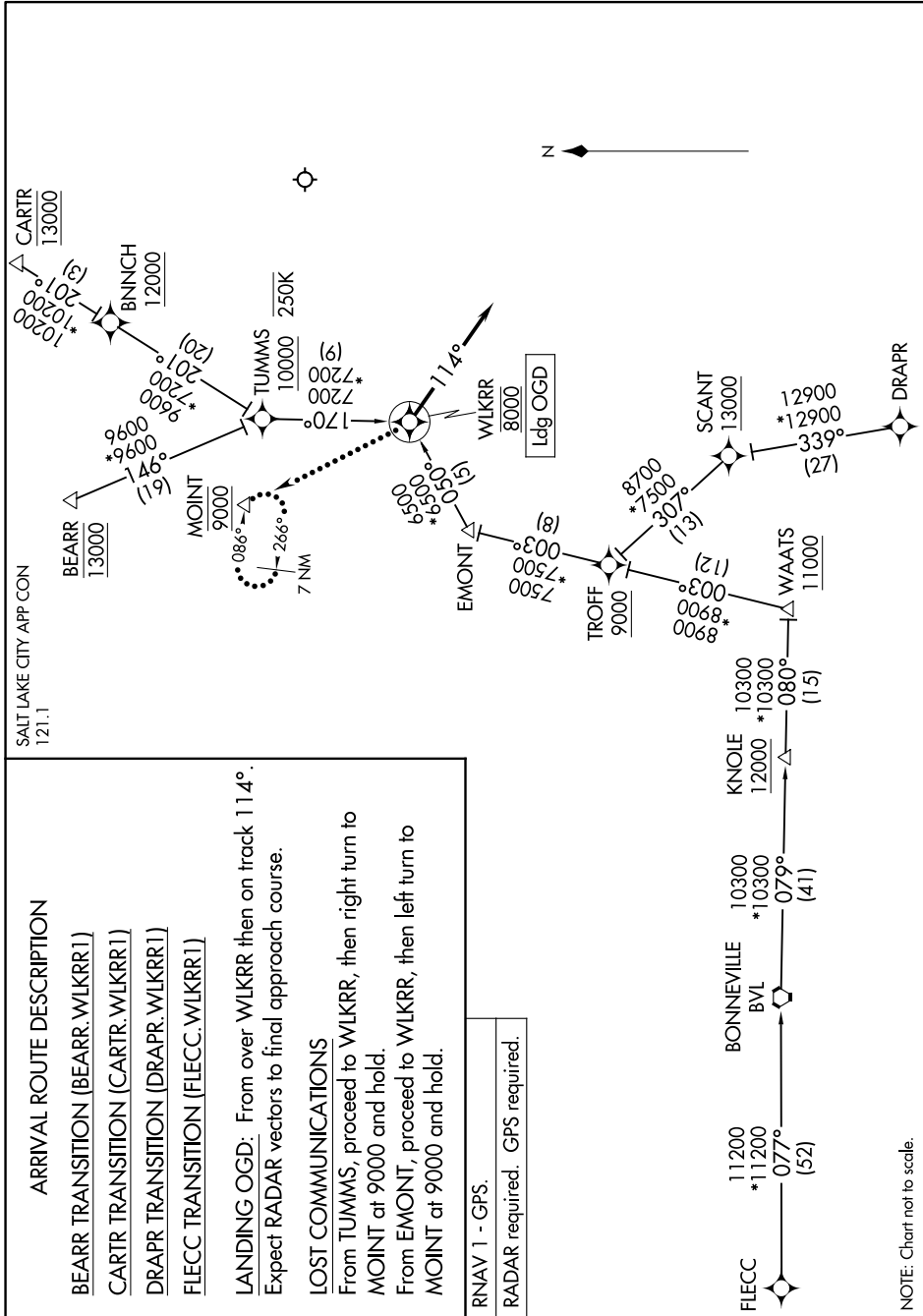
LOST COMMUNICATIONS

From TUMMS, proceed to WLKRR, then right turn to MOINT at 9000 and hold.

From EMONT, proceed to WLKRR, then left turn to MOINT at 9000 and hold.

RNAV 1 - GPS.

RADAR required. GPS required.



NOTE: Chart not to scale.

SW-4, 20 MAR 2025 to 17 APR 2025