

ICAO - INSTRUMENT APPROACH CHART

REMARK (1):

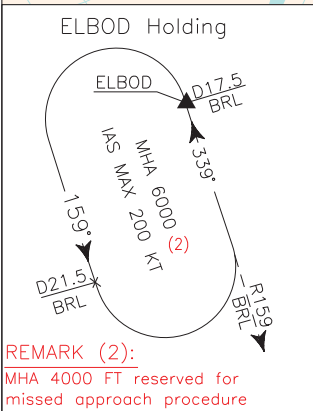
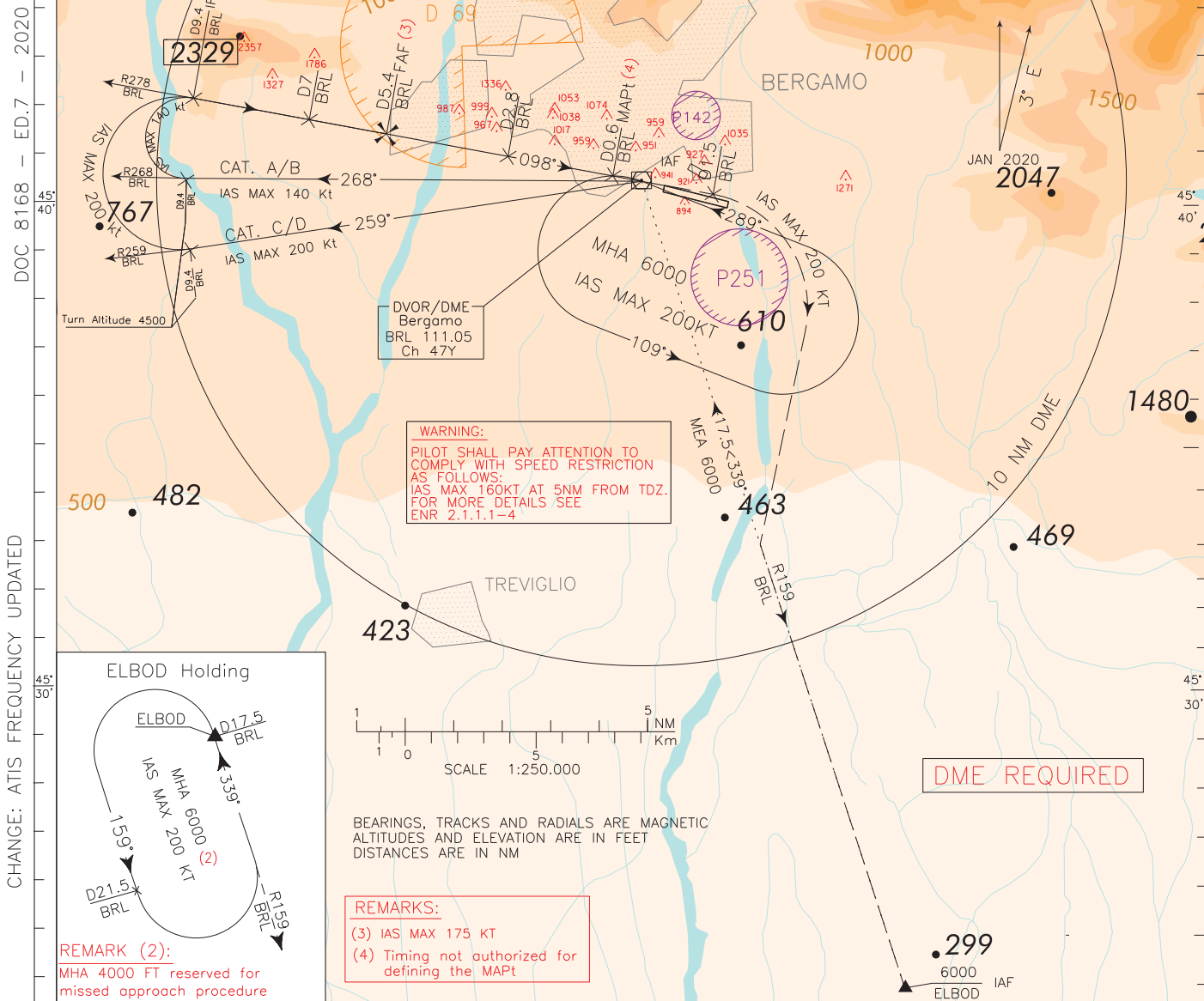
Final approach track is offset 3.8° from RCL extension. Final approach track intersects RCL extension at 1745m before THR 10.

APP Milano Radar (126.300)126.750  
 TWR Orio TWR 125.875 (CH 134.105)  
 ATIS Bergamo ATIS Information 118.540

AD ELEV  
 782

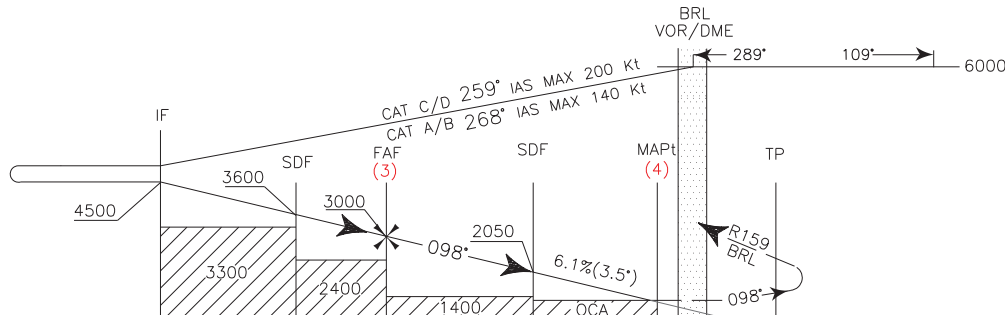
LIME

BERGAMO/ORIO AL SERIO  
 VOR RWY10



TRANSITION ALT 6000

**MISSED APPROACH:** At MAPt climb to 4000 ft and proceed on TR 098°. At 1.5 BRL DME (RDL 098 BRL VOR) turn right (IAS MAX 200 KT) to join and follow RDL159 BRL VOR to ELBOD holding pattern. Hold between 17.5 and 21.5 NM, inbound TR 339° (RDL 159 BRL VOR), left turn, IAS MAX 200KT.



NM	11	10	9	8	7	6	5	4	3	2	1	0	1	2	3	4	5	6	7	NM
BRL DME		D9.4		D7.0		D5.4		D2.8		D0.6	0		D1.5							BRL DME

OCA (OCH)		A	B	C	D
STRAIGHT IN APPROACH	VOR DME	1280 (498)			
CIRCLING RWY28		1490 (708)	1590 (808)	1750 (968)	

CIRCLING SECTOR:



Only South of RWY

GS	FT PER NM	BRL DISTANCE	ALT (HGT)
80	495	5 DME	2860(2078)
100	620	4 DME	2490(1708)
120	745	3 DME	2120(1338)
140	865	2 DME	1750(968)
160	990	1 DME	1380(598)

MNM SECT ALT VOR

