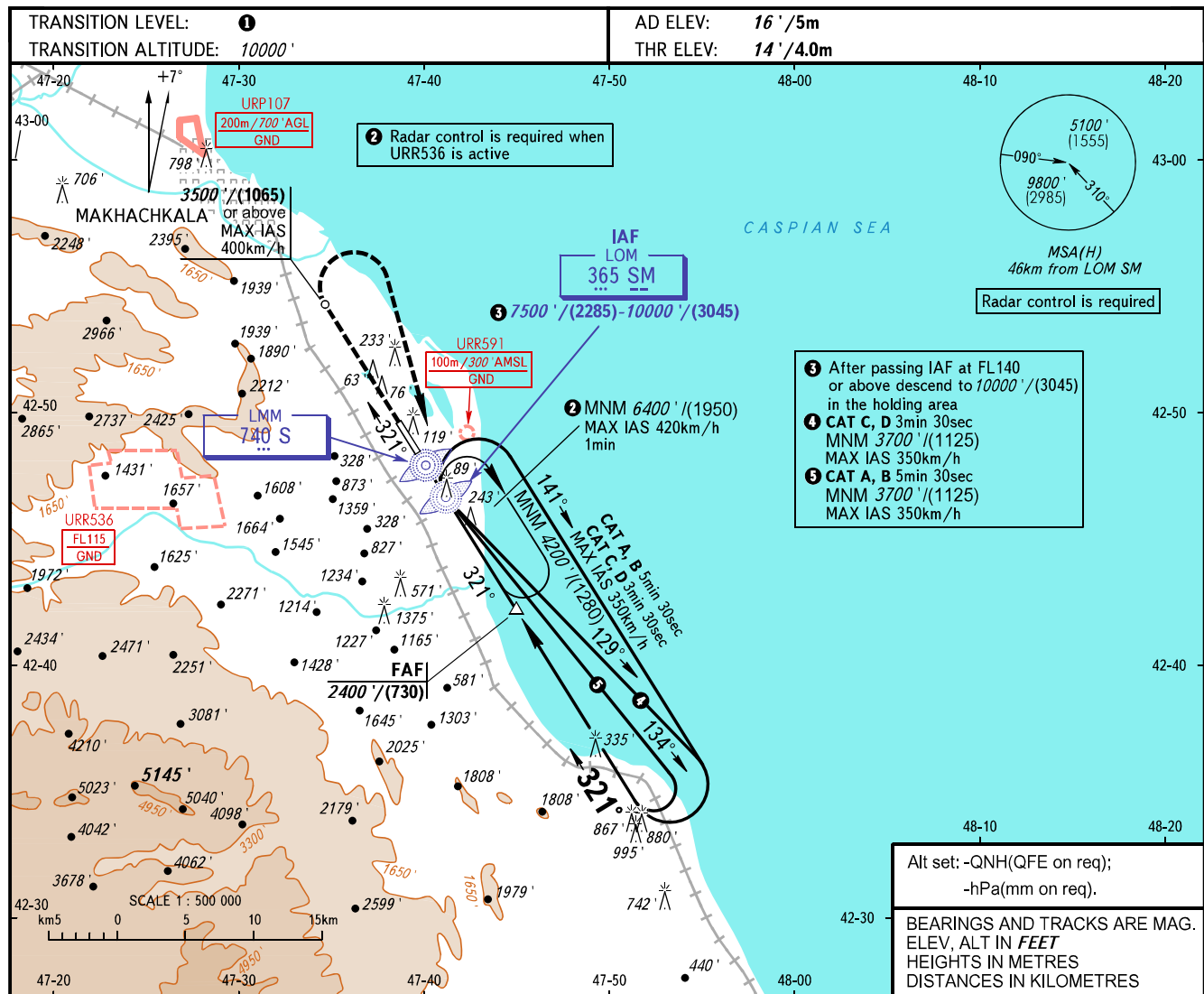


**INSTRUMENT
APPROACH
CHART - ICAO**

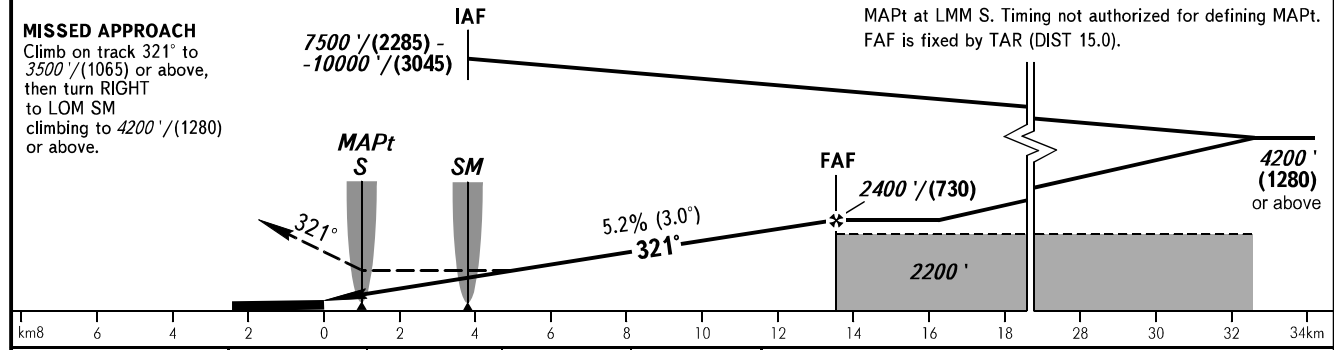
RADAR
START 121.300
121.300

MAKHACHKALA, RUSSIA
UYTASH
NDB Y RWY 32



- ➊ After passing IAF at FL140 or above descend to 10000'/(3045) in the holding area
- ➋ CAT C, D 3min 30sec MNM 3700'/(1125) MAX IAS 350km/h
- ➌ CAT A, B 5min 30sec MNM 3700'/(1125) MAX IAS 350km/h

Alt set: -QNH(QFE on req);
-hPa(mm on req).
BEARINGS AND TRACKS ARE MAG.
ELEV, ALT IN FEET
HEIGHTS IN METRES
DISTANCES IN KILOMETRES



OCA(H)		A	B	C	D
Straight-in Approach	2.5%*	1100' (1090')	1100' (1090')	1100' (1090')	1100' (1090')
	3.4%*	740' (730')	740' (730')	740' (730')	740' (730')
Circling		1100' (1090')	1100' (1090')	1720' (1700')	1870' (1860')

* MNM climb gradient

➊ TRANSITION LEVEL:
- FL110 when QNH is 1013 hPa (760mm mercury column) or above;
- FL120 when QNH is 977 hPa (733mm mercury column) or above, but less than 1013 hPa (760mm mercury column);
- FL130 when QNH is less than 977 hPa (733mm mercury column).
WARNING:
1. Visual manoeuvring west of the aerodrome is PROHIBITED.
2. Turn before passing MAPt is PROHIBITED.

GROUND SPEED	km/h	150	180	210	240	270	300	330	360	390	420	450
	RATE OF DESCENT	m/s	2.2	2.6	3.0	3.5	3.9	4.3	4.8	5.2	5.6	6.1
	ft/min	427	512	597	682	768	853	938	1024	1109	1194	1280