

APPROCHE AUX INSTRUMENTS

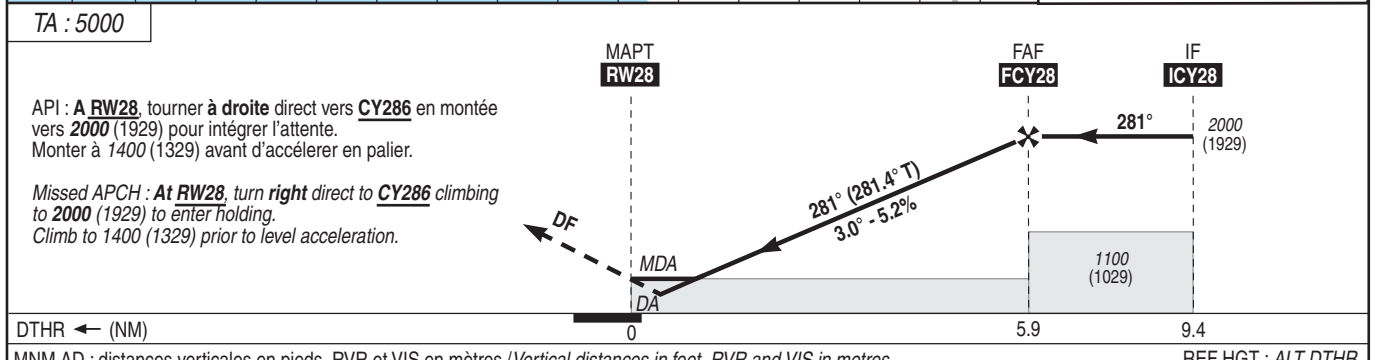
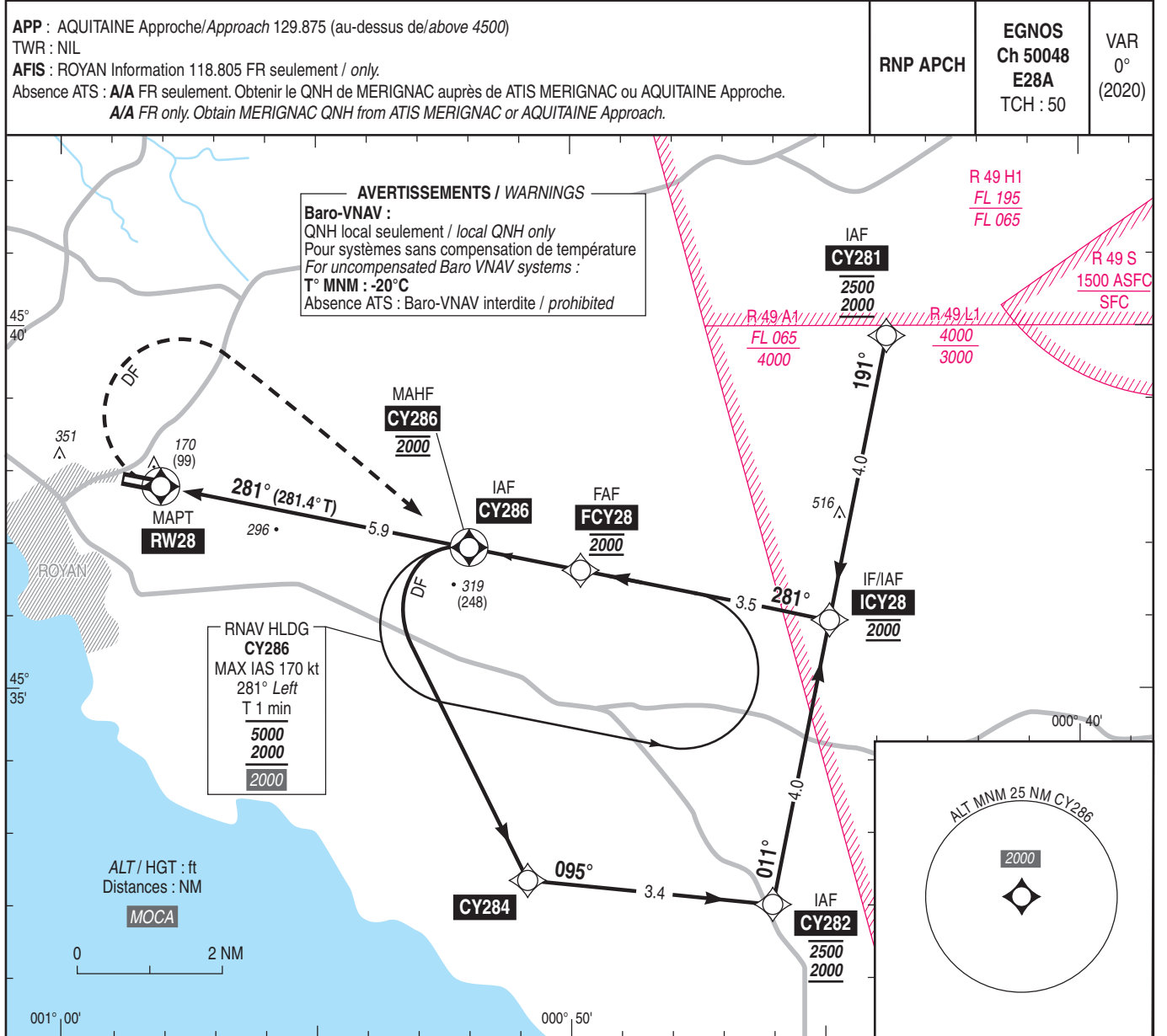
ROYAN MEDIS

Instrument approach

CAT A B

ALT AD : 72, DTNR : 71 (3 hPa)

RNP RWY 28



CAT	LPV			LNAV-VNAV			LNAV			MVL/Circling (1)		DIST RW28						
	DA (H)	RVR	OCH	DA (H)	RVR	OCH	MDA (H)	RVR	OCH	MDA (H)	VIS	MDA (H)	VIS	NM	2	3	4	5
A	450 (380)		378	450 (380)		378	620 (550)	1500	543	650 (580)	1500	880 (810)	1500		760 (689)	1075 (1004)	1395 (1324)	1715 (1644)
B	470 (390)	1500	390	470 (390)	1500	390												

Observations / Remarks : (1) MVL interdites au Sud de la piste. / Circling prohibited South of RWY.
Panne de guidage GNSS lors de l'approche / Loss of GNSS guidance during approach : voir / see AIP ENR 1.5

FAF - MAPT	5.9 NM	70 kt	80 kt	90 kt	100 kt	110 kt	120 kt	130 kt
		5 min 03	4 min 26	3 min 56	3 min 32	3 min 13	2 min 57	2 min 43
VSP (ft/min)		370	420	480	530	580	640	690