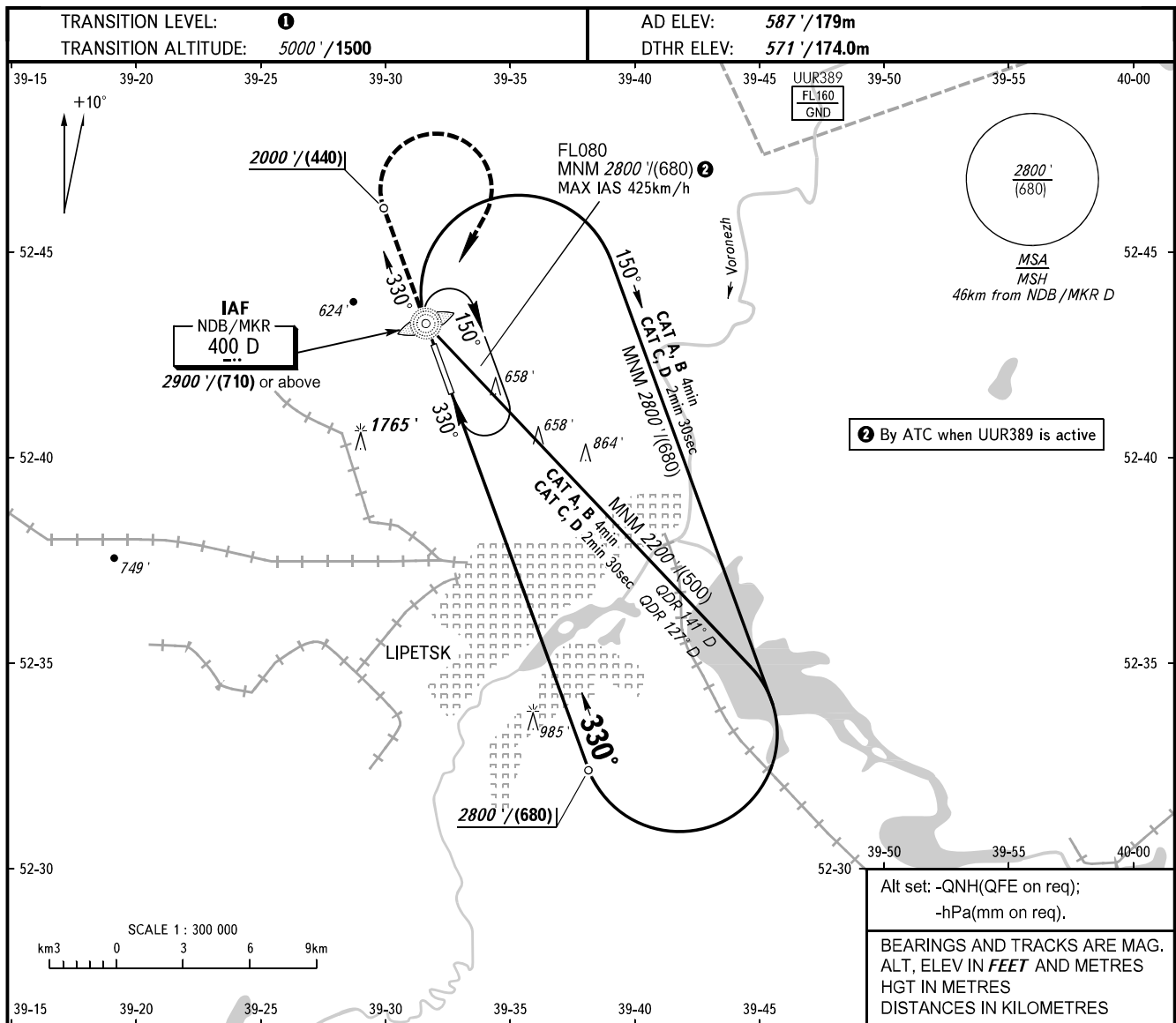


**INSTRUMENT
APPROACH
CHART - ICAO**

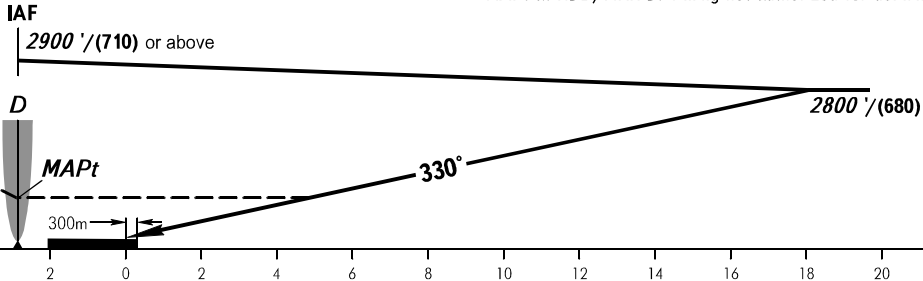
TOWER **126.300**

LIPETSK, RUSSIA
LIPETSK
NDB Y RWY 33



MISSED APPROACH

Climb on track 330° to 2000' (440),
then turn RIGHT to NDB/MKR D
climbing to 2900' (710) or above.



OCA(H)	A	B	C	D
Straight-in Approach	1280' (710') // /(220)	1280' (710') // /(220)	1280' (710') // /(220)	1280' (710') // /(220)
Circling	1280' (710') // /(215)*	1280' (710') // /(215)*	1280' (710') // /(215)*	1280' (710') // /(215)*

1 TRANSITION LEVEL:
- FL060 when QNH is 1013 hPa
(760mm mercury column) or above;
- FL070 when QNH is 977 hPa
(733mm mercury column) or above,
but less than 1013 hPa (760mm mercury column);
- FL080 when QNH is less than 977 hPa
(733mm mercury column).

WARNING
Visual manoeuvring west of the aerodrome is PROHIBITED.