

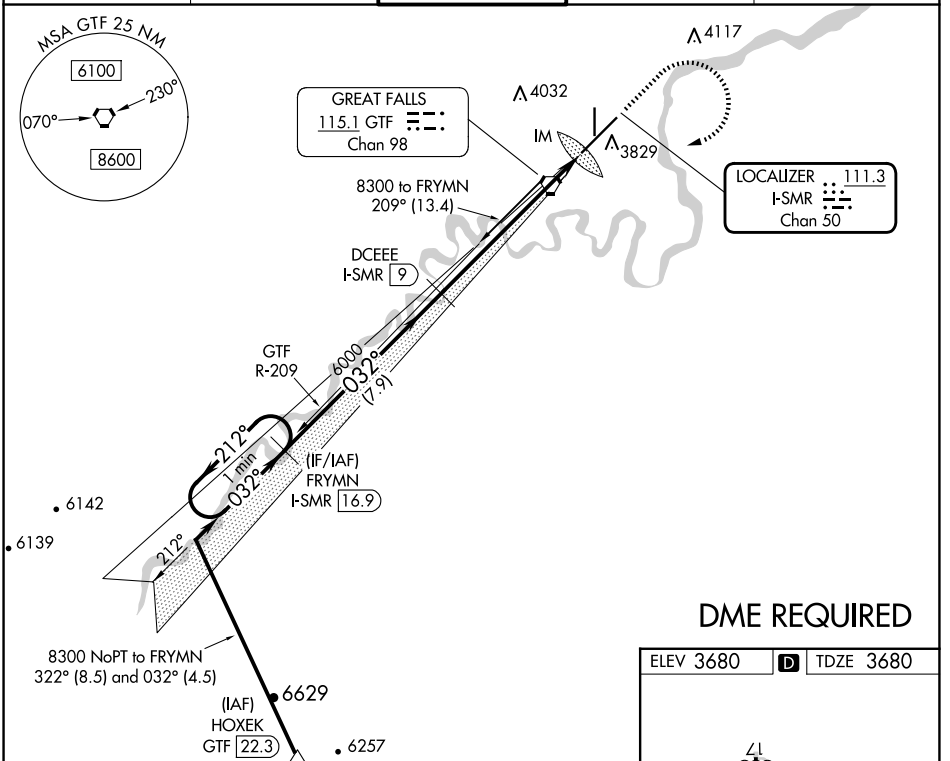
LOC/DME I-SMR <b>111.3</b> Chan 50	APP CRS <b>032°</b>	Rwy Idg <b>10502</b> TDZE <b>3680</b> Apt Elev <b>3680</b>
--	------------------------	--

# ILS RWY 3 (SA CAT I)

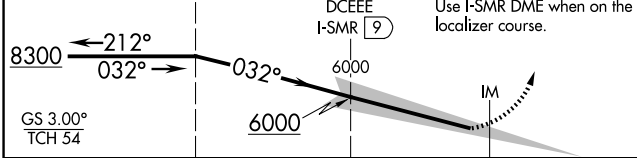
GREAT FALLS INTL (GTF)

<p>Requires specific OPSPEC, MSPEC, or LOA approval and use of HUD to DH. DME required.</p>	<p>ALSIF-2</p>	<p>MISSED APPROACH: Climb to 5000 then climbing right turn to 8300 direct GTF VORTAC then on GTF VORTAC R-209 to FRYMNI/I-SMR 16.9 DME and hold.</p>

ATIS <b>126.6 269.0</b>	GREAT FALLS APP CON <b>128.6 379.175</b>	GREAT FALLS TOWER <b>118.7 282.2</b>	GND CON <b>121.7 348.6</b>	CLNC DEL <b>121.7 348.6</b>
----------------------------	---	---	-------------------------------	--------------------------------

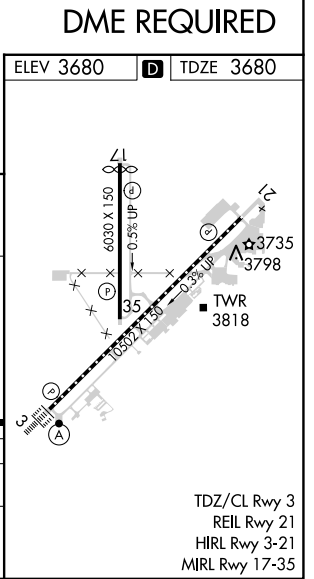


<p>VGSI and ILS glidepath not coincident (VGSI Angle 3.00/TCH 70).          One Minute Holding Pattern FRYMNI I-SMR 16.9</p>	<p>5000  </p>	<p>8300  </p>	<p>GTF  </p>	<p>GTF R-209  </p>	<p>FRYMNI I-SMR 16.9  </p>
--	-------------------	-------------------	------------------	------------------------	--------------------------------



CATEGORY	A	B	C	D
S-ILS 3	RA 140/14 150 DA 3830			

**SA CATEGORY I ILS-SPECIAL AIRCREW & AIRCRAFT CERTIFICATION REQUIRED**



NW-1, 20 MAR 2025 to 17 APR 2025

NW-1, 20 MAR 2025 to 17 APR 2025