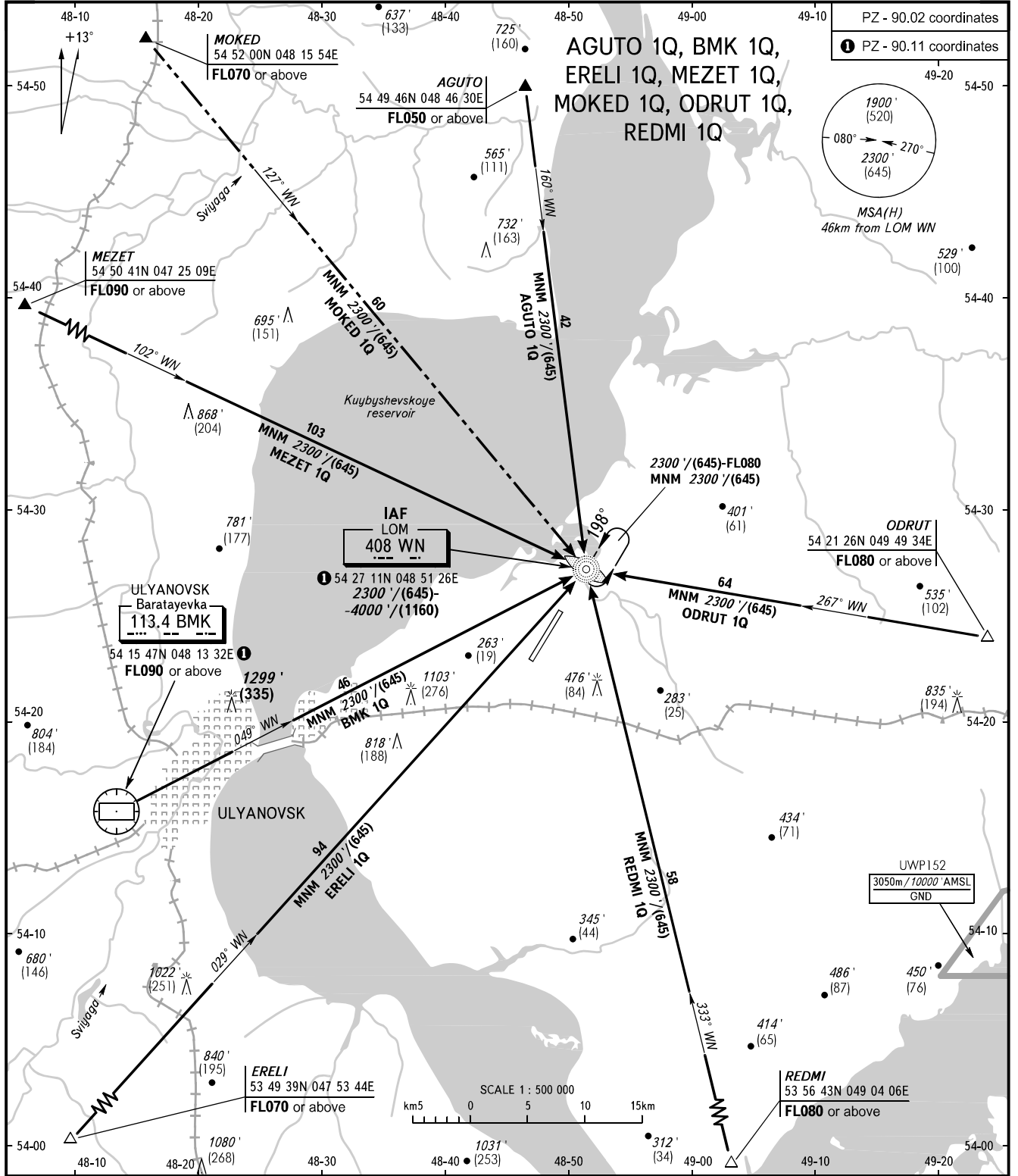


STANDARD ARRIVAL CHART
INSTRUMENT (STAR) - ICAO

ULYANOVSK, RUSSIA
VOSTOCHNY
RWY 20

TRANSITION
LEVEL: **2**



BEARINGS AND TRACKS ARE MAGNETIC
ALTITUDES IN FEET
ELEVATIONS IN FEET AND METRES
HEIGHTS IN METRES
DISTANCES IN KILOMETRES

Alt set: - QNH (QFE on req);
- hPa (mm on req).

2 TRANSITION LEVEL:
- FL050 when QNH is 977 hPa (733mm mercury column) or above;
- FL060 when QNH is less than 977 hPa (733mm mercury column).

CHANGE: HGT