

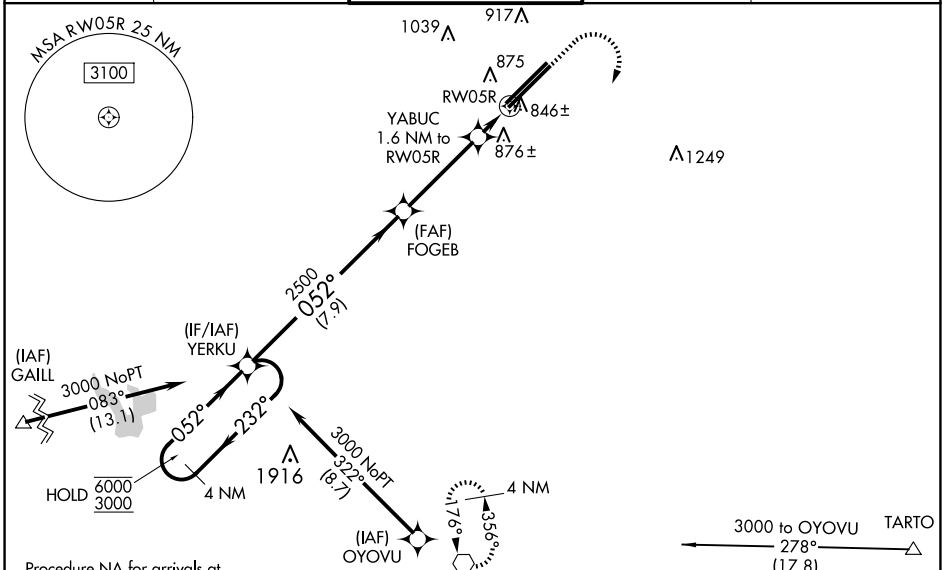
WAAS CH 78410	APP CRS 052°	Rwy Idg 12103
W05A		TDZE 736
		Apt Elev 744

RNAV (GPS) RWY 5R

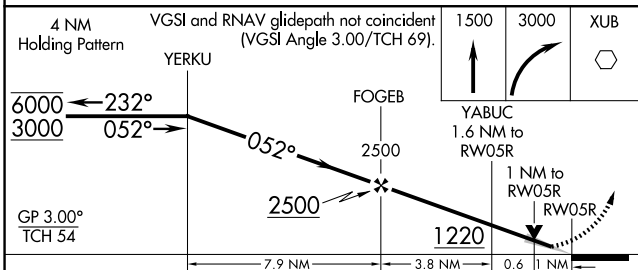
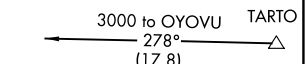
RICKENBACKER INTL (LCK)

RNP APCH - GPS		ALSF-2 	MISSED APPROACH: Climb to 1500 then climbing right turn to 3000 direct XUB VOR and hold.
⚠ Circling NA northwest of Rwy 5L-23R. For uncompensated Baro-VNAV systems, LNAV/VNAV NA below -16°C or above 54°C. Baro-VNAV and VDP NA when using John Glenn Columbus Intl altimeter setting. When local altimeter setting not received, use John Glenn Columbus Intl altimeter setting: increase LPV DA to 971 feet; increase LNAV/VNAV DA to 1138 feet and visibility to RVR 4000 all Cats; increase all MDAs 40 feet and LNAV Cats C/D visibility to RVR 4000 and Circling Cat D visibility to 2 1/4 SM. For inop ALS when using John Glenn Columbus Intl altimeter setting, increase LNAV/VNAV visibility to RVR 6000, all Cats.			

ATIS 132.75	COLUMBUS APP CON 134.0 279.6	RICK TOWER 120.05 348.4	GND CON 125.275 275.8	CLNC DEL 125.275 275.8
-----------------------	--	-----------------------------------	---------------------------------	----------------------------------

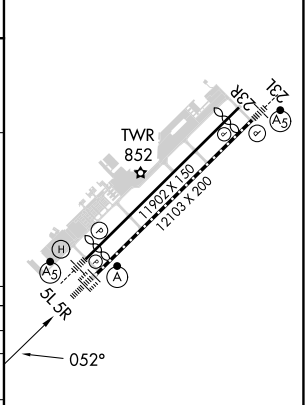


Procedure NA for arrivals at GAILL on V19 southwest bound.



ELEV 744	D	TDZE 736
----------	----------	----------

CATEGORY	A	B	C	D
LPV DA		936/18	200 (200-1/2)	
LNAV/VNAV DA		1103/35	367 (400-5%)	
LNAV MDA	1120/24	384 (400-1/2)	1120/35	384 (400-5%)
CIRCLING	1240-1	496 (500-1)	1280-1 1/2 536 (600-1 1/2)	1400-2 656 (700-2)



TDZ/CL Rwy 5R
REIL Rwy 23R
HIRL Rwys 5L-23R and 5R-23L

EC-2, 20 MAR 2025 to 17 APR 2025

EC-2, 20 MAR 2025 to 17 APR 2025