

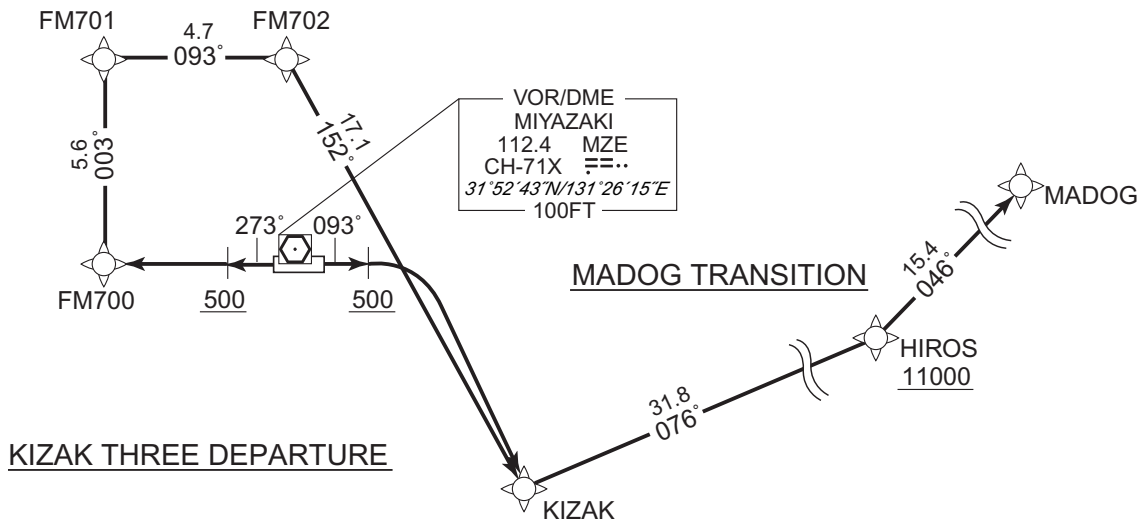
STANDARD DEPARTURE CHART - INSTRUMENT

RJFM / MIYAZAKI

RNAV SID and TRANSITION

KIZAK THREE DEPARTURE MADOG TRANSITION		RNAV1
Note 1 ) DME/DME/IRU or GNSS required. ※The aircraft equipped with only DME/DME/IRU must be able to update its position without delay at the starting point of take-off roll. 2 ) RADAR service required.	Critical DME	RWY27 TGE : 4.0NM to KIZAK - KIZAK
	DME GAP	RWY09 : DER - 4.0NM to KIZAK RWY27 : DER - 4.0NM to KIZAK
	Inappropriate Navaids	See AD1.1.6.10.3. Inappropriate NAVAIDs for RNAV1

VAR 8° W



CHANGE : PROC renamed. VAR. PROC course.

KIZAK THREE DEPARTURE

RWY09 : Climb on HDG093° at or above 500FT, direct to KIZAK.

RWY27 : Climb on HDG273° at or above 500FT, direct to FM700, to FM701, to FM702, to KIZAK.

Note RWY09: 5.0% climb gradient required up to 500FT.

RWY27: 7.0% climb gradient required up to 900FT.

MADOG TRANSITION

From KIZAK, to HIROS at or above 11000FT, to MADOG.

STANDARD DEPARTURE CHART - INSTRUMENT

RJFM / MIYAZAKI

RNAV SID and TRANSITION

KIZAK THREE DEPARTURE

RWY09

Serial Number	Path Descriptor	Waypoint Identifier	Fly Over	Course °M(°T)	Magnetic Variation	Distance (NM)	Turn Direction	Altitude (FT)	Speed (KIAS)	Vertical Angle	Navigation Specification
001	VA	-	-	093 (085.2)	-7.5	-	-	+500	-	-	RNAV1
002	DF	KIZAK	-	-	-7.5	-	R	-	-	-	RNAV1

RWY27

Serial Number	Path Descriptor	Waypoint Identifier	Fly Over	Course °M(°T)	Magnetic Variation	Distance (NM)	Turn Direction	Altitude (FT)	Speed (KIAS)	Vertical Angle	Navigation Specification
001	VA	-	-	273 (265.2)	-7.5	-	-	+500	-	-	RNAV1
002	DF	FM700	-	-	-7.5	-	-	-	-	-	RNAV1
003	TF	FM701	-	003 (355.2)	-7.5	5.6	-	-	-	-	RNAV1
004	TF	FM702	-	093 (085.2)	-7.5	4.7	-	-	-	-	RNAV1
005	TF	KIZAK	-	152 (144.5)	-7.5	17.1	-	-	-	-	RNAV1

MADOG TRANSITION

Serial Number	Path Descriptor	Waypoint Identifier	Fly Over	Course °M(°T)	Magnetic Variation	Distance (NM)	Turn Direction	Altitude (FT)	Speed (KIAS)	Vertical Angle	Navigation Specification
001	IF	KIZAK	-	-	-7.5	-	-	-	-	-	RNAV1
002	TF	HIROS	-	076 (069.0)	-7.5	31.8	-	+11000	-	-	RNAV1
003	TF	MADOG	-	046 (038.4)	-7.5	15.4	-	-	-	-	RNAV1

Waypoint Coordinates

Waypoint Identifier	Coordinates
FM700	315212.0N / 1312058.4E
FM701	315749.2N / 1312024.8E
FM702	315813.1N / 1312556.5E
KIZAK	314410.0N / 1313731.3E
HIROS	315530.2N / 1321230.5E
MADOG	320730.7N / 1322346.5E

CHANGE : PROC renamed. PROC course. VAR. Waypoint Coordinates added.