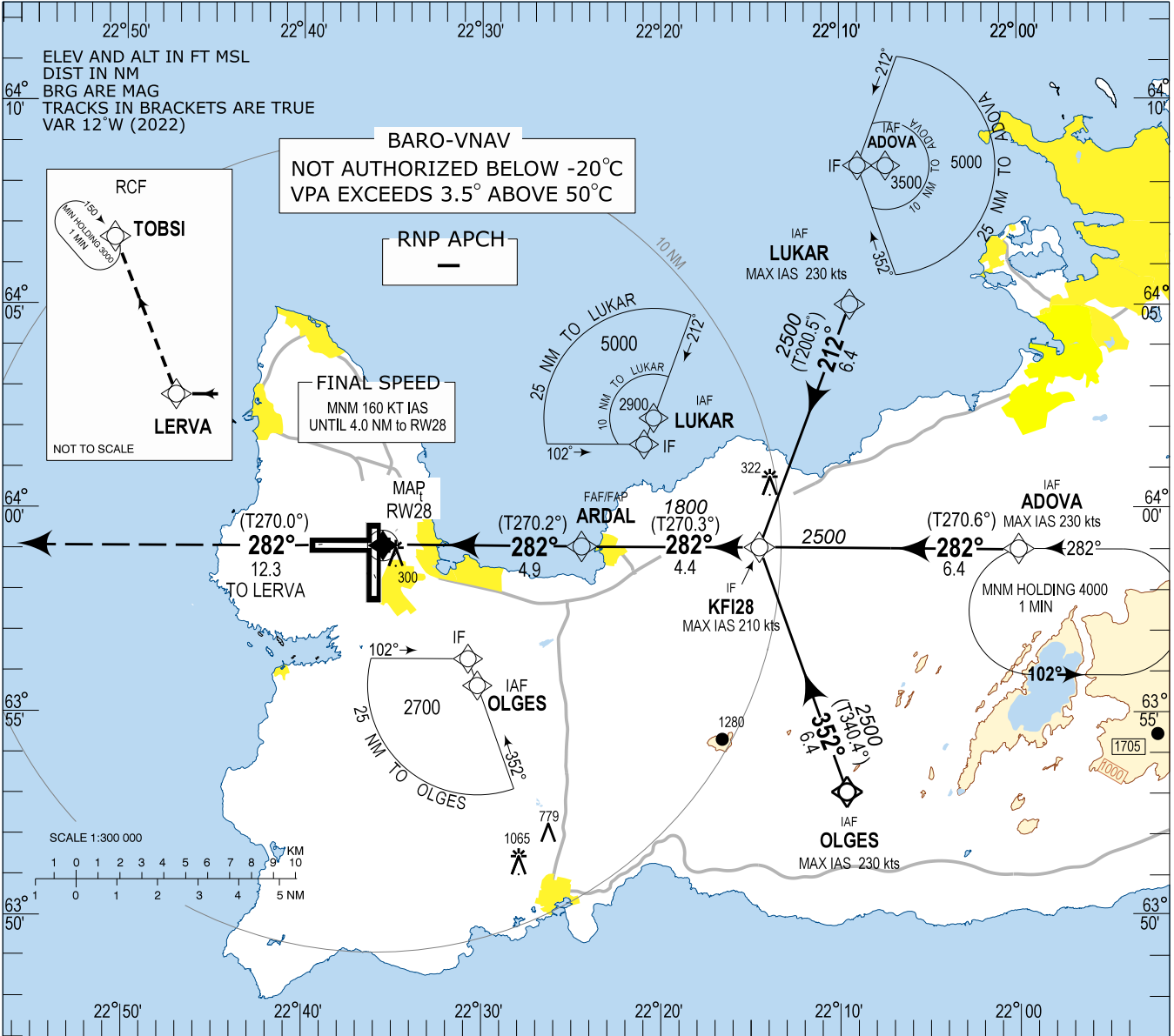


Keflavik RNP RWY 28 Instrument Approach Chart - ICAO

INSTRUMENT
APPROACH
CHART - ICAO AERODROME ELEV 170

APP	119.300	TWR	118.300
GND	121.900	ATIS	128.300

BIKF - KEFLAVIK
RNP RWY 28



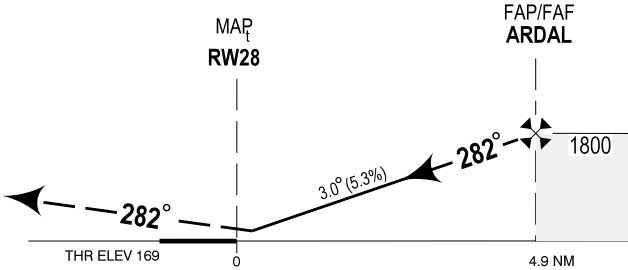
CHANGES: SDF REMOVED, BIR2/BIR3 RESTRICTED AREAS REMOVED

TRANSITION ALT 7000

MISSED APPROACH:
CLIMB ON COURSE 282° TO LERVA CLIMBING TO 3000.
EXPECT VECTORED BY KEFLAVIK APP.

RCF:
PASSING LERVA TURN RIGHT
DIRECT TOBSI AND HOLD AT 3000

RDH 50



OCA (H)	A	B	C	D	Remarks
LNAV/VNAV	430 (261)	440 (271)	450 (281)	460 (291)	
LNAV	550 (382)	550 (382)	550 (382)	550 (382)	
CIRCLING	600 (430)	670 (500)	870 (700)	940 (770)	

DIST to RW28	1	2	3	4
ALTITUDE	540	860	1190	1510

Timing not authorized for defining MAP

GS	kt	80	100	120	140	160	180
ARDAL-RW28 (4.9NM)	MIN:SEC	3:40	2:56	2:27	2:06	1:50	1:38
Rate of descent (5.3%)	ft/MIN	430	540	650	750	860	970

BIKF RNP RWY28
Recommended Coding Table

Serial Number	Path Descriptor	Waypoint Identifier	Fly-over	Course / Track °M(°T)	Magnetic Variation	Distance	Turn Direction	Altitude (ft)	Speed (kt/h)	VPA/TCH	Navigation Specification
010	IF	OLGES	-		+12.0			A3500+	-230		RNP APCH
020	TF	KFI28	-	352 (340.4)	+12.0	6.4	L	A2500+	-210		RNP APCH
010	IF	ADOVA	-		+12.0			A3500+	-230		RNP APCH
020	TF	KFI28	-	282 (270.6)	+12.0	6.4		A2500+	-210		RNP APCH
010	IF	LUKAR	-		+12.0			A3500+	-230		RNP APCH
020	TF	KFI28	-	212 (200.5)	+12.0	6.4	R	A2500+	-210		RNP APCH
030	TF	ARDAL	-	282 (270.3)	+12.0	4.4		A1800+		3.04°	RNP APCH
040	TF	RW28	Y	282 (270.2)	+12.0	4.9				3.04°/ 50.0	RNP APCH
050	CF	LERVA	-	282 (270.0)	+12.0	12.3		A3000			RNP APCH

Waypoint coordinates

Waypoint Identifier	Coordinates		Display	
	LAT	LON	LAT	LON
OLGES	635304.53N	0220938.15W	N 6353.08	W 02209.64
ADOVA	635901.39N	0220000.20W	N 6359.02	W 02200.00
LUKAR	640502.15N	0220925.75W	N6405.04	W02209.43
KFI28	635904.39N	0221429.61W	N6359.07	W02214.49
ARDAL	635905.61N	0222425.57W	N6359.09	W02224.43
RW28	635906.15N	0223532.60W	N6359.10	W02235.54
LERVA	635903.77N	0230321.43W	N6359.07	W02303.36
TOBSI	642007.38N	0232550.71W	N6420.12	W02325.85