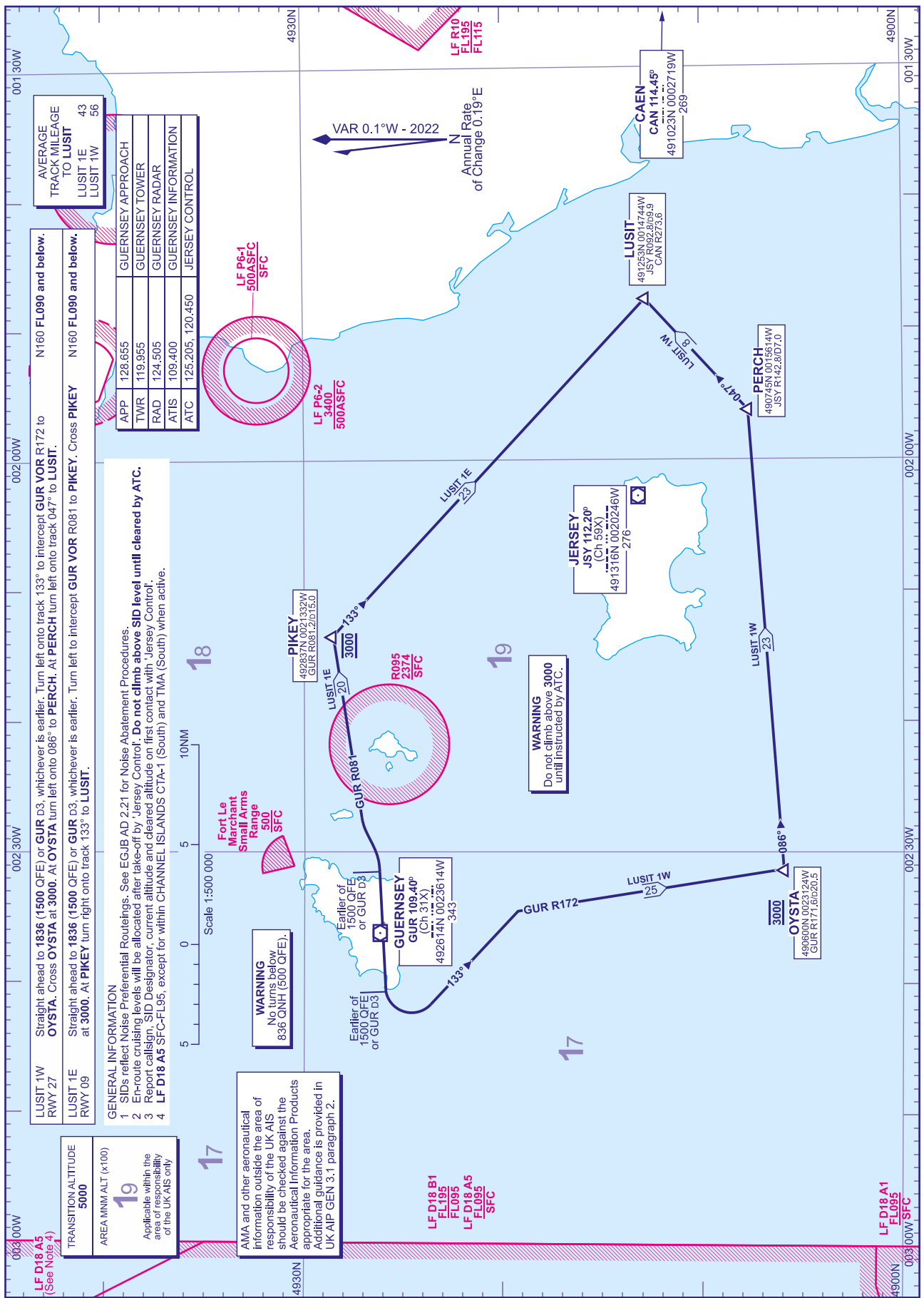


STANDARD DEPARTMENT CHART - INSTRUMENT (SID) - ICAO

DISTANCES IN NAUTICAL MILES
BEARINGS, TRACKS AND RADIALS ARE MAGNETIC
ALTITUDES AND ELEVATIONS ARE IN FEET

**GUERNSEY
LUSIT 1W 1E**



AVERAGE TRACK MILEAGE TO LUSIT
LUSIT 1E 43
LUSIT 1W 56

N160 FL090 and below.
Straight ahead to 1836 (1500 QFE) or GUR D3, whichever is earlier. Turn left onto track 133° to intercept GUR VOR R172 to OYSTA. Cross OYSTA at 3000. At OYSTA turn left onto 086° to PERCH. At PERCH turn left onto track 047° to LUSIT.

N160 FL090 and below.
Straight ahead to 1836 (1500 QFE) or GUR D3, whichever is earlier. Turn left to intercept GUR VOR R081 to PIKEY. Cross PIKEY at 3000. At PIKEY turn right onto track 133° to LUSIT.

APP	128.655	GUERNSEY APPROACH
TWR	119.955	GUERNSEY TOWER
RAD	124.505	GUERNSEY RADAR
ATIS	109.400	GUERNSEY INFORMATION
ATC	125.205, 120.450	JERSEY CONTROL

GENERAL INFORMATION
SIDs reflect Noise Preferential Routings. See EJOB AD 2.21 for Noise Abatement Procedures.
1 En-route cruising levels will be allocated after take-off by 'Jersey Control'. Do not climb above SID level until cleared by ATC.
2 Report call sign, SID Designator, current altitude and cleared altitude on first contact with 'Jersey Control'.
3 Report call sign, SID Designator, current altitude and cleared altitude on first contact with 'Jersey Control'.
4 LF D18 A5 SFC-FL95, except for within CHANNEL ISLANDS CTA-1 (South) and TMA (South) when active.

WARNING
No turns below 836 QNH (500 QFE).

WARNING
Do not climb above 3000 until instructed by ATC.

AMA and other aeronautical information outside the area of responsibility of the UK AIS should be checked against the Aeronautical Information Products appropriate for the area. Additional guidance is provided in UK AIP GEN 3.1 paragraph 2.

TRANSITION ALTITUDE
5000

AREA MNM ALT (x100)
19

Applicable within the area of responsibility of the UK AIS only

CHANGE (8/24): SPECIFICATION CHANGE.

AERO INFO DATE 21 MAY 24

AD 2-EJOB-6-4