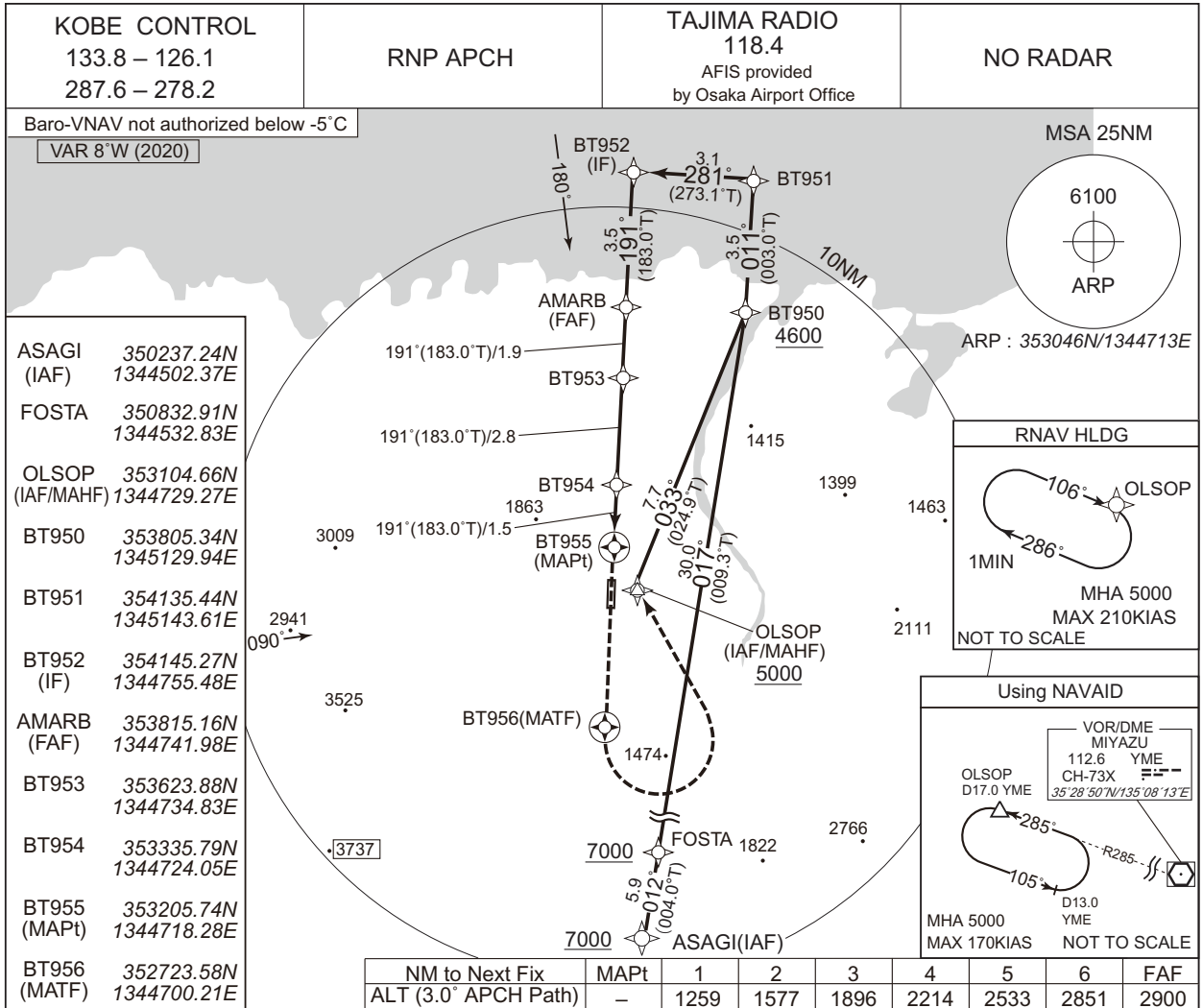


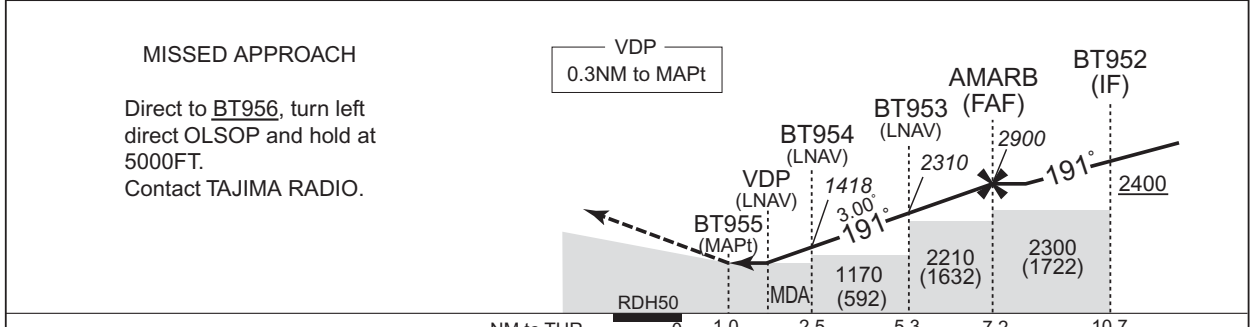
INSTRUMENT APPROACH CHART

RJBT / TAJIMA

RNP RWY19



CHANGE : FREQ for KOBE CONTROL.



Missed APCH climb gradient MNM 5.0%

MINIMA		THR elev. 573		AD elev. 578		
CAT	LNAV/VNAV		LNAV		CIRCLING	
	DA(H)	CMV	MDA(H)	CMV	MDA(H)	VIS
A	1000 (427)	1500	1000 (422)	1500	1020 (442)	1600
B					1030 (452)	
C	-	-	-	-	-	-
D	-	-	-	-	-	-

MINIMA with Missed APCH climb gradient of 2.5% are not established.  
 Circling to EAST side of RWY only.

**INTENTIONALLY LEFT BLANK**