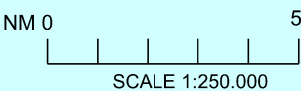


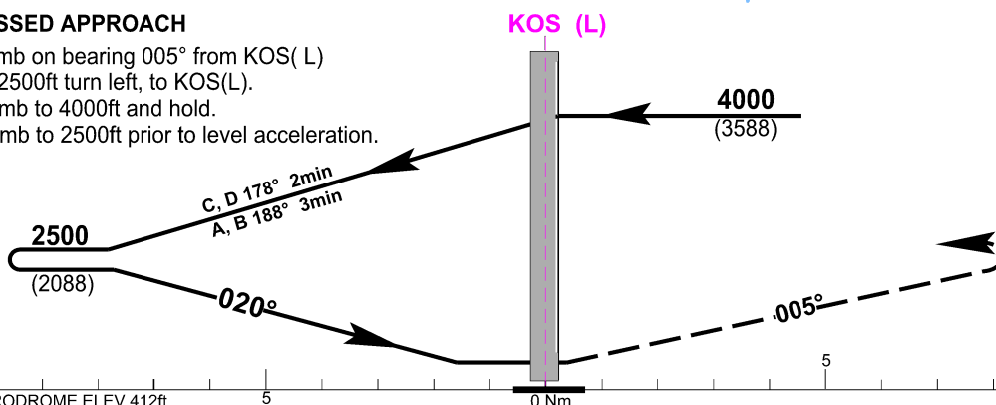
SPOT ELEVATIONS ARE IN FEET
LEVELS INDICATE ALTITUDE AND ARE IN FEET
BEARINGS, TRACKS AND RADIALS ARE MAGNETIC
DISTANCES ARE IN NM
VAR 5°E/2025-Annual Change 5'30"E



Change: ATIS frequency, OCH

MISSED APPROACH

Climb on bearing 005° from KOS (L) to 2500ft turn left, to KOS(L).
Climb to 4000ft and hold.
Climb to 2500ft prior to level acceleration.



AERODROME ELEV 412ft

nm to/from (L)

OCA/H	A	B	C	D
Straight in	Not Authorized			
Circling West of RWY	1200 (790)			