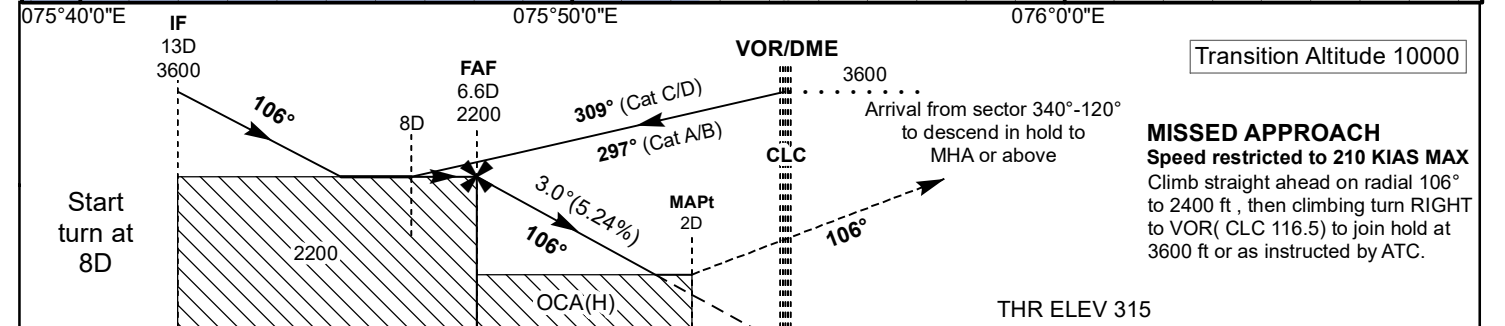
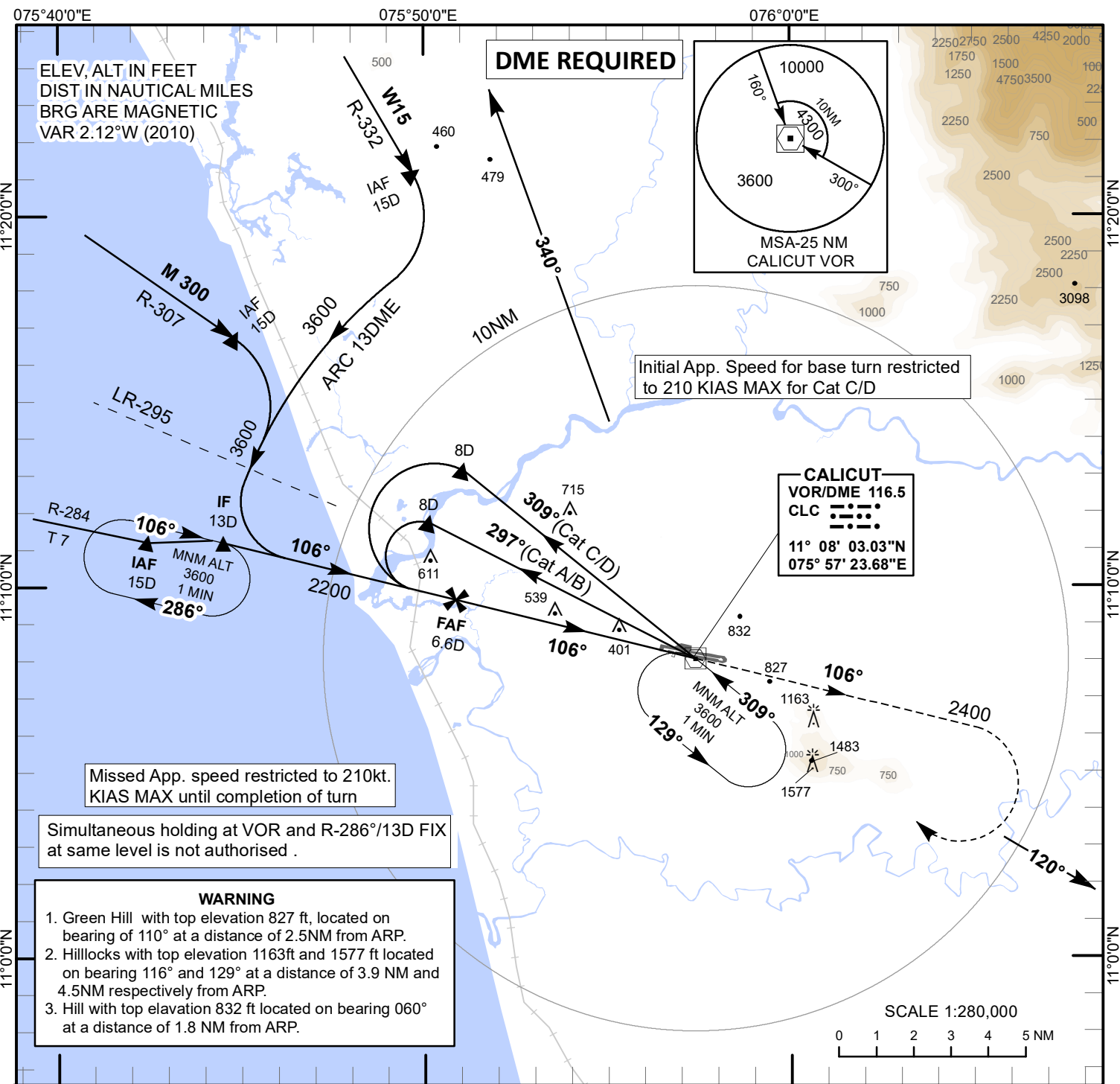


**INSTRUMENT APPROACH CHART**

**AERODROME ELEV 343 ft**  
HEIGHT RELATED TO  
THR RWY 10 - ELEV 315 ft

**APP 122.950/119.150**  
**TWR 123.350**

**CALICUT (VOCL)**  
INDIA  
**VOR RWY 10**



OCA(H)		Distance/Altitude information						
A/B	C/D	Distance (CLC-DME) NM	6.6D (FAF)	6D	5D	4D	3D	
980(665)	980(665)	Altitude Ft	2200	2010	1690	1370	1060	
STRAIGHT-IN		Rate of Descent/Ground speed information						
MACG 2.5%	980(665)	Ground Speed Kt	80	100	120	140	160	180
MACG 3.5%	800(485)	Rate of Descent (5.24%) Ft/MIN	425	530	635	745	850	955